

# IP Remote Controller

Setting software RM-IP10 Setup Tool guide  
Software Version 1.1.0

# Table of Contents

<b>Introduction .....</b>	<b>3</b>
<b>Preparing your PC .....</b>	<b>3</b>
<b>Setting the Camera and IP Remote Controller .....</b>	<b>3</b>
Setting the camera .....	4
Setting the IP remote controller .....	5
<b>Setting the Camera Table .....</b>	<b>7</b>
<b>Other Operations.....</b>	<b>9</b>
Storing settings .....	9
Deleting the software .....	9
<b>Configuring Windows Firewall.....</b>	<b>9</b>
When using Windows 7 .....	9
When using Windows Vista .....	11

## NOTICE TO USERS

© 2012 Sony Corporation. All rights reserved. This manual or the software described herein, in whole or in part, may not be reproduced, translated or reduced to any machine readable form without prior written approval from Sony Corporation.

SONY CORPORATION PROVIDES NO WARRANTY WITH REGARD TO THIS MANUAL, THE SOFTWARE OR OTHER INFORMATION CONTAINED HEREIN AND HEREBY EXPRESSLY DISCLAIMS ANY IMPLIED WARRANTIES OF MERCHANTABILITY OR FITNESS FOR ANY PARTICULAR PURPOSE WITH REGARD TO THIS MANUAL, THE SOFTWARE OR SUCH OTHER INFORMATION. IN NO EVENT SHALL SONY CORPORATION BE LIABLE FOR ANY INCIDENTAL, CONSEQUENTIAL OR SPECIAL DAMAGES, WHETHER BASED ON TORT, CONTRACT, OR OTHERWISE, ARISING OUT OF OR IN CONNECTION WITH THIS MANUAL, THE SOFTWARE OR OTHER INFORMATION CONTAINED HEREIN OR THE USE THEREOF.

Sony Corporation reserves the right to make any modification to this manual or the information contained herein at any time without notice. The software described herein may also be governed by the terms of a separate user license agreement.

- Microsoft and Windows are registered trademarks of Microsoft Corporation in the United States and/or other countries.

All other company and product names are trademarks or registered trademarks of the respective companies or their respective makers.

---

## Introduction

This instruction manual is for the setting software RM-IP10 Setup Tool, which sets up the IP remote controller and camera connected with IP connection.

Before setting, connect the IP remote controller and camera correctly by following the operating instructions of the IP remote controller and the operation guide for optional IP control.

---

## Preparing your PC

RM-IP10 Setup Tool allows you to set up an IP remote controller and camera, from a PC that is connected to the same network using IP connection. Before setting, prepare the following.

- 1** Connect the PC to the network.  
For details, refer to “Connections” in the operating instructions of the IP remote controller.
- 2** Perform the PC network setting.  
Set the PC to the same network that is used by the IP connection.
- 3** Insert the CD-ROM in your CD-ROM drive, then open the index.html file on the CD-ROM.  
This file may open automatically when you insert the CD-ROM.
- 4** Click the **RM-IP10SetupTool** icon.  
Copy **RM-IPSetupTool.exe** to any folder on the PC by following the instructions on the screen.

### Note

When you set the remote controller or camera that is connected to a different segment, connect the PC to that segment.

---

## Setting the Camera and IP Remote Controller

You need to assign a name and IP address to the camera and IP remote controller to operate the camera from the IP remote controller.

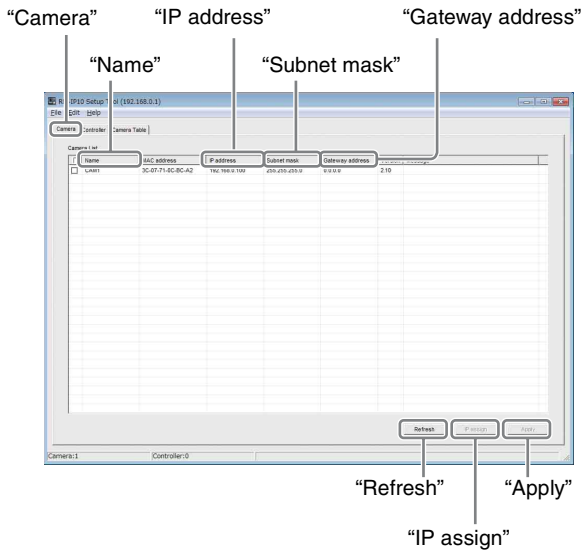
When making an IP connection for the first time, or adding a camera or IP remote controller, perform this setting.

### Notes

- RM-IP10 Setup Tool may not operate correctly if you use a personal firewall or antivirus software in your computer. In this case, disable the software.
- If you are using Windows XP Service Pack 2 or later, Windows Vista or Windows 7, disable the Windows Firewall function. Otherwise RM-IP10 Setup Tool will not operate correctly. For the setting, see “Configuring Windows Firewall” in “When using Windows Vista” on page 11 or “Configuring Windows Firewall” in “When using Windows 7” on page 9.

## Setting the camera

- 1 Turn on the IP remote controller, camera, and other devices that are connected with IP connection.
- 2 Start RM-IP10 Setup Tool and click the “Camera” tab.  
The “Camera List” screen appears and cameras that are detected on the IP network are listed on the screen.



“Mac address” is a unique address for the camera and cannot be changed.

### Tips

- If the number of cameras listed on the screen differs from the actual number of cameras physically connected, click “Refresh” to update the screen.
- The Mac address of the camera is printed on the panel of the IP control card BRBK-IP10 or BRBK-IP7Z.

### Notes

- If the number of cameras listed on the screen differs from the actual number of cameras physically connected, check the camera connection by referring to the operating instructions of the IP remote controller.
- The message “User Account Control - An unidentified program wants access to your computer” may appear. In this case, click “Allow.”
- A camera that is connected to a different segment cannot be detected.
- To set a camera that is connected to a different segment, connect the PC to that segment.

- 3 Set the camera name.  
Input the camera name to the “Name” column. The camera name is used when setting the camera table. Setting a name that is easy to understand is convenient when specifying the camera in other operations.

### Tip

You can use any of the following characters (up to 8 characters) in the camera name.

Space, ! # \$ % & ' ( ) \* + - . / 0 1 2 3 4 5 6 7 8 9 ; < = > ? @ A B C D E F G H I J K L M N O P Q R S T U V W X Y Z [ \ ] ^ \_ ` a b c d e f g h i j k l m n o p q r s t u v w x y z { | }

- 4 Set the IP address.
  - Input the IP address to the “IP Address” column.
  - Input the subnet mask to the “Subnet mask” column.
  - Input the default gateway address to the “Gateway address” column.

### Notes

- When you input or change a name or IP address, etc., the checkbox for that camera will be marked. The name and IP address of each camera with its checkbox marked, will be registered to that camera when you click “Apply” in Step 5. Be aware that if you perform the “Auto IP assign” function before clicking “Apply,” any settings you have input will be replaced.
- The “Subnet mask” and “Gateway address” are input only for the BRBK-IP10/IP7Z with the firmware version 2.1 or higher.

- 5 After setting, click “Apply.”  
The setting of each camera with its checkbox marked, is registered to that camera.
- 6 Click “Refresh.”  
An updated list of the current settings registered, is displayed.

### Note

The camera will reboot after clicking “Apply.” Do not click “Apply” until the camera reboots and outputs an image. Click “Refresh” about 10 seconds after clicking “Apply.”

### Tip

If you use multiple cameras and have difficulty in finding the desired camera on the list, try the following.

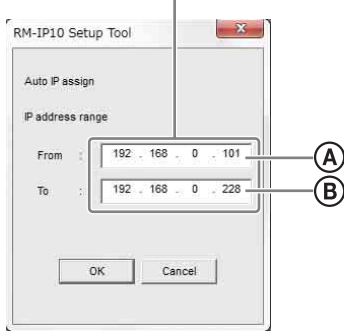
- 1 Turn on the desired camera only.

- 2 Click “Refresh” on the “Camera List” screen.  
Only the camera that is turned on appears on the list.
- 3 Perform the camera setting.
- 4 Repeat Steps 1 to 3 for setting other cameras.

### To assign IP addresses automatically

If you want to assign IP addresses to multiple cameras at the same time, you can assign them automatically. Mark the checkbox of the cameras to be assigned IP addresses automatically, then click “IP assign.” Input the range of the IP addresses on the “Auto IP assign” screen, then click “OK.”

Input the IP addresses.



IP addresses in the range you specify (A) to (B) are assigned to the cameras whose checkboxes are marked. Then click “Apply” to register the setting. To cancel the setting, click “Cancel.”

#### Note

If the number of cameras exceeds the number of IP addresses you have specified, some cameras will not be assigned an IP address. In this case, click “Apply” and mark the checkbox for each camera that has no IP address assigned, then perform the “Auto IP assign” function again.

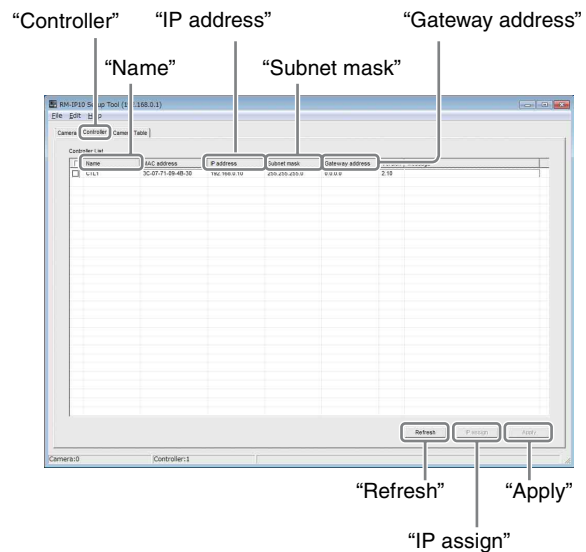
## Setting the IP remote controller

- 1 Turn on the IP remote controller, camera, and other devices that are connected with IP connection.

#### Note

To update settings of the IP remote controller RM-IP10, set DIP 2 switch 8 on the bottom of the unit to ON (setting update mode) before turning the unit on. For details, refer to the operating instructions of the IP remote controller.

- 2 Start RM-IP10 Setup Tool and click the “Controller” tab.  
The “Controller List” screen appears and IP remote controllers that are detected on the IP network are listed on the screen.



“Mac address” is a unique address for the IP remote controller and cannot be changed.

#### Tips

- If the number of IP remote controllers listed on the screen differs from the actual number of IP remote controllers physically connected, click “Refresh” to update the screen.
- The Mac address of the IP remote controller is printed on the bottom of the IP remote controller.

#### Notes

- If the number of IP remote controllers listed on the screen differs from the actual number of IP remote controllers physically connected, check the connection by referring to the operating instructions of the IP remote controller.
- The message “User Account Control - An unidentified program wants access to your”

computer” may appear. In this case, click “Allow”.

- An IP remote controller that is connected to a different segment cannot be detected.
- To set an IP remote controller that is connected to a different segment, connect the PC to that segment.

- 3** Set the IP remote controller name.  
Input the IP remote controller name to the “Name” column.  
The IP remote controller name is used when setting the camera table. Setting a name that is easy to understand is convenient when specifying the IP remote controller in other operations.

#### Tip

You can use any of the following characters (up to 8 characters) in the IP remote controller name.

Space, ! # \$ % & ' ( ) \* + - . / 0 1 2 3 4 5 6 7 8 9 ; < = > ? @ A B C D E F G H I J K L M N O P Q R S T U V W X Y Z [ \ ] ^ \_ ` a b c d e f g h i j k l m n o p q r s t u v w x y z { | }

- 4** Set the IP address.
- Input the IP address to the “IP Address” column.
  - Input the subnet mask to the “Subnet mask” column.
  - Input the default gateway address to the “Gateway address” column.

#### Notes

- When you input or change a name or IP address, etc., the checkbox for that IP remote controller will be marked. The name and IP address of each IP remote controller with its checkbox marked, will be registered to that IP remote controller when you click “Apply” in Step 5. Be aware that if you perform the “Auto IP assign” function before clicking “Apply,” any settings you have input will be replaced.
- The “Subnet mask” and “Gateway address” are input only for the RM-IP10 with the firmware version 2.1 or higher.

- 5** After setting, click “Apply.”  
The setting of each IP remote controller with its checkbox marked, is registered to that IP remote controller.

- 6** Click “Refresh.”  
An updated list of the current settings registered, is displayed.

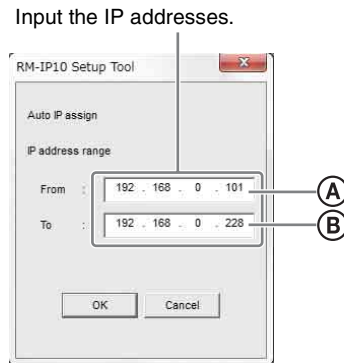
#### Note

The IP remote controller will reboot after clicking “Apply.”  
Click “Refresh” about 10 seconds after clicking “Apply.”

### To assign IP addresses automatically

If you want to assign IP addresses to multiple IP remote controllers at the same time, you can assign them automatically.

Mark the checkbox of the IP remote controllers to be assigned IP addresses automatically, then click “IP assign.” Input the range of the IP addresses on the “Auto IP assign” screen, then click “OK.”



IP addresses in the range you specify (A) to (B) are assigned to the IP remote controllers whose checkboxes are marked. Then click “Apply” to register the setting. To cancel the setting, click “Cancel.”

#### Note

If the number of IP remote controllers exceeds the number of IP addresses you have specified, some IP remote controllers will not be assigned an IP address. In this case, click “Apply” and mark the checkbox for each IP remote controller that has no IP address assigned, then perform the “Auto IP assign” function again.

# Setting the Camera Table

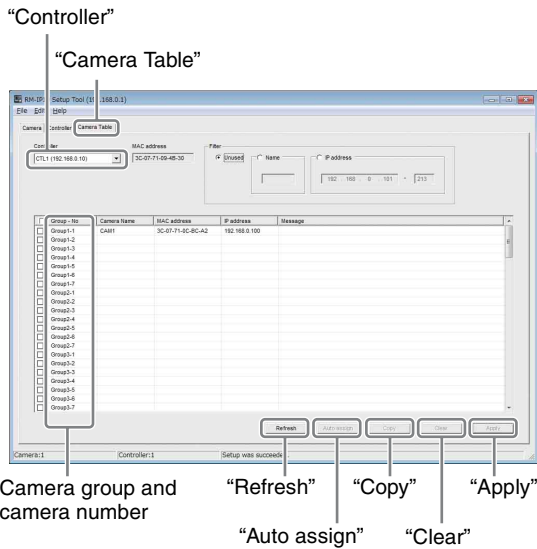
To operate a camera from an IP remote controller, specify the camera that you want to operate by selecting the camera group number, then select the camera number on the IP remote controller. This section explains how to set the camera table by assigning cameras to a camera group and camera number. There are 16 groups and each group consists of seven cameras. A camera table is set for each IP remote controller.

- 1 Turn on the IP remote controller, camera, and other devices that are connected with IP connection.

**Note**

To update settings of the IP remote controller RM-IP10, set DIP 2 switch 8 on the bottom of the unit to ON (setting update mode) before turning the unit on. For details, refer to the operating instructions of the IP remote controller.

- 2 Start RM-IP10 Setup Tool and click the “Camera Table” tab. The “Camera Table” screen appears.



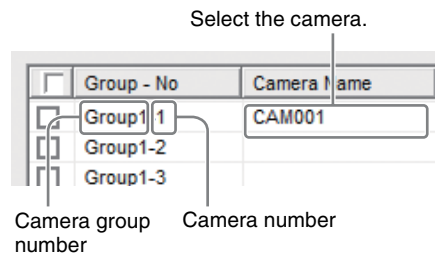
- 3 Select the IP remote controller. In the box under “Controller,” scroll down the list of names that were set in “Setting the IP remote controller” (page 5). Select the IP remote controller you want for the camera table.

**Notes**

- An IP remote controller that is connected to a different segment cannot be selected.
- To set an IP remote controller that is connected to a different segment, connect the PC to that segment.
- If the name of the IP remote controller is not displayed correctly, click the “Controller” tab to update the “Controller List” screen.

- 4 Assign a camera to the camera group and camera number.

The camera names that are set on “Setting the camera” (page 4) are listed by clicking the box to the right of the camera group and camera number. Select the camera that you want to assign.



Repeat this step to assign other cameras to the camera group and camera number.

**Notes**

- When you select a camera, the checkbox for camera group and camera number will be marked. The camera of each camera group and camera number with its checkbox marked, will be registered when you click “Apply” in Step 5. Be aware that if you perform the “Auto assign” function before clicking “Apply,” any selections you have made will be replaced.
- If the name of the camera is not displayed correctly, click the “Camera” tab to update the “Camera List” screen.

- 5 After setting, click “Apply.” The setting for each checkbox marked is registered.

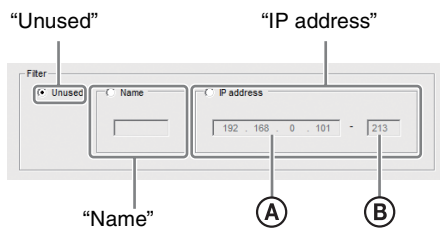
- 6 Click “Refresh.” An updated list of the current settings registered, is displayed.

**Note**

The IP remote controller will reboot after clicking “Apply.” Click “Refresh” about 10 seconds after clicking “Apply.”

## To list only specified cameras for camera selection

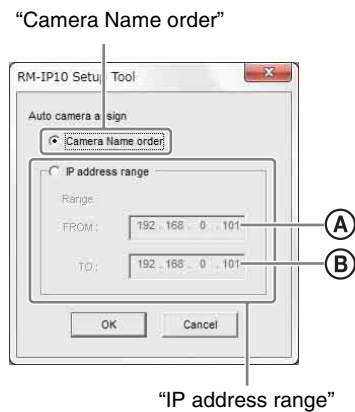
When using multiple cameras, you can list specified cameras only, to select from them more easily. Use the setting on the upper-right area of the screen.



- Only camera names that include the characters you input on “Name” will be listed when “Name” is marked.
- Only camera names that are within the range of the IP addresses you input on “IP address” (A) to (B) will be listed when “IP address” is marked.
- All the camera names will be listed when “Unused” is marked.

## To assign a camera to the camera group and camera number automatically

Click “Auto assign.”



- The camera group and camera numbers are assigned to all the cameras that are set on “Camera List,” when “Camera Name order” is marked.
- The camera group and camera numbers are assigned to the cameras that are specified on “IP address range” (A) to (B) when “IP address range” is marked.

Click “OK” to assign the camera group and camera numbers automatically. Then click “Apply” to register the setting.

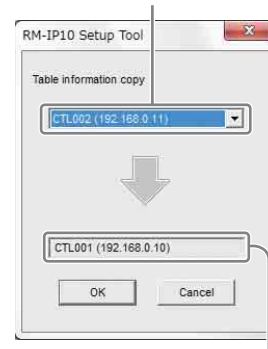
To cancel the setting, click “Cancel.”

## To copy the camera table from another IP remote controller

When setting multiple camera tables, you can set a camera table easily by copying one from another IP remote controller.

To copy, mark the checkbox on the left of the camera group and camera number that you want to copy from, then click “Copy.”

IP remote controller whose camera table is copied from.



IP remote controller that you want to copy camera table to.

Select the IP remote controller that has the camera table you want to copy, from the list in the upper box, then click “OK.”

The camera table is copied to the camera group and camera number with its checkbox marked. Then click “Apply” to register the setting. To cancel the copy, click “Cancel.”

### Tip

To assign the copied camera table to all camera groups and camera numbers, mark all checkboxes.

### Note

A camera table of an IP remote controller that is connected to a different segment cannot be copied. Use the “Export” and “Import” function on “Storing settings” (page 9).

## To delete from the camera table

Mark the checkbox of the camera group and camera number that you want to delete, then click “Clear.”

## To add a camera that is connected to a different segment to the camera table

Connect the PC and IP remote controller to the same segment as the desired camera temporarily, then perform the steps of “Setting the Camera Table” (page 7). The camera on the different segment is displayed in yellow on the camera table. Do not delete it.



---

# Other Operations

---

## Storing settings

You can store settings that are made on the “Camera List,” “Controller List,” and “Camera Table” screens, as a CSV file.

- 1 Display the desired screen (“Camera List,” “Controller List,” or “Camera Table”).
- 2 Select **Export** from the **File** menu on the menu bar.
- 3 Click **Save** to select the save destination.

### Tip

You can load the settings of “Camera Table.” Select the CSV file by selecting **Import** from the **File** menu on the menu bar. Mark the checkbox on the left of the desired camera, then click **Apply**.

### Note

You cannot load the settings of “Camera List” and “Controller List.”

---

## Deleting the software

Delete the RM-IP10 Setup Tool file from the folder specified when it was saved.

---

# Configuring Windows Firewall

---

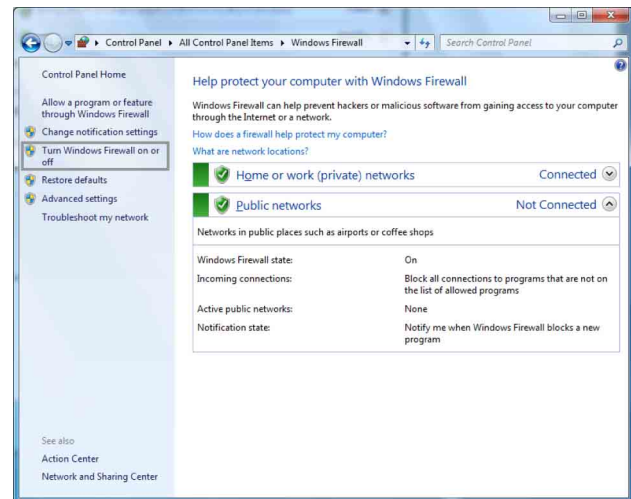
## When using Windows 7

### Configuring Windows Firewall

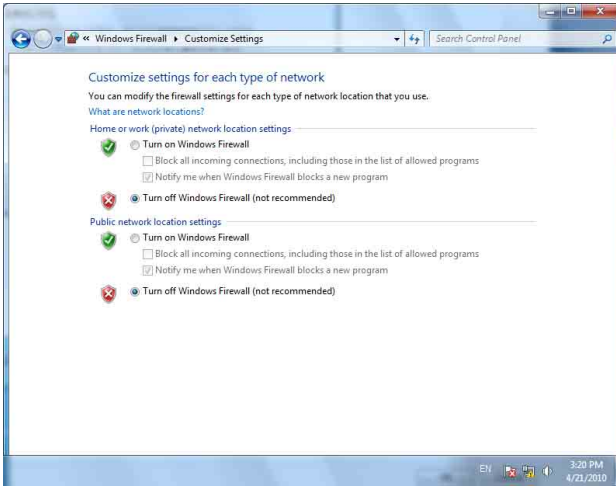
RM-IP10 Setup Tool may not operate correctly, depending on the configuration of Windows Firewall. (No cameras are shown in the list even if they are detected.) In this case, confirm the Windows Firewall configuration as follows:

#### To turn Windows Firewall off

- 1 Select **Control Panel** from the **Start** menu of Windows.
- 2 Click **Windows Firewall**.
- 3 Select **Turn Windows Firewall on or off**.



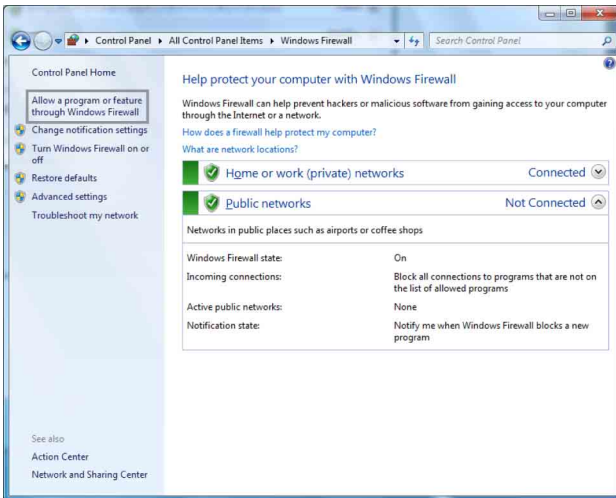
#### 4 Select **Disable Windows Firewall.**



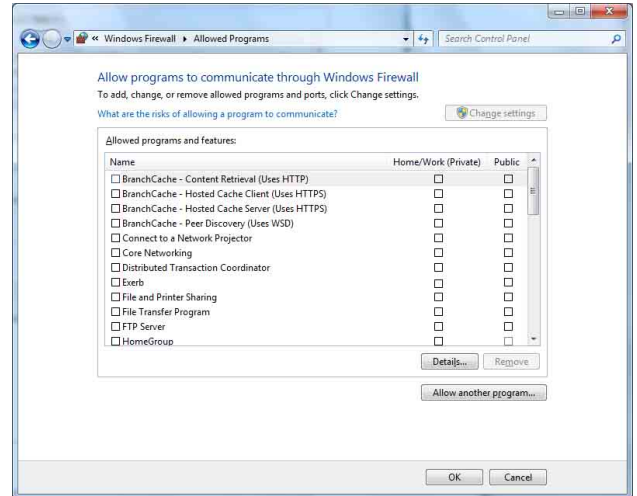
The cameras will be displayed in the list.

#### To turn **Windows Firewall on**

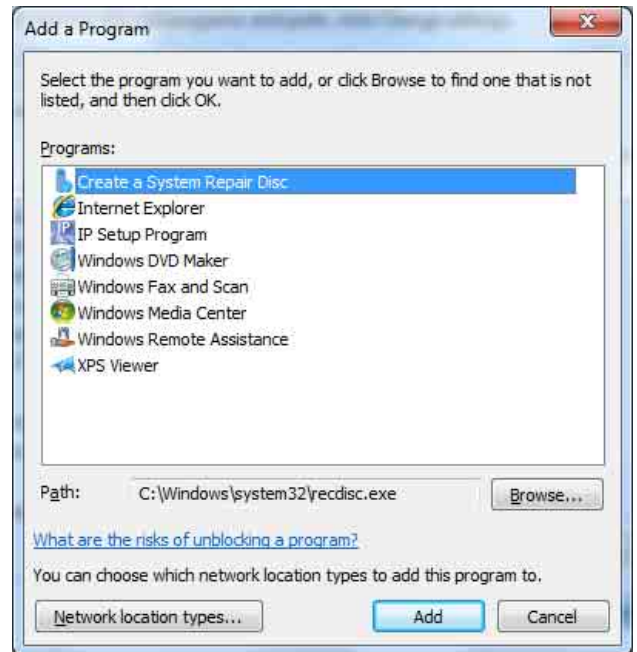
- 1 Select **Control Panel** from the **Start** menu of Windows.
- 2 Click **Windows Firewall.**
- 3 Select **Allow a program or feature through Windows Firewall.**



#### 4 Select **Allow another program...**



#### 5 Add program.



Click **Browse...** and input the path for **RM-IP10SetupTool**, then click **Add**.

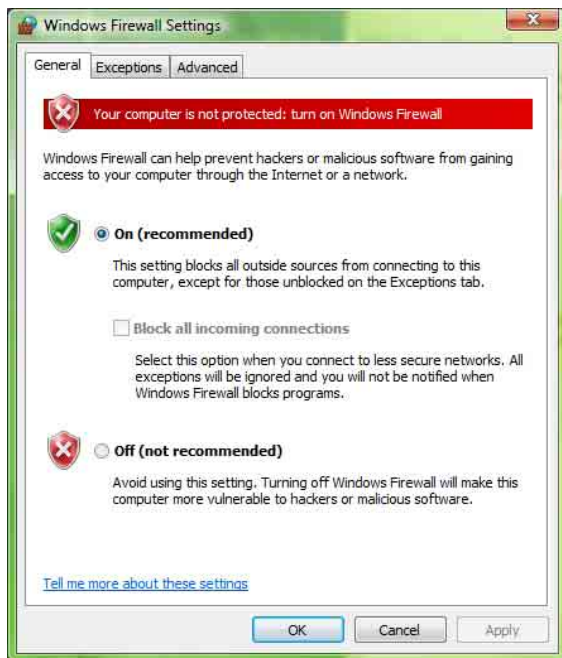
When the above procedure is completed, the IP remote controllers and cameras connected in the local network are displayed in **RM-IP10 Setup Tool**.

## When using Windows Vista

### Configuring Windows Firewall

RM-IP10 Setup Tool may not operate correctly, depending on the configuration of Windows Firewall. (No cameras are shown in the list even if they are detected.) In this case, confirm the Windows Firewall configuration as follows:

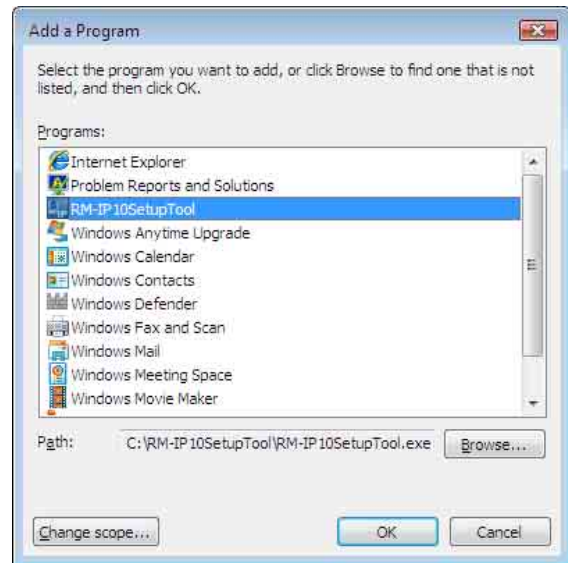
- 1 Select **Control Panel** from the **Start** menu of Windows.
- 2 Click **Windows Firewall**.
- 3 Select **Turn Windows Firewall on or off**. “User Account Control – Windows needs your permission to continue” may appear. In this case, click **Continue**.
- 4 Select **Off** in the **General** tab.



The cameras will be displayed in the list. If you want to keep Windows Firewall **On**, continue with the following steps.

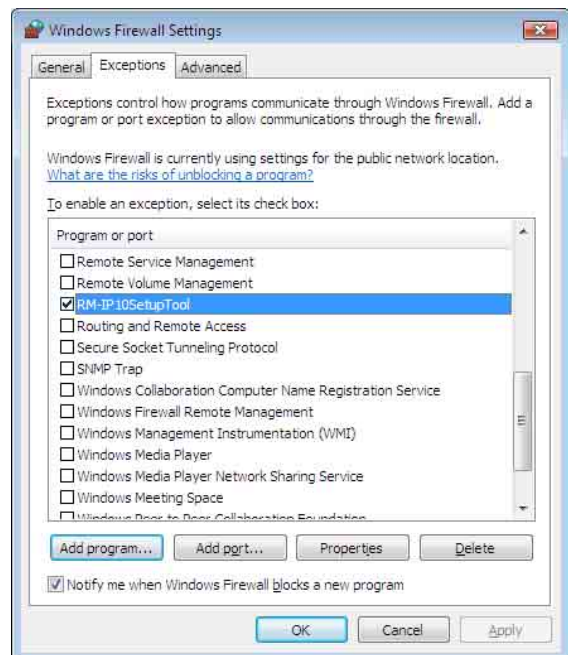
- 5 Select the **Exceptions** tab.
- 6 Click **Add Program....**

- 7 When the Add Program dialog appears, click **Browse...** and input the path for RM-IP10SetupTool, then click **OK**.



RM-IP10SetupTool is added to the Program or port list.

- 8 Click **OK**.



When the above procedure is completed, the IP remote controllers and cameras connected in the local network are displayed in RM-IP10 Setup Tool.

<http://www.sony.net/>

Sony Corporation