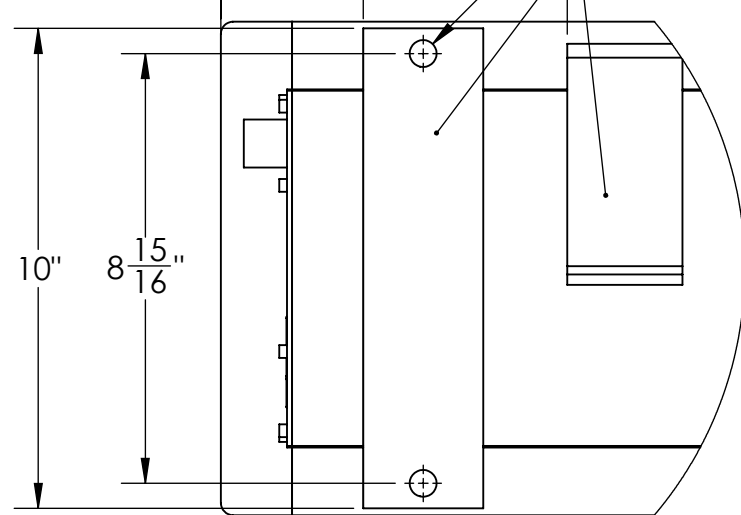
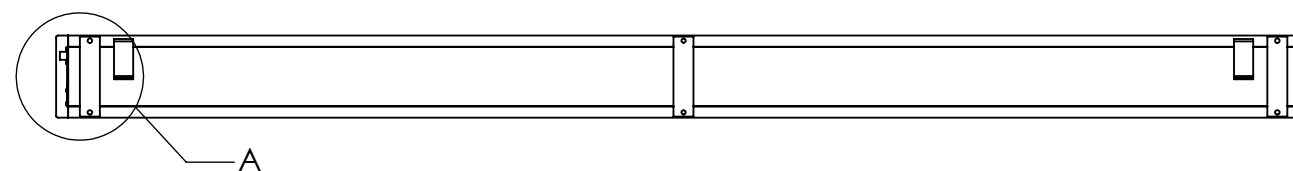


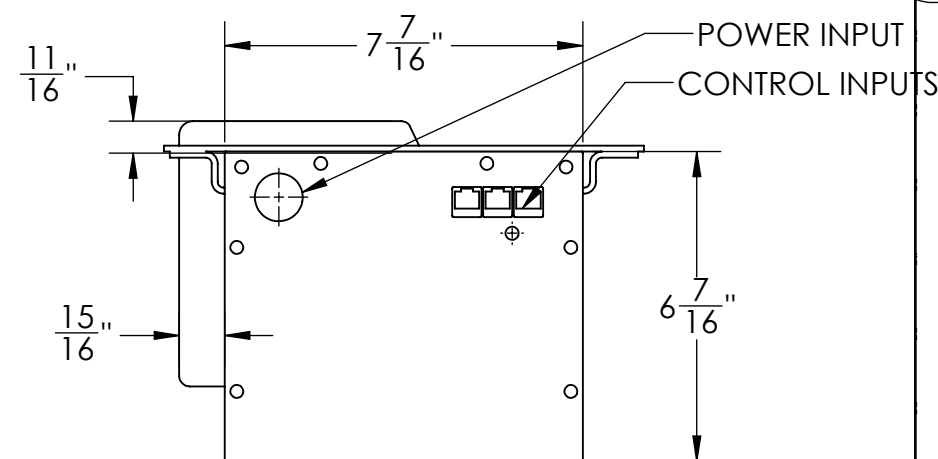
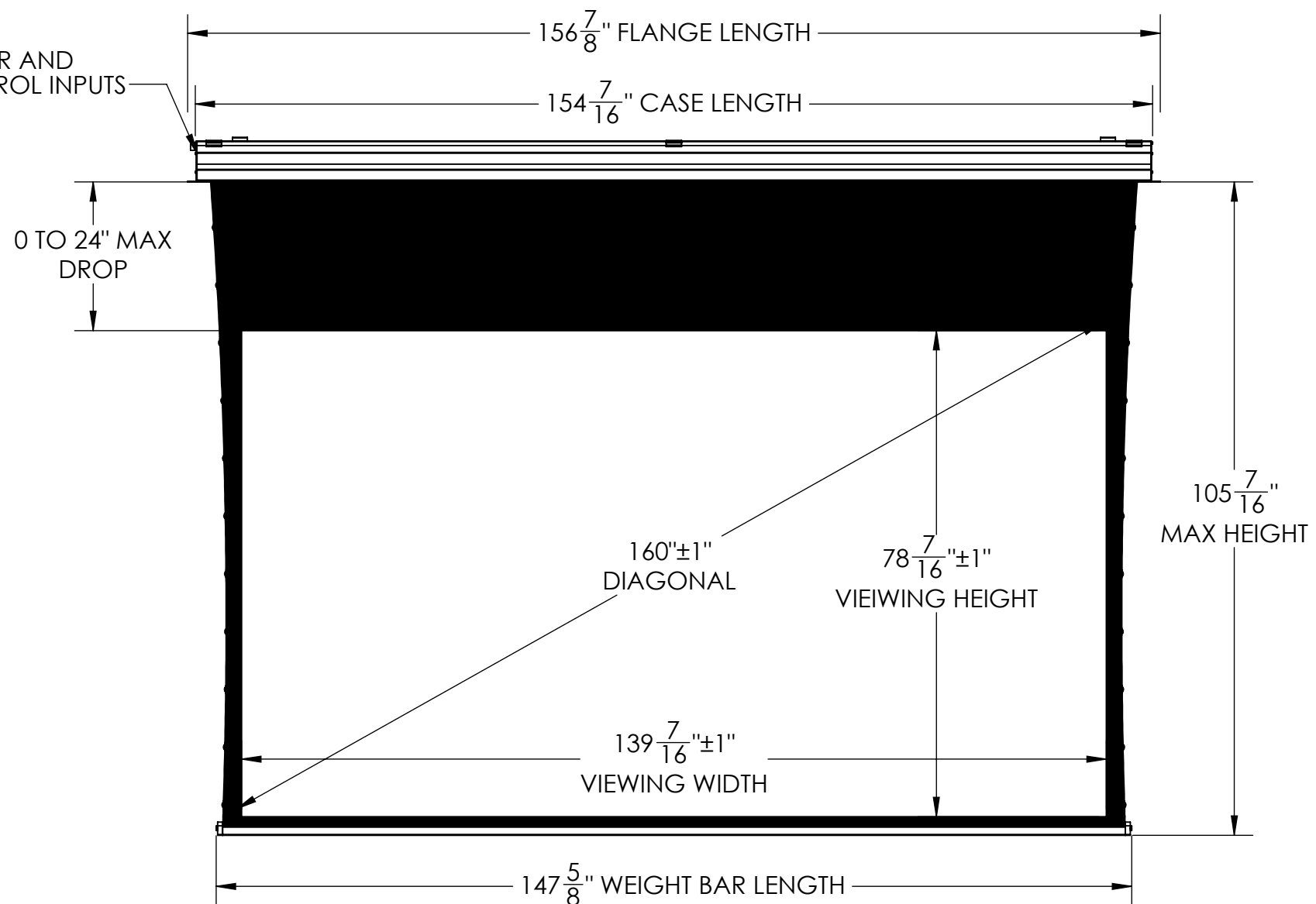
2" TO 18"
 2" TO 18"
 2x $\phi \frac{9}{16}$ "
 SUSPENDED CEILING BRACKET OPTION
 WALL MOUNT OPTION



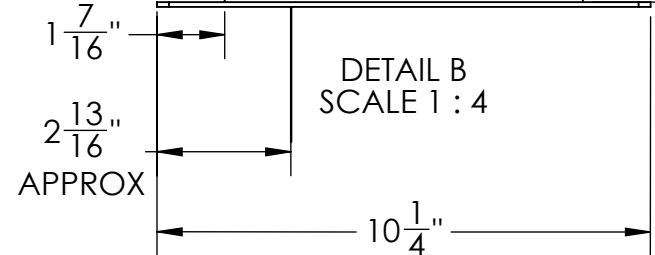
DETAIL A
 SCALE 1 : 4



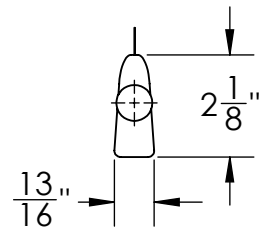
POWER AND
 CONTROL INPUTS



DETAIL B
 SCALE 1 : 4



DETAIL C
 SCALE 1 : 4



DESCRIPTION:
 160" Diagonal 16:9 Aspect Ratio 24" Max Drop
 Motorized Flush Mount Projection Screen
 SCREEN TYPE: 5&3 SERIES MOTORIZED FLUSH
 MODEL #: 5TMFL160 Max Drop 24

APPROXIMATE SHIPPING DIMS AND WEIGHTS				APPROXIMATE PRODUCT WEIGHT	DIMENSIONS IN INCHES UNLESS OTHERWISE SPECIFIED ALL DIMS ± 1/4"	SCALE:	SIZE	DRAWN BY	CREATED
LENGTH	HEIGHT	WIDTH	WEIGHT	160 LBS	160" DIAGONAL	1:24	B	JGP	6/23/2018
170"	13"	13"	192 LBS						