



MKE 600



- | | |
|-----------------------------|--------------------|
| Quick Guide | Kort vejledning |
| Kurzanleitung | Pikaohje |
| Guide de démarrage rapide | Σύντομες οδηγίες |
| Guida rapida | Kısa Kılavuz |
| Instrucciones resumidas | Краткая инструкция |
| Instruções resumidas | 快速指南 |
| Beknopte gebruiksaanwijzing | 快速使用指南 |
| Krótká instrukcja obsługi | クイックガイド |
| Snabbguide | 요약 안내서 |

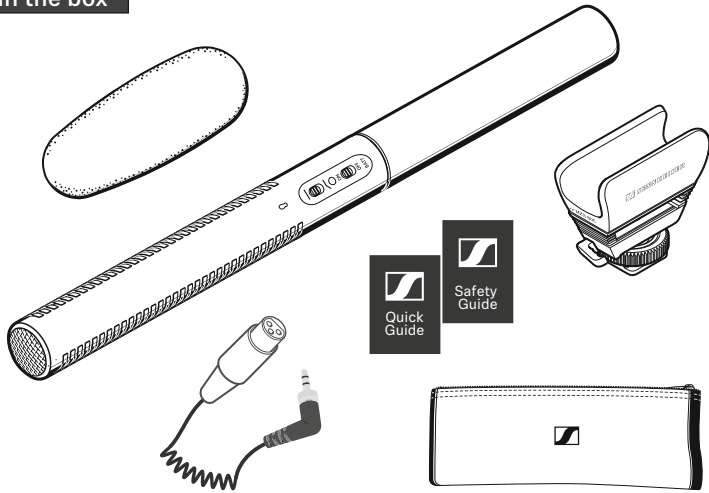
Sennheiser electronic GmbH & Co. KG

Am Labor 1, 30900 Wedemark, Germany
www.sennheiser.com

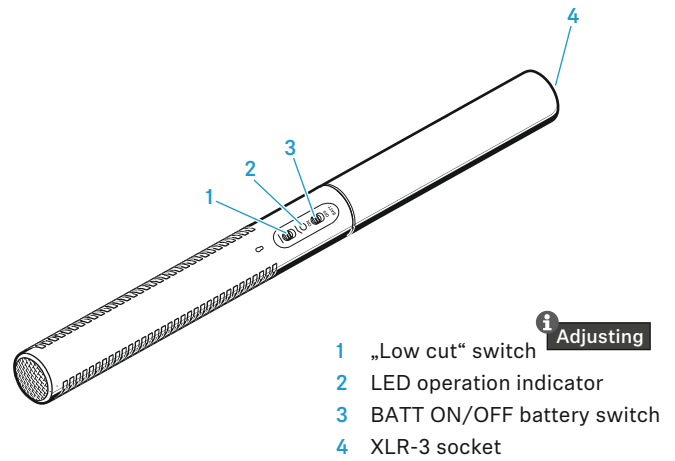
Printed in Germany
Publ. 05/21, 587477/A01

SENNHEISER

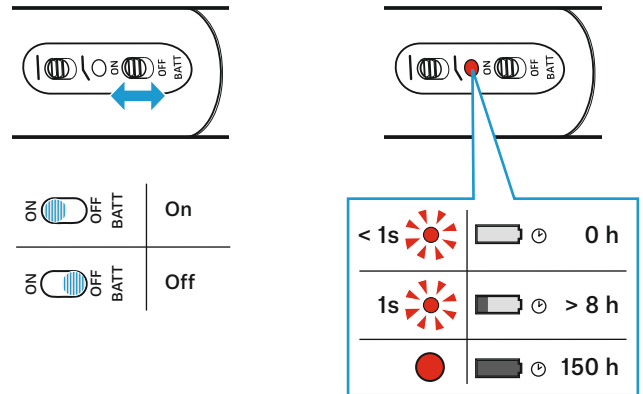
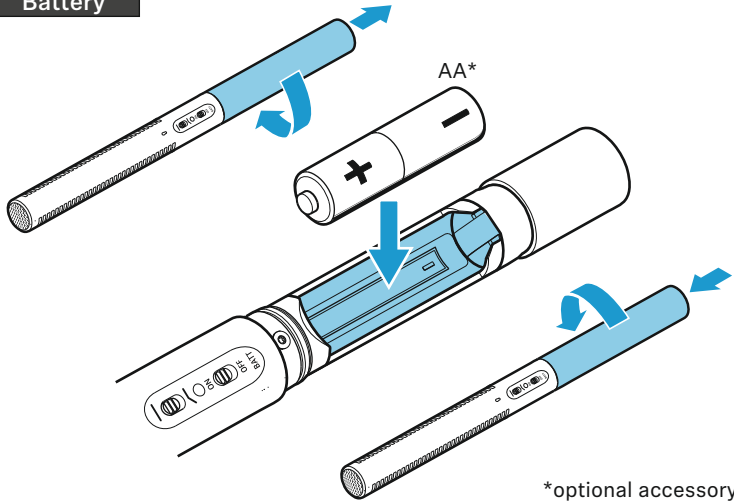
In the box



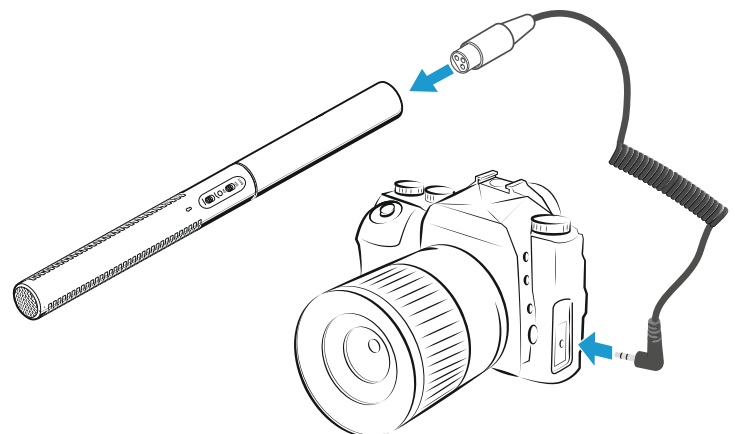
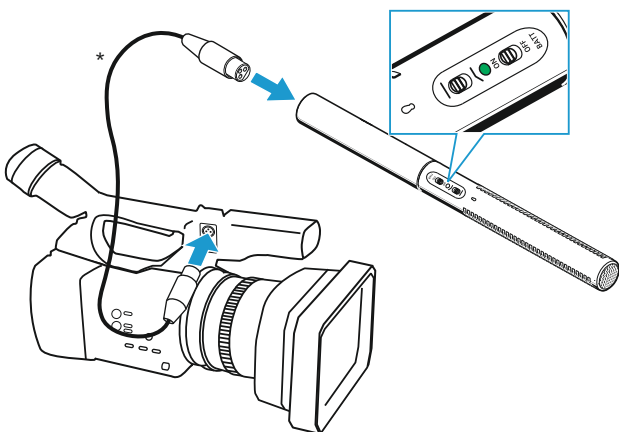
Overview



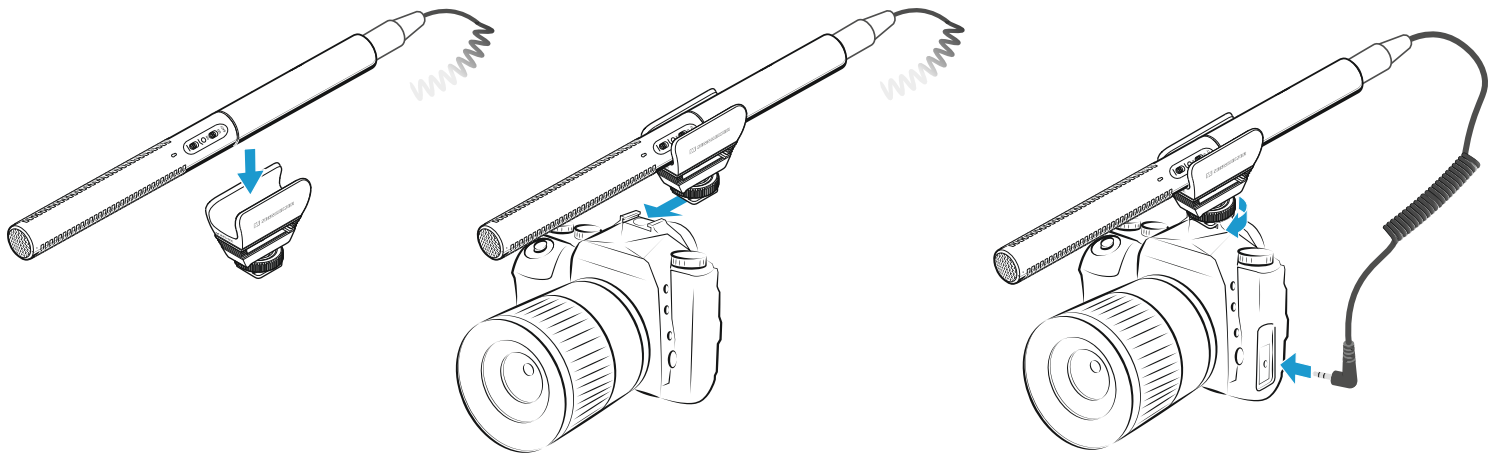
Battery



Phantom powering

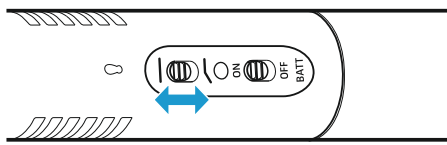


Setup



Adjusting

low-cut

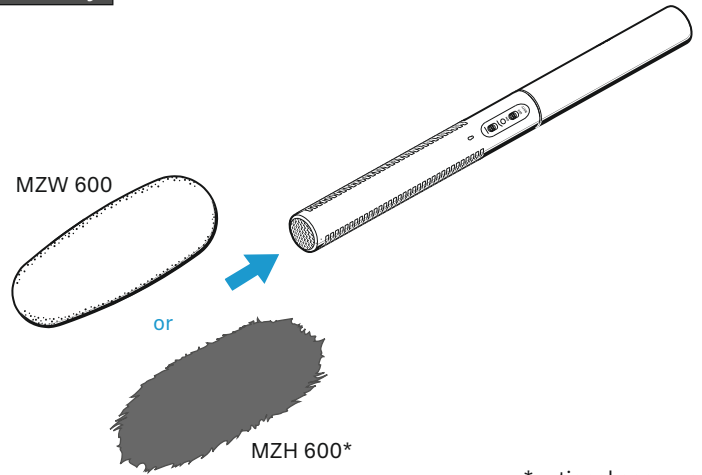


Off



On: frequencies below 100 Hz are attenuated to reduce wind and impact noise

Accessory

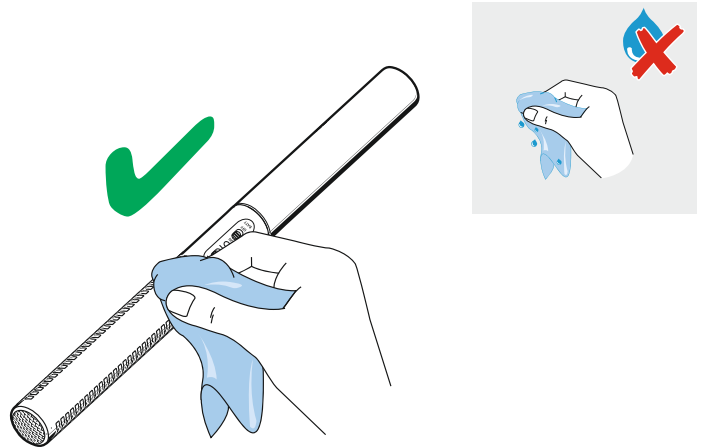


*optional accessory

Specifications

Pick-up pattern	super-cardioid/lobar
Frequency response	40 – 20,000 Hz
Sensitivity	with P48 powering: 21 mV/Pa with battery powering: 19 mV/Pa
Max. SPL	with P48 powering: 132 dB SPL with battery powering: 126 dB SPL
Equivalent noise level A-weighted	with P48 powering: 15 dB (A) with battery powering: 16 dB (A)
Power supply	48 V ± 4 V (P48, IEC 61938) via XLR-3 or battery/rechargeable battery (AA size, 1.5 V/1.2 V)
Current consumption	with P48 powering: 4.4 mA
Operating time with battery	approx. 150 h
„Low Batt“ indicator	< 1.05 V; approx. 8 h of remaining operating time after initial display
Temperature range	Operation: -10 °C to +60 °C
Dimension	∅ 20 mm x 256 mm
Weight	128 g (without battery)

Cleaning



Polar pattern and frequency response

