

- Before using this unit, carefully read "USING THE UNIT SAFELY" and "IMPORTANT NOTES" (the leaflet "USING THE UNIT SAFELY" and the Startup Guide). After reading, keep the document(s) where it will be available for immediate reference.
- Before using the unit, ensure that its system program is at the most recent version. For information on available upgrades for the system program, see the Roland website (<https://proav.roland.com/>). You can check the system program version by Pressing the [MENU] button → "SYSTEM" → "VERSION".

Look What You Can Do

- **Input mixed video and audio to your computer, easily creating video streaming content like a pro.**
- **Use effects such as voice changer, or add jingles and applause to make your stream or program more entertaining.**
- **Make operation easier by automatically switching the video in time with the beat of the music, the voices of the performers, or a specified interval (Auto Switching function).**
- **Use a single button to switch to a desired screen layout as your event or program progresses (Scene function).**
- **Input video from a computer or smartphone to easily stream games or other live content.**

PDF Manual (download from the Web)

For details on operation and a list of menus, refer to "Reference Manual" (PDF).

Downloading

1. Access the Roland website.
<https://proav.roland.com/>
2. Move to the product page → click "Support" → download the applicable PDF file.



Checking the Included Items

Check that all of the included items are present. If any of the included items are missing, contact your dealer.

- VR-1HD unit
- AC adaptor
- Power cord
- Startup Guide
- Leaflet "USING THE UNIT SAFELY"

USING THE UNIT SAFELY

WARNING

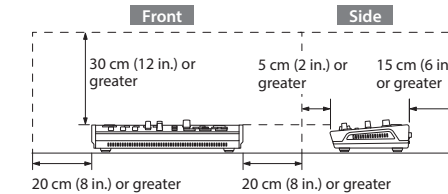
Concerning the Auto Off function

The power to this unit will be turned off automatically after a predetermined amount of time has passed since it was last used for playing music, or its buttons or controls were operated (Auto Off function). If you do not want the power to be turned off automatically, disengage the Auto Off function.



Secure a sufficient amount of space at the setup location

Since this unit normally emits a slight amount of heat, make sure to secure sufficient space around it, as shown below.



Use only the supplied AC adaptor and the correct voltage

Be sure to use only the AC adaptor supplied with the unit. Also, make sure the line voltage at the installation matches the input voltage specified on the AC adaptor's body. Other AC adaptors may use a different polarity, or be designed for a different voltage, so their use could result in damage, malfunction, or electric shock.



Use only the supplied power cord

Use only the attached power cord. Also, the supplied power cord must not be used with any other device.


CAUTION

Handle the ground terminal carefully

If you remove the screw from the ground terminal, be sure to replace it; don't leave it lying around where it could accidentally be swallowed by small children. When refastening the screw, make that it is firmly fastened, so it won't come loose.



Precautions concerning use of phantom power supply

Always turn the phantom power off when connecting any device other than condenser microphones that require phantom power. You risk causing damage if you mistakenly supply phantom power to dynamic microphones, audio playback devices, or other devices that don't require such power. Be sure to check the specifications of any microphone you intend to use by referring to the manual that came with it.



(This instrument's phantom power: 48 V DC, 10 mA Max)

Panel Descriptions

MIC 1 jack

Connect your mic here. If you connect a condenser mic that requires a phantom power supply, turn the side panel [PHANTOM] switch on.

NOTE

- If you use a gooseneck mic, operating noise might be picked up.
- Do not connect a mic that supports plug-in power, or the mics that are included with Roland "VP-03" or "JD-Xi." Doing so will cause malfunctions.



AUDIO EFFECTS [1]–[4] buttons

Turn the audio effects on/off. When on, the button is lit.

Button	Effect
[1] (VOICE CHANGER)	Transforms the pitch or character of the voice.
[2] (BGM)	Plays background music.
[3] (SE)	Plays a sound effect.
[4] (REVERB)	Adds reverberation to the sound.

* The above are the factory settings. You can also assign other functions to each of buttons.

AUDIO MIXER area

SIG/PEAK indicators (MIC 1/MIC 2/LINE)

These are lit green when audio input is detected. If the input is excessive, the indicator is lit red.

Audio faders

Adjust the volume of the MIC 1, MIC 2, and LINE inputs.

SIG/PEAK indicator (USB STREAM)

Indicates the volume level of the USB output.

[USB STREAM] knob

Adjusts the volume of the USB output.

[LEVEL SETUP] button

Accesses the LEVEL SETUP menu. Here you can adjust the volume of the HDMI input, etc.

[PHONES] knob

Adjusts the volume of the headphones.

Level meter

Indicates the volume level of the main output.

[MAIN] knob

Adjusts the volume of the main output.

SETUP area

[MENU] button

When this is on (lit), the menu appears on the display that's connected to the MONITOR (MENU) connector. If you're in a lower level, this button returns to the next higher level. If the highest menu level is shown, this button closes the menu.

[VALUE] knob

Turn: Selects a menu item, or edits the value of a setting.
Press: Confirms the selected menu item or the edited value.

[KEY] button

Turns key compositing on/off. When on (lit), two videos are composited and output.

What is key compositing?

This is a method of turning a portion of a video transparent and layering it onto a background video.



[ON AIR] button

Fades-in/out the main output video.

The [ON AIR] button indicates the fade status.

Lit	Normal output
Blinking	Now fading-in/out
Unlit	Faded out

* The fade-in/out effect does not apply to the video that's output from the MONITOR (MENU) connector.

SCENE area

[SCENE EDIT] button

Directly shows the SCENE menu.

SCENE [A]–[E] buttons

Recall screen arrangements (scenes) that you've registered. The selected button is lit red.

* When you select INPUT [1]–[3], the scene selection is cleared.

INPUT [1]–[3] buttons

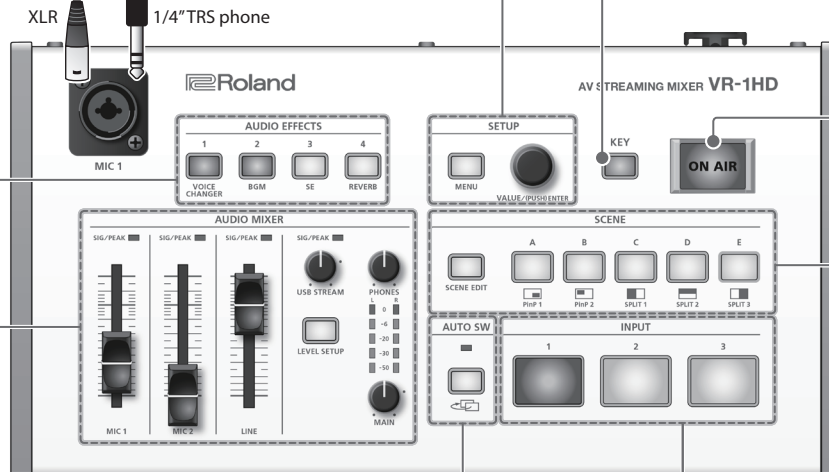
Switch the video that's being input to the VIDEO INPUT 1–3 connectors. The selected button is lit red.

* When you select SCENE [A]–[E], the input video selection is canceled.

What is the main output?

This is the video/audio output that is affected by all processes such as video compositing and audio effects. It is output from the MAIN connector.

This is the video that is seen by the people who are watching the live stream or presentation.



AUTO SW area

[AUTO SW] button

Turn the auto switching function on/off. If this is on (lit), the VIDEO INPUT 1–3 video and scenes A–E will switch automatically.

* Operation differs depending on the auto switching type.

AUTO SW indicator

Lit green at the moment that auto switching switches the video.

* Operates at all times, regardless of whether auto switching is on or off.

IMPORTANT NOTES

Power Supply

- Place the AC adaptor so the side with the indicator faces upwards. The indicator will light when you plug the AC adaptor into an AC outlet.

Placement

- Depending on the material and temperature of the surface on which you place the unit, its rubber feet may discolor or mar the surface.

Repairs and Data

- Before sending the unit away for repairs, be sure to make a backup of the data stored within it; or you may prefer to write down the needed information. Although we will do our utmost to preserve the data stored in your unit when we carry out repairs, in some cases, such as when the memory section is physically damaged, restoration of the stored content may be impossible. Roland assumes no liability concerning the restoration of any stored content that has been lost.

Additional Precautions

- Any data stored within the unit can be lost as the result of equipment failure, incorrect operation, etc. To protect yourself against the irretrievable loss of data, try to make a habit of creating regular backups of the data you've stored in the unit.
- Roland assumes no liability concerning the restoration of any stored content that has been lost.
- This unit allows you to switch images at high speed. For some people, viewing such images can cause headache, nausea, or other discomfort. Do not use this unit to create video that might cause these types of health problems. Roland Corporation will accept no responsibility for any such health problems that may occur in yourself or in viewers.
- Do not use connection cables that contain a built-in resistor.
- This document explains the specifications of the product at the time that the document was issued. For the latest information, refer to the Roland website.

Using External Memories

- Please observe the following precautions when handling external memory devices. Also, make sure to carefully observe all the precautions that were supplied with the external memory device.
- Do not remove the device while reading/writing is in progress.
- To prevent damage from static electricity, discharge all static electricity from your person before handling the device.

Intellectual Property Right

- It is forbidden by law to make an audio recording, video recording, copy or revision of a third party's copyrighted work (musical work, video work, broadcast, live performance, or other work), whether in whole or in part, and distribute, sell, lease, perform or broadcast it without the permission of the copyright owner.
- Do not use this product for purposes that could infringe on a copyright held by a third party. We assume no responsibility whatsoever with regard to any infringements of third-party copyrights arising through your use of this product.
- This product can be used to record or duplicate audio or visual material without being limited by certain technological copy-protection measures. This is due to the fact that this product is intended to be used for the purpose of producing original music or video material, and is therefore designed so that material that does not infringe copyrights belonging to others (for example, your own original works) can be recorded or duplicated freely.
- This product contains eParts integrated software platform of eSOL Co., Ltd. eParts is a trademark of eSOL Co., Ltd. in Japan.
- Roland is an either registered trademark or trademark of Roland Corporation in the United States and/or other countries.
- Company names and product names appearing in this document are registered trademarks or trademarks of their respective owners.

For the U.K.
IMPORTANT: THE WIRES IN THIS MAINS LEAD ARE COLOURED IN ACCORDANCE WITH THE FOLLOWING CODE.

BLUE: NEUTRAL
BROWN: LIVE

As the colours of the wires in the mains lead of this apparatus may not correspond with the coloured markings identifying the terminals in your plug, proceed as follows:
The wire which is coloured BLUE must be connected to the terminal which is marked with the letter N or coloured BLACK.
The wire which is coloured BROWN must be connected to the terminal which is marked with the letter L or coloured RED.
Under no circumstances must either of the above wires be connected to the earth terminal of a three pin plug.

For the USA

SUPPLIER'S DECLARATION OF CONFORMITY
Compliance Information Statement

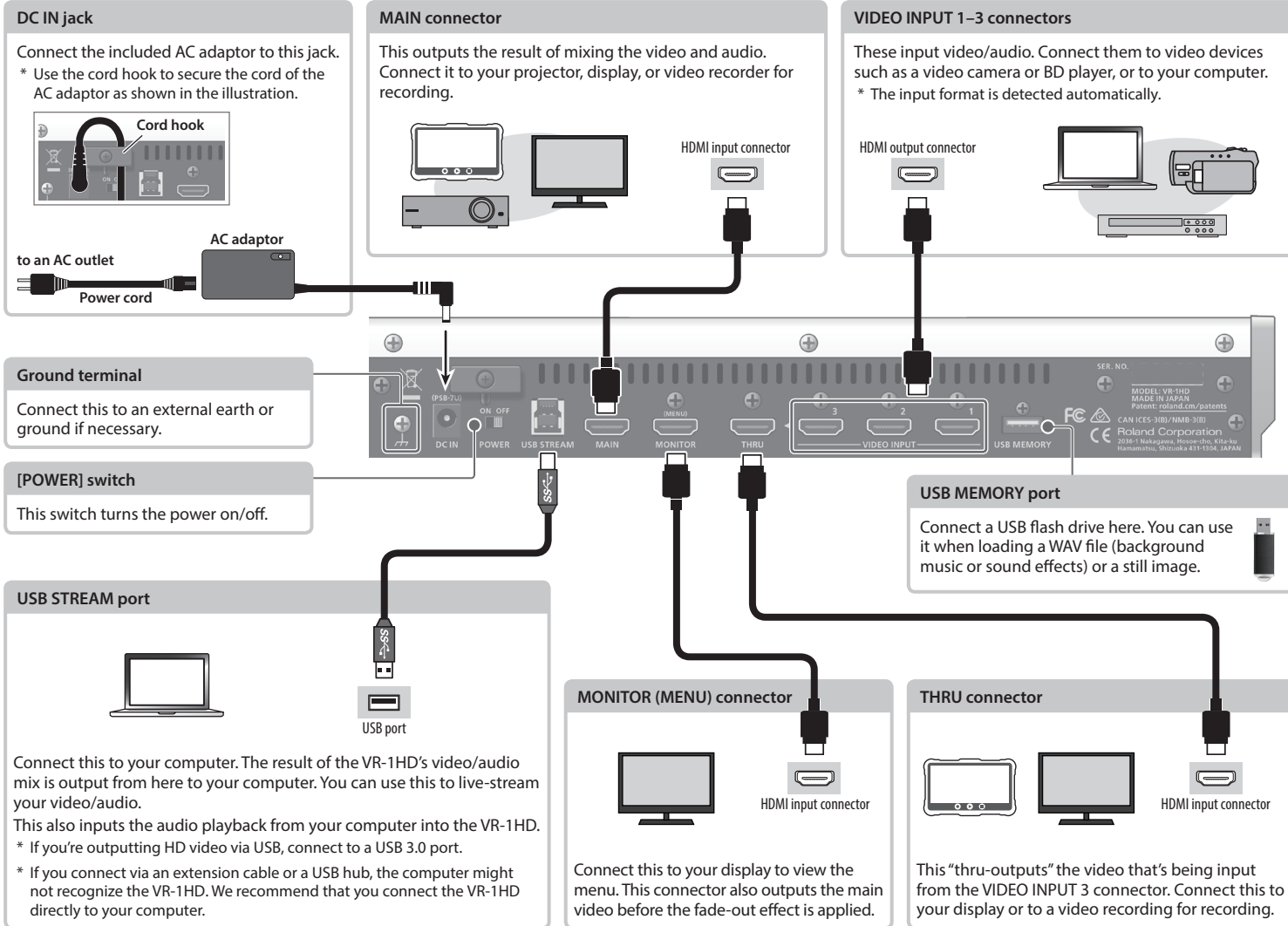
Model Name : VR-1HD
Type of Equipment : AV MIXER
Responsible Party : Roland Corporation U.S.
Address : 5100 S. Eastern Avenue Los Angeles, CA 90040-2938
Telephone : (323) 890-3700



Try Outputting Video and Audio

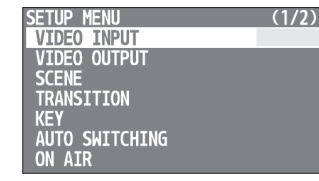
1 Connecting Your Equipment (Panel Descriptions)

- * To prevent malfunction and equipment failure, always turn down the volume, and turn off all the units before making any connections.
- * Do not block the ventilation openings (the slits located on the front and side panels, etc.). If the ventilation openings are blocked, the internal temperatures may rise, causing malfunctions due to excessive heat.



Operating the Menu

- Press the [MENU] or [LEVEL SETUP] button to display the menu.
- Turn the [VALUE] knob to move the cursor to the menu item that you want to change, and then press the [VALUE] knob.
- Repeat step 2 as needed.
Pressing the [MENU] button moves you back one level higher.
- Turn the [VALUE] knob to change the setting value, and then press the [VALUE] knob to confirm.
- Press the button you selected in step 1 several times to close the menu.



About the Auto Off

The power to the VR-1HD turns off automatically when all of the following states persist for 240 minutes (Auto Off function).

- No operation performed on the VR-1HD
- No audio or video input
- No equipment is connected to the MAIN/MONITOR (MENU) connectors

If you do not want the power to be turned off automatically, disengage the Auto Off function. Press the [MENU] button → "SYSTEM" → set "AUTO POWER OFF" to "OFF".

* If the auto-off function has turned off the power, slide the [POWER] switch when you want to turn the power on again.

[PHANTOM] switch

Turns on/off the phantom power of the MIC 1/2 connectors (XLR). Turn on the phantom power supply if you connect a condenser mic that requires a phantom power supply.
* If you don't need phantom power, be sure to turn off the [PHANTOM] switch.
* Phantom power is common to the MIC 1/2 jacks.

MIC 2 jack

Connect your mic here. If you connect a condenser mic that requires a phantom power supply, turn the [PHANTOM] switch on.

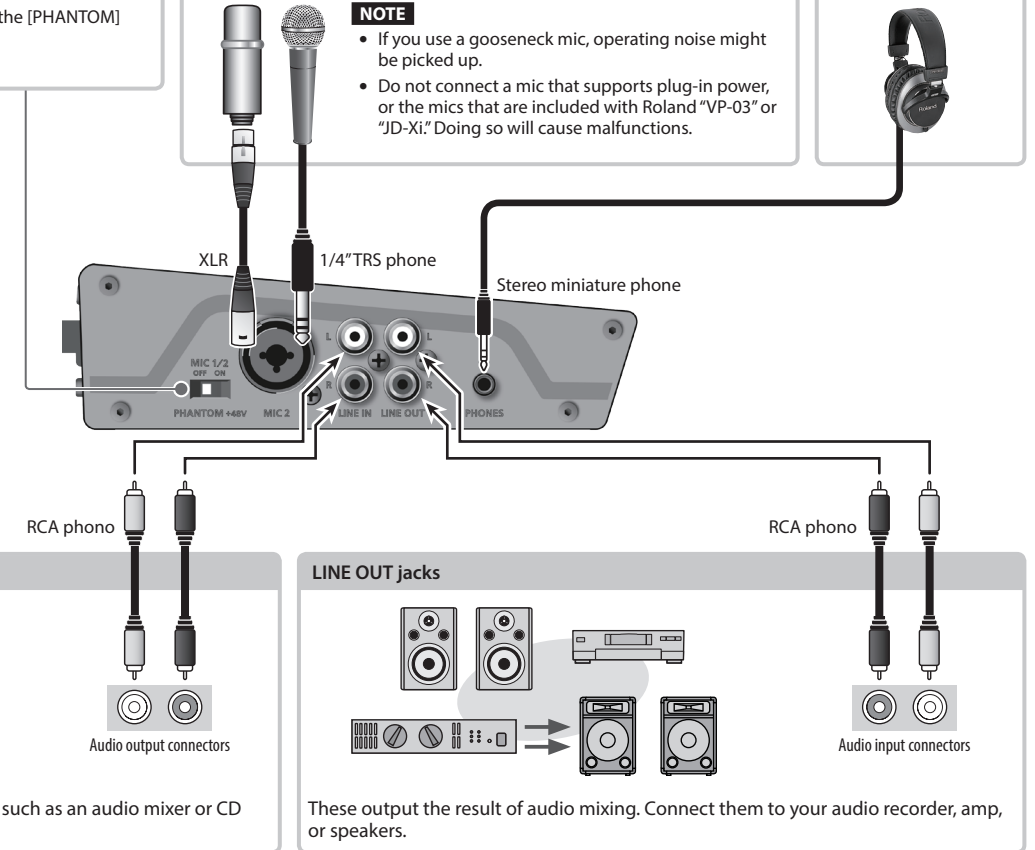
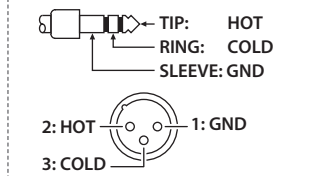
NOTE

- If you use a gooseneck mic, operating noise might be picked up.
- Do not connect a mic that supports plug-in power, or the mics that are included with Roland "VP-03" or "JD-Xi". Doing so will cause malfunctions.

PHONES jack

Connect headphones here.

* Pin assignment of MIC 1/MIC 2 jacks



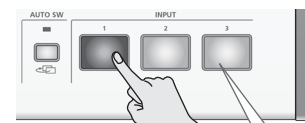
2 Turning the Power On and Outputting Video

- * Before turning the unit on/off, always be sure to turn the volume down. Even with the volume turned down, you might hear some sound when switching the unit on/off. However, this is normal and does not indicate a malfunction.

- Turn on the VR-1HD's [POWER] switch.
- Turn on the power in the order of source devices → output devices.
- Specify the output format as appropriate for the specifications of the display that will show the video.
 - Press the [MENU] button → "VIDEO OUTPUT" → select "OUTPUT FORMAT."
 - Turn the [VALUE] knob to set the output format, then press the [VALUE] knob to confirm.
 - Press the [MENU] button several times to close the menu.

- Press an INPUT [1]-[3] button to select the input video you want to output.

The video changes.



Button	Video status
Lit red	Currently selected input video (the video being output).
Lit white	Valid video is input.
Unlit	No video is input.

If video is not shown

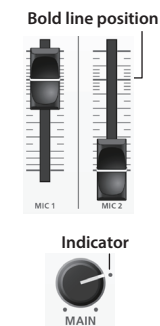
Are the output format settings appropriate?	Check the specifications of the display that's connected to the MAIN connector, and select the appropriate output format.
Could the [ON AIR] button be unlit?	Press the [ON AIR] button to make it light.
Could you be inputting copy-protected (HDCP) video?	If you want to input copy-protected (HDCP) video, press the [MENU] button → "SYSTEM" → set "HDCP" to "ON." * If HDCP is on, video is not output from the USB STREAM port.
Is your video device playing video?	Play back video on your video device so that video is being input to the VR-1HD.

3 Adjusting the Audio

- Adjust the input gain so that the input audio is at an appropriate level.

Here we explain using the MIC 1 audio as an example.

- Position the MIC 1 audio fader near the "bold line" (0 dB).
- Move the [MAIN] knob to a position near the indicator (0 dB).
- Press the [LEVEL SETUP] button → select "MIC 1 HEAD AMP GAIN."
- Turn the [VALUE] knob fully counter-clockwise, minimizing (0 dB) the input gain.
- While producing the sound that will actually be input, slowly turn the [VALUE] knob clockwise to adjust the input gain.

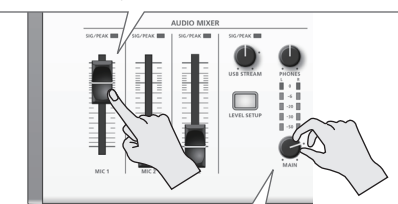


- Raise the input gain as high as possible without allowing the SIG/PEAK indicator of MIC 1 to light red.
- Press the [VALUE] knob to confirm.
- Press the [LEVEL SETUP] button to close the menu.

2. Adjusting the volume balance.

While listening to the audio from your speakers or headphones, use the audio faders to adjust the volume balance of each input.

Raise the volume level of audio you want to make more prominent, for example, an emcee microphone, and lower the volume level for other audio.
To adjust the volume of the HDMI input etc., press the [LEVEL SETUP] button and make adjustments in the LEVEL SETUP menu.



Turn the [MAIN] knob to adjust the volume of the main output.

The level meter will light yellow at the appropriate volume.
* You can use the [USB STREAM] knob to adjust the volume of the USB output.