

V-160HD Remote

Connection Guide

V-160HD Remote is a dedicated iPad app used exclusively for the Roland V-160HD. You can connect the V-160HD to your iPad via Bluetooth, USB or wireless LAN (Wi-Fi) and use the V-160HD Remote app to remotely control the V-160HD.

Connectivity

The V-160HD Remote app and the V-160HD disconnect when you switch to a different app or when the iPad enters sleep mode (auto-lock). The app and the unit automatically reconnect when you return to the V-160HD Remote app, but it may take several seconds for the connection to be restored.

When you want to use V-160HD Remote for a long time, we recommend that you turn off the auto-lock feature on the iPad.

Change this setting in Settings → Display & Brightness → Auto-Lock.

* This app is compatible with V-160HD system program version 1.04 and later. Make sure that the system program of the V-160HD is updated to the latest version.



- The Bluetooth® word mark and logos are registered trademarks owned by Bluetooth SIG, Inc. and any use of such marks by Roland is under license.
- Roland is an either registered trademark or trademark of Roland Corporation in the United States and/or other countries.
- Company names and product names appearing in this document are registered trademarks or trademarks of their respective owners.

Bluetooth® Connection

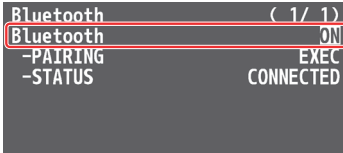
Use Bluetooth to connect the V-160HD to your iPad.

* The communication speed or connectivity of this unit may become unstable when placed near a device that emits radio waves, such as a wireless LAN-compatible device.

V-160HD

1. [MENU] button → “SYSTEM” → “Bluetooth” → and set “REC CONTROL” to “ON.”

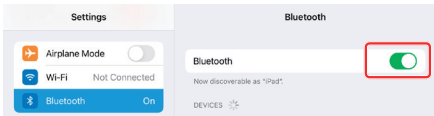
The V-160HD’s Bluetooth function turns on.



2. Press the [MENU] button to close the menu.

iPad

1. Turn Bluetooth on in the Settings menu.

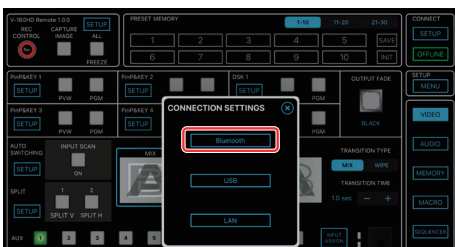


* Even if the available device list shows “Roland V-160HD,” don’t tap it.

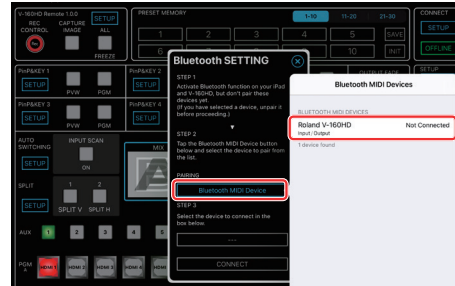
2. Launch the V-160HD Remote app.
3. Tap the CONNECT [SETUP] button.



4. Tap the [Bluetooth] button.

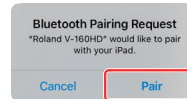


5. Tap the [Bluetooth MIDI Device] button, and tap “Roland V-160HD” in the list.

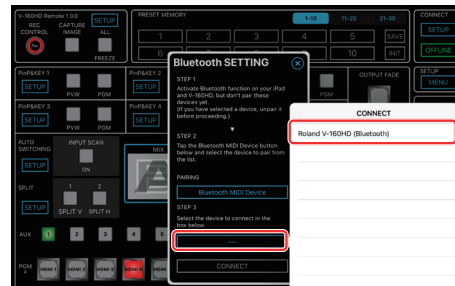


When “Connected” is shown next to the Roland V-160HD listing, pairing is completed.

* If a dialog box that reads “Bluetooth Pairing Request” appears, tap “Pair.”



6. Tap the box in STEP 3, and tap “Roland V-160HD (Bluetooth)” in the list.



* Although you may configure the device to pair with multiple V-160HD units, the device can only pair with one V-160HD at a time.

7. Tap the [CONNECT] button.

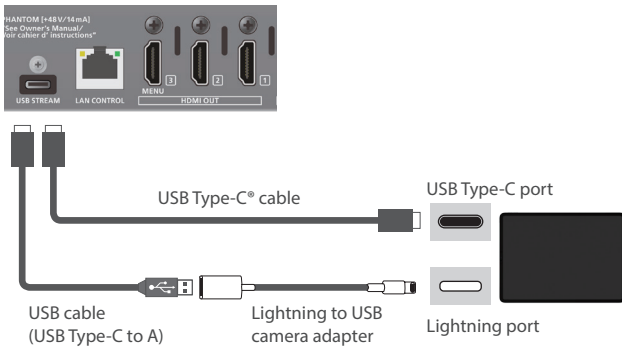


When the status icon changes to “Bluetooth,” the device is connected.

USB Connection

This shows you how to use a USB cable to directly connect your iPad to the V-160HD.

1. Connect the iPad to the USB STREAM port on the V-160HD.



2. Power-on the V-160HD.

iPad

1. Turn on the iPad and launch V-160HD Remote.
2. Tap the CONNECT [SETUP] button.



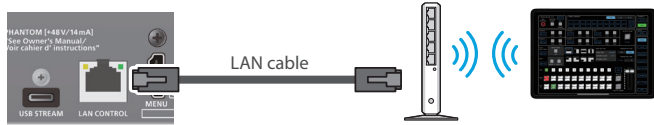
3. Tap the [USB] button.



When the status icon changes to "USB," the device is connected.

Connecting via Wireless LAN (Wi-Fi)

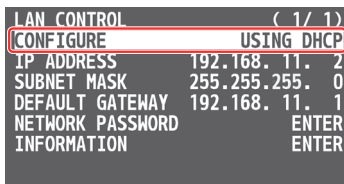
Connect the V-160HD and your wireless LAN master device using a LAN cable, so that you can wirelessly connect to the iPad via the wireless LAN master device.



- * See the Owner's Manual of the wireless LAN master device for how to use that device.
- * The wireless LAN (Wi-Fi) connection speed and connectivity may be unstable in certain network environments.

V-160HD

1. Use a LAN cable to connect the LAN port on your wireless LAN master device to the LAN CONTROL port on the V-160HD.
 - * Do not connect to the internet port or WAN port.
2. Turn on the wireless LAN master device and enable DHCP server functionality on the wireless LAN master device.
3. Power-on the V-160HD.
4. [MENU] button → "LAN CONTROL" → set "CONFIGURE" to "USING DHCP," and press the [VALUE] knob.



The IP address, subnet mask, and default gateway are obtained automatically.

5. Use the [VALUE] knob to select "INFORMATION," and press the [VALUE] knob.

The LAN INFORMATION screen appears.

6. Set a network password (four characters).

Input the password that's set here when accessing the V-160HD from V-160HD Remote.

- 1 Input the password using the [VALUE] knob.
- 2 Use the [VALUE] knob to select "SAVE," and then press the [VALUE] knob.



- 3 Press the [EXIT] button to return to the previous screen.

7. Use the [VALUE] knob to select "INFORMATION," and press the [VALUE] knob.

LAN INFORMATION screen appears.

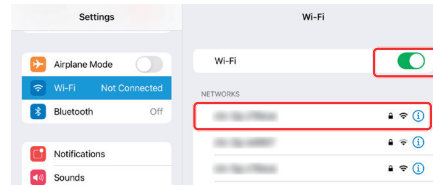
When "CONNECTED" is shown in "STATUS," the V-160HD connection settings are finished.

8. Press the [MENU] button to close the menu.

iPad

1. Connect your iPad via Wi-Fi (wireless LAN).

- 1 Turn Wi-Fi on in the Settings menu.
- 2 From the list of networks, tap the wireless LAN master device to which the V-160HD is connected.



- 3 Enter the password listed on the wireless LAN master device, and tap "Connect."

2. Launch the V-160HD Remote app.

3. Tap the CONNECT [SETUP] button.



4. Tap the [LAN] button.



5. Input the "IP ADDRESS" and "NETWORK PASSWORD" fields, and tap the [CONNECT] button.



IP ADDRESS	Input the IP address of the V-160HD. Check this by pressing the [MENU] button on the V-160HD and selecting "LAN CONTROL" → "IP ADDRESS."
NETWORK PASSWORD	Input the network password (four characters) set on the V-160HD.

When the status icon changes to "LAN," the device is connected.