

StudioLive™ Series III

StudioLive Series III HUI Emulation for ProTools DAW Control Addendum

HUI



Table of Contents

1 Introduction — 1

2 Getting Started — 1

2.1 Controlling your DAW — 2

2.1.1 Enabling HUI Control Emulation — 2

2.1.2 Making the Connections — 3

2.1.3 Setting up your Mixer in Pro Tools — 4

3 Controls — 5

3.1 Control Screen — 5

3.2 Fat Channel Controls — 6

3.3 Encoder and Buttons — 7

3.4 Fader Banks — 7

3.5 Windows and Keyboard Shortcuts — 8

3.6 Transport and Navigation — 9

3.7 User Functions — 11

1 Introduction

Your StudioLive Series III console mixer can be used as a hardware controller for Avid® Pro Tools® using HUI Control Emulation. Once enabled, your StudioLive Series III console will emulate many HUI Control functions.

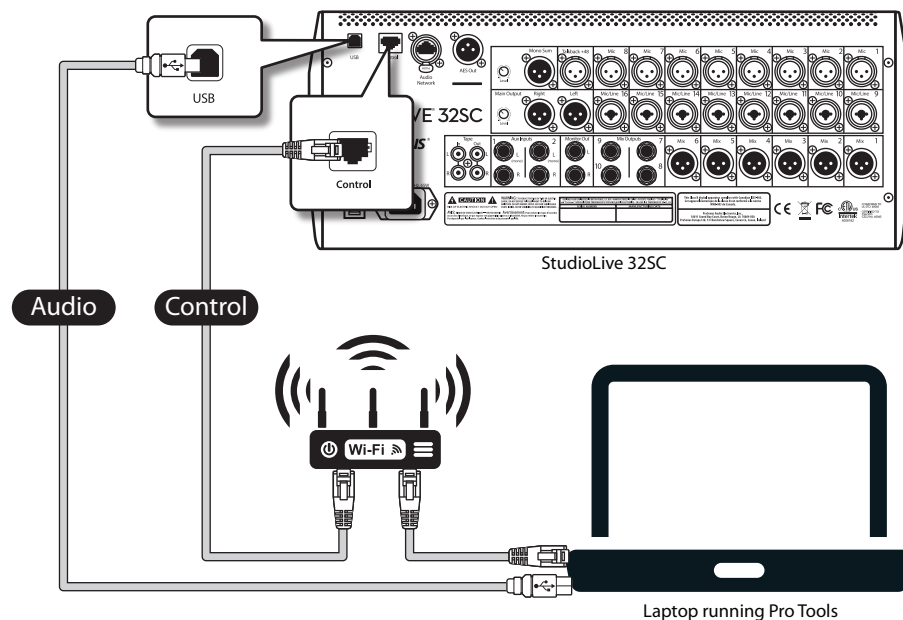
We suggest that you use this addendum to familiarize yourself with the features, applications, and correct connection procedures for your StudioLive mixer before trying to connect it to your computer to control Pro Tools. This will help you avoid problems during installation and setup.

This guide will provide instructions on enabling HUI Control Emulation mode for DAW Control as well as how the HUI Control functions are mapped to your StudioLive Series III console mixer.

Note: HUI and MCU control emulation modes require Universal Control 2.10 or later installed on your computer and firmware version 1.10 or later installed on your StudioLive Series III mixer.

2 Getting Started

To begin using your StudioLive Series III mixer as a HUI Control Emulation device, connect it to an available Ethernet port on the same router to which your computer is connected (wired or wirelessly) or directly to an Ethernet connection on your computer.



Please Note: At the time of publication, remote control over USB is not supported. You must network your mixer and your computer to use DAW mode, in addition to connecting USB for audio transport so that your StudioLive can be used as an audio interface.

Important: If you are hardwiring your computer to the same router as your mixer, you must disable the wireless connection on your computer. UCNET does not support dual network connections.

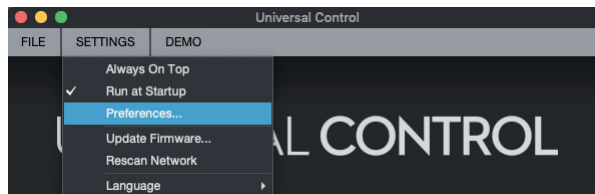
Note: Ethernet-to-Thunderbolt and Ethernet-to-USBC adapters are also supported. Ethernet-to-USB adapters will not allow your computer to network to a StudioLive mixer.

2.1 Controlling your DAW

2.1.1 Enabling HUI Control Emulation

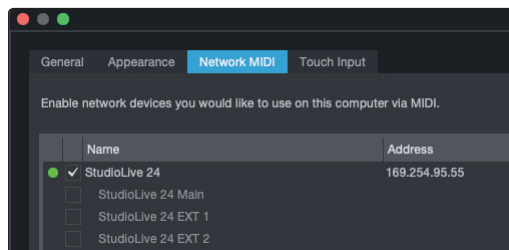


1. Launch Universal Control on the computer that is networked to your StudioLive mixer.
2. Go to Settings | Preferences.

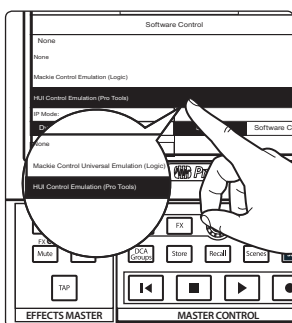
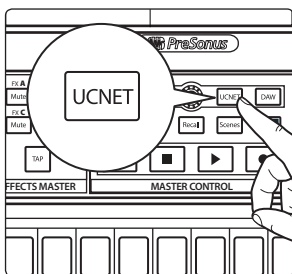


3. Click on the Network MIDI tab.
4. Check the box next to your mixer.

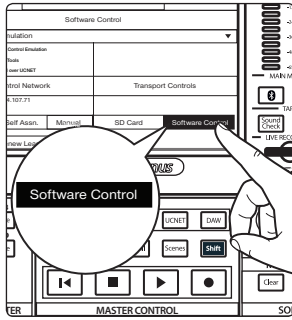
Note: It may take up to a minute for your mixer's IP address to register. A green indicator will appear once your mixer's Network MIDI ports are available.



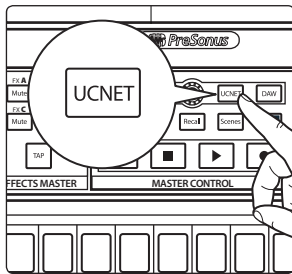
5. Click Apply and then OK to close the Preferences window.
6. Press the UCNET button on your StudioLive mixer.



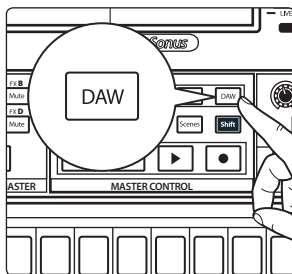
7. Tap on the Software Control drop-down menu on the Touchscreen and select HUI Control Emulation from the drop-down list.



8. If you would like the Transport Controls on your StudioLive to control your DAW, select “Software Control.” If you would like the Transport Controls on your StudioLive to control the SD recorder on your mixer, select “SD Card.”



9. Press the UCNET button again to exit the setup screen.



10. Tap the DAW button your mixer to engage DAW control mode.

Power User Tip: DAW mode can be toggled on and off at will, allowing you to control your mixer’s DSP engine and switch back to controlling your DAW with the touch of a button.

IMPORTANT: Your StudioLive mixer sends HUI Control Emulation information using MIDI-Over-Ethernet. Universal Control must be open and your mixer’s network MIDI ports must be enabled for your StudioLive to show up as a control device in Pro Tools.

2.1.2 Making the Connections

Once you have networked your mixer and your computer, the next step is to launch your DAW and configure your mixer as follows:

- **StudioLive 64S, 32S, or 32:** (4) HUI Controllers
- **StudioLive 32SX or 24:** (3) HUI Controllers
- **StudioLive 32SC or 16:** (2) HUI Controllers

Because HUI Control is an 8-fader protocol, your StudioLive mixer will present multiple MIDI ports, allowing you access to every fader.

32-fader Models	Device Type	24-fader Models	Device Type	16-fader Models	Device Type
PreSonus [SL64S, SL32S, or SL32] Main	HUI #1	PreSonus [SL32SX, SL24] Main	HUI #1	PreSonus [SL32SC, SL16] Main	HUI #1
PreSonus [SL64S, SL32S, or SL32] EXT 1	HUI #2	PreSonus [SL32SX, SL24] EXT 1	HUI #2	PreSonus [SL32SC, SL16] EXT 1	HUI #2
PreSonus [SL64S, SL32S, or SL32] EXT 2	HUI #3	PreSonus [SL32SX, SL24] EXT 2	HUI #3		
PreSonus [SL64S, SL32S, or SL32] EXT 3	HUI #4				

Note: You must create the correct device for each MIDI port and assign both the Input and Output to the appropriate MIDI port on your StudioLive for full functionality.

2.1.3 Setting up your Mixer in Pro Tools

The HUI Control Emulation mode has been optimized for use with Avid Pro Tools software. While also compatible with any DAW that supports the HUI Control protocol, performance may vary. Because of this, PreSonus does not recommend HUI Control Emulation for use with any other software.

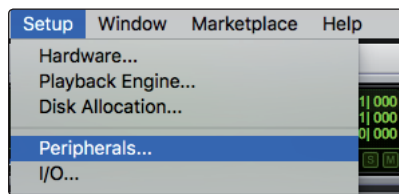
Before you launch Pro Tools, please make sure that the following steps have been completed to ensure proper connectivity:

- Network your StudioLive to your computer.
- Launch Universal Control and make sure your mixer's Network MIDI ports are enabled.
- Engaged HUI Control Emulation on your mixer.
- Leave Universal Control running in the background.

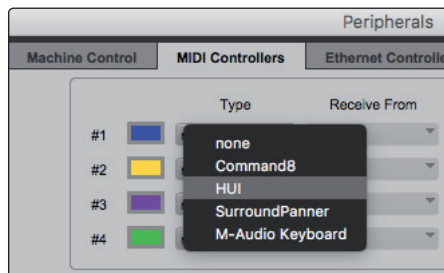
DO NOT CLOSE THIS APPLICATION.

Open Pro Tools and follow the following steps to set up your StudioLive as a control surface:

1. Go to Setups | Peripherals.



2. Create one HUI device under MIDI Controllers.



3. Set the Receive From and Send To menus to "UCNET MIDI StudioLive Main." Set #Ch's to 8.
4. Create a second HUI device and set the Receive From and Send To menus to "UCNET MIDI StudioLive EXT 1."

StudioLive 32SC and 16 Users: Your StudioLive is now ready to use!

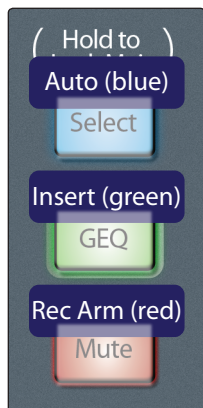
StudioLive 32SX and 24 Users: Repeat Step 4 and create a third HUI device, setting the Receive From and Send To menus to "UCNET MIDI StudioLive EXT 2."

StudioLive 64S, 32S, and 32 Users: Repeat Step 4 twice, creating a third and fourth HUI device, setting the Receive From and Send To menus to "UCNET MIDI StudioLive EXT 2" and "UCNET MIDI StudioLive EXT 3" respectively.

3 Controls

While DAW Mode is active, your channel faders as well as the channel mute, solo, and select buttons will control your DAW and not your mixer.

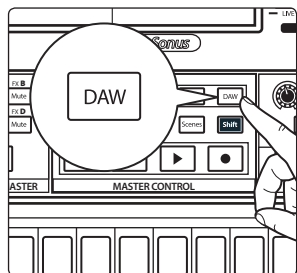
The channel Select buttons can be used for Auto, Insert, and Record Arm using the following modifiers:



Your channel Select buttons will change color depending on which mode is enabled.

In addition to channel functions, many other HUI Control functions are available from the control surface of your StudioLive mixer.

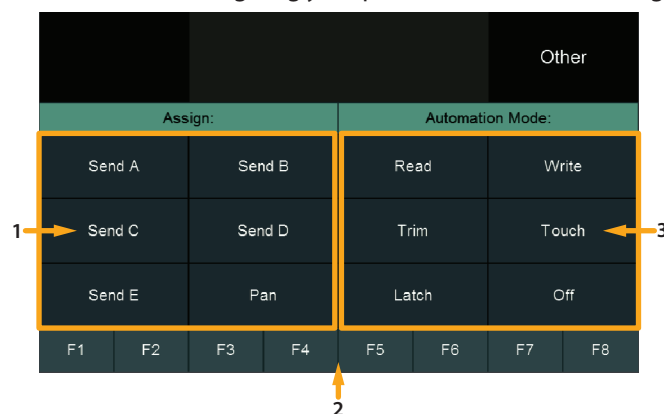
The rest of this section will detail the control mappings.



DAW Mode was designed to be toggled on and off while your Pro Tools session is active. If, at any time, you want to return your mixer control surface to normal mixing functions, simply disengage the DAW button. While DAW mode is disabled and your mixer is networked to your DAW, *the Transport will continue to control your DAW if you enabled Software Control in Section 2.1.2.*

3.1 Control Screen

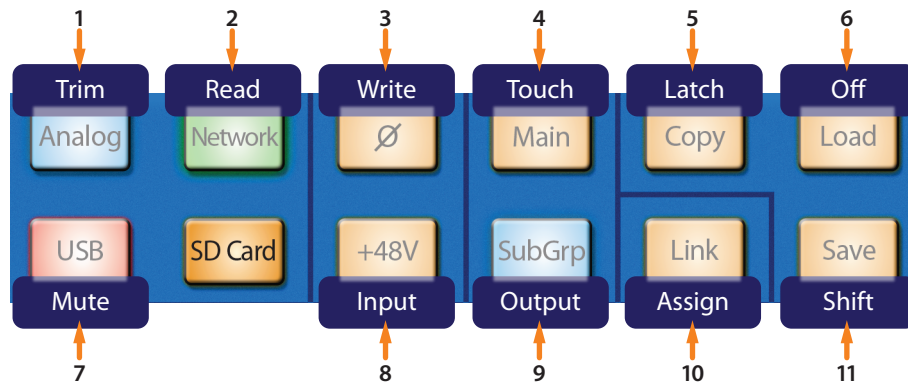
While DAW is active, the following screen will be displayed on your StudioLive mixer's touchscreen, giving you quick access to the following controls:



1. **Assign Modes.** Touch each button to change the function of the Fat Channel encoders.
2. **Function Select.** Enables the F1-F8 functions.
3. **Automation Modes.** Enables the corresponding Automation mode on the currently selected track.

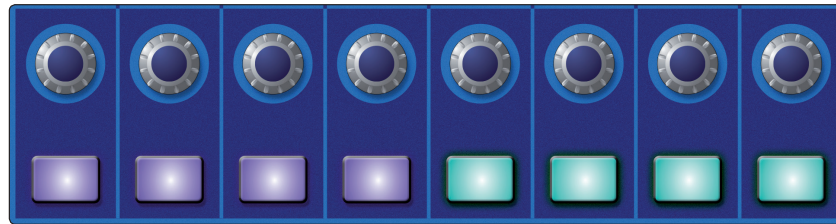
3.2 Fat Channel Controls

The following HUI control functions are available from these Fat Channel buttons:

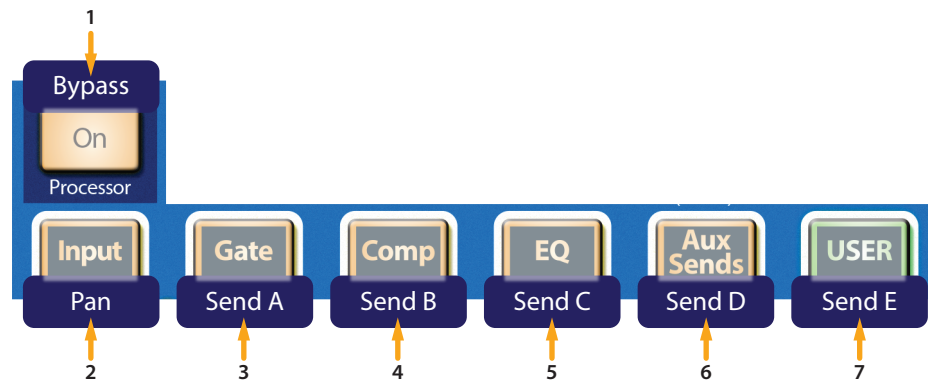


1. **Trim.** Press the Analog button to enable Trim automation on the currently selected track. This function is also available from the Touchscreen. *See Section 3.1 for details.*
2. **Read.** Press the Network button to enable Read automation on the currently selected track. This function is also available from the Touchscreen. *See Section 3.1 for details.*
3. **Write.** Press the Polarity button to enable Write automation on the currently selected track. This function is also available from the Touchscreen. *See Section 3.1 for details.*
4. **Touch.** Press the Main button to enable Touch automation on the currently selected track. This function is also available from the Touchscreen. *See Section 3.1 for details.*
5. **Latch.** Press the Copy button to enable Latch automation on the currently selected track. This function is also available from the Touchscreen. *See Section 3.1 for details.*
6. **Off.** Press the Load button to disable automation on the currently selected track. This function is also available from the Touchscreen. *See Section 3.1 for details.*
7. **Mute.** Press the USB button to globally mute automation.
8. **Input.** Press the +48V button to assign a channel input.
9. **Output.** Press the Subgroup button to assign a channel output.
10. **Assign.** Press the Link button to assign sends or I/O on the selected channel.
11. **Shift.** Press the Save button to engage the Shift functions.

3.3 Encoder and Buttons



The eight buttons and encoders of your StudioLive's Fat Channel can be used to control many different functions. Use the Fat Channel mode buttons to switch their functions as follows:



1. **Bypass.** Press the On button to Bypass the currently selected channel's inserts.
2. **Pan.** Press the Input button to access Pan mode.
3. **Send A.** Press the Gate button to access Send A controls.
4. **Send B.** Press the Comp button to access Send B controls.
5. **Send C.** Press the EQ button to access Send C controls.
6. **Send D.** Press the Aux Sends button to access Send D controls.
7. **Send E.** Press the User button to access Send E Controls.

3.4 Fader Banks



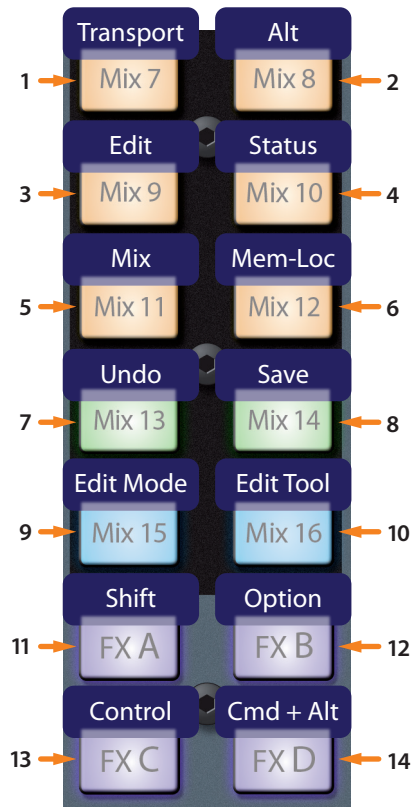
Use the Next and Prev buttons to navigate through banks.



Hold the Shift button to navigate through channels.

3.5 Windows and Keyboard Shortcuts

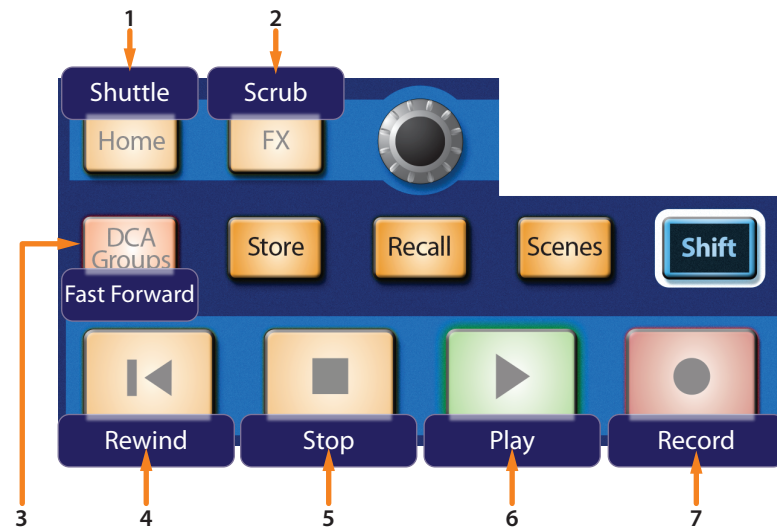
From the Mix select buttons on your StudioLive, you can access the following Windows and Keyboard Shortcuts:



1. **Transport.** Press the Mix 7 button to open or close the Transport window.
2. **Alt.** Press the Mix 8 button to open or close the Alt window.
3. **Edit.** Press the Mix 9 button to open or close the Edit window.
4. **Status.** Press the Mix 10 button open or close the Status window.
5. **Mix.** Press the Mix 11 button to open or close the Mix window.
6. **Mem-Loc.** Press the Mix 12 button to open or close the Mem-Loc window.
7. **Undo.** Press the Mix 13 button to Undo the last action.
8. **Save.** Press the Mix 14 button to Save your Pro Tools session.
9. **Edit Mode.** Press the Mix 15 button to select your Edit Mode.
10. **Edit Tool.** Press the Mix 16 button to select your Edit Tool.
11. **Shift.** Press the FXA button to access the Shift function.
12. **Option.** Press the FXB button to access the Option function.
13. **Control.** Press the FXC button to access the Control function.
14. **Cmd + Alt.** Press the FXD mix select button to access the Command (MacOS) or Alt (WIN) functions.

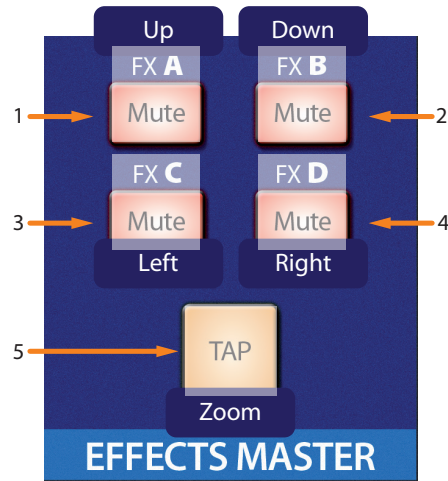
3.6 Transport and Navigation

The following session navigation controls are available from your StudioLive mixer:



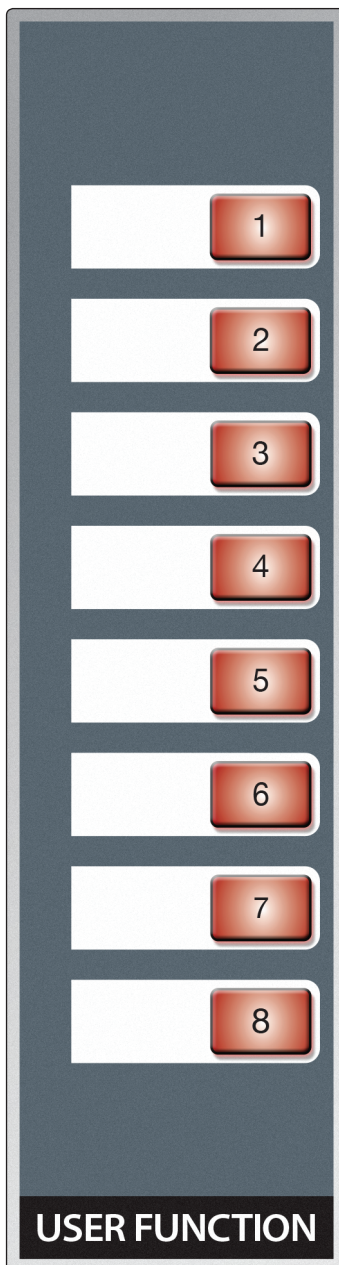
1. **Shuttle.** Press the Home button to engage the Shuttle function. Use the encoder to navigate.
2. **Scrub.** Press the FX button to engage Scrub. Use the encoder to move forward or reverse.
3. **Fast Forward.** Press the DCA Groups button to engage Fast Forward.
4. **Rewind.** Press the Return to Zero button to engage rewind.
5. **Stop.** Press to Stop playback.
6. **Play.** Press to start playback.
7. **Record.** Press to engage record.

Please note that the Transport on your StudioLive (Call-out numbers 4-7) can be used for software control or retain local control over your StudioLive mixer's SD recorder. See Section 2.1.2 for details.



1. **Up.** Press the FXA Mute button to navigate up.
2. **Down.** Press the FXB Mute button to navigate down.
3. **Left.** Press the FXC Mute button to navigate left.
4. **Right.** Press the FXD Mute button to navigate right.
5. **Zoom.** Press the TAP button to zoom.

3.7 User Functions



As mentioned *in Section 3.1*, the F1-F8 functions are available from the Touchscreen. These functions are also available on the User Function buttons.

Note: *Because of their compact size, the StudioLive 32SC and StudioLive 16 do not offer this additional functionality.*

Added bonus: PreSonus' previously Top Secret recipe for...

Rice Dressing

Ingredients:

- 1 lb ground beef
- 1 lb chopped chicken liver
- 1 onion (diced)
- 2 green peppers (diced)
- 4-6 celery stalks (diced)
- 2 garlic cloves (minced)
- ¼ C. chopped fresh parsley
- 3 C. chicken stock
- 6 C. cooked rice
- 1 Tbs. oil
- Salt and pepper to taste
- Cayenne pepper to taste

Cooking Instructions:

1. In a large pot, heat oil on medium high and add meat, salt, and pepper to taste. Stir until meat begins to brown.
2. Lower heat and add all vegetables. Cook until onions are transparent and celery is very tender. Add stock as necessary to prevent burning.
3. Stir in cooked rice. Add remaining stock and simmer on low until ready to serve.

StudioLive™ Series III

StudioLive Series III HUI Emulation for ProTools DAW Control Addendum

HUI



18011 Grand Bay Ct. • Baton Rouge,
Louisiana 70809 USA • 1-225-216-7887
www.presonus.com

Part# 70-22000120-B