

Marshall

Broadcast

Featured Products

Fall 2017



Marshall

Trusted by Broadcasters for Over 30 Years

For over 30 years, **Marshall Electronics** has supplied the broadcast video industry with award-winning and revolutionary products that have helped shape the broadcast market it is today. A strong dedication to providing only the most reliable, highest quality products without sacrificing value is the foundation upon which all divisions of Marshall Electronics continue to operate upon today.

The Marshall Broadcast product line has grown to meet the demands of professionals working in broadcast, film, news, and multimedia production worldwide.

Broadcast Featured Products for Fall 2017

- » Rackmount Monitors
- » POV Cameras
- » PTZ Cameras
- » Cameratop Monitors
- » Camera Accessories
- » HD Streaming Solutions

For more information and complete product listings, visit www.marshall-usa.com/broadcast

Marshall

US Headquarters:
20608 Madrona Ave., Torrance, CA, 90503 USA
Toll Free: (800) 800-6608
support@marshall-usa.com



Marshall V-R241-4K
12G-SDI/HDMI Broadcasting Monitor

This 24" monitor is a cost-effective "all-in-one" solution for post-production houses, broadcasters, and mobile units shooting in 4k. This monitor eliminates the need for Under Monitor Displays and allows tallies to be displayed directly within a flat panel monitor.

- » 12G/3G/HD-SDI input (dual inputs/ outputs)
- » Quad 4-channel SDI display
- » HDMI input accepts up to 2160p
- » Built-in audio de-embetter
- » Built-in speakers and headphone jack



Marshall OR-185
Fully-featured 18.5" Master Confidence Monitor

The Marshall OR-185 award-winning monitor includes a range of professional production and analysis tools packed into an 18.5" best-of-breed IPS panel. The OR-185 is a great master confidence monitor for broadcast control rooms, transfer facilities, and production editing areas.

- » Full-HD 1920x1080 Display
- » Built-in waveform Display
- » Color Vectorscope Display
- » Clipguide Color Gamut Monitor
- » 16-Channel Audio level Meters
- » Red/Blue/Green/Mono Channel View
- » Stereo Speakers (2x3w)
- » User-definable Function Buttons
- » Tri-color Tally



Available in two configurations:

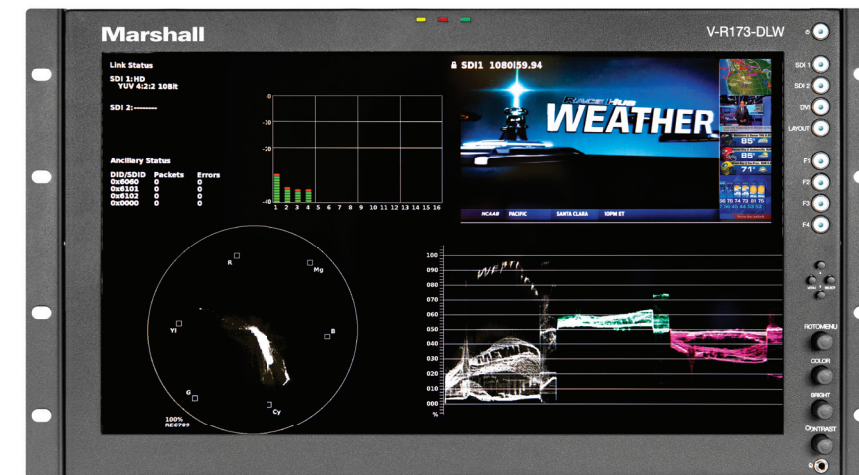
- » The OR-185-AFHD includes 3G-SDI inputs with active loop-through, DVI-I, VGA, composite, component, and analog inputs
- » The OR-185-3GSDI includes 3G-SDI inputs with active loop-through



Marshall V-LCD241-MD
24" Full HD Display with Modular Inputs

This monitor has a straight-forward design with built-in features including waveform and audio bar overlays, loud speakers, programmable function buttons, and three-color tally lights. For use on desktops or using a VESA mount.

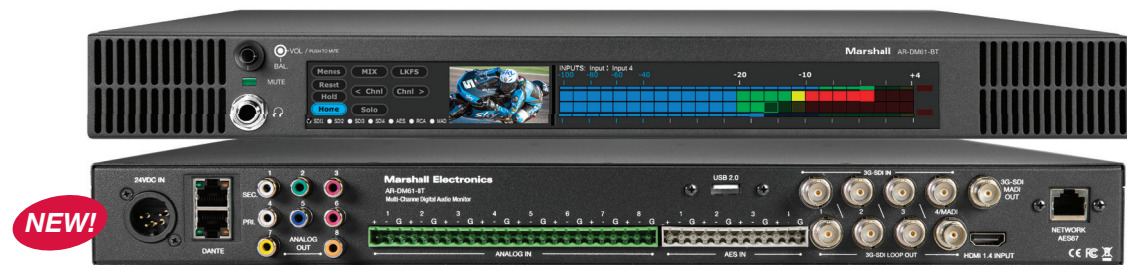
- » Full-HD 1920 x 1080 display
- » HDMI input / output standard
- » Modular design allows addition of 3GSDI input
- » Built-in waveform monitor at the push of a button
- » Audio meters overlay
- » Built-in speakers and headphone jack
- » Rugged 4-pin XLR power connector
- » Tri-color tally



Marshall V-R173-DLW
17.3" Digital Analytics Workstation

The V-R-173-DLW has inputs for 3G, Dual Link, and DVI, with a quad-view output monitor mode that displays waveform, vectorscope, digital audio, color display settings, and more, in a 17.3" high-quality LED panel display.

- » Built-in waveform, vectorscope and digital audio analytics
- » Supports 3G, Dual-link and DVI inputs
- » Quad-view mode displays input signal in 4 quadrants for critical analysis information display
- » Supports TSL, NVISION, Image Video protocols
- » Supports Full CEA-608-B and CEA-708-B closed captioning data
- » Tri-color tally



Marshall AR-DM61-BT
Multi-Channel Digital Audio Monitor

The AR-DM61-BT is a powerful audio/video QC solution designed specifically for TV stations, broadcast trucks, transfer stations, and house of worship facilities. It features versatile audio analysis functions, flexible matrix conversion tools, and a pair of powerful speakers packed into 1 RU.

- » 10" LCD Intuitive Touchscreen Panel displays up to 64 channels vertical or 2 detailed channels horizontal with LKFS bars and peak indicators
- » Built-in live video preview monitor
- » Accepts inputs from multiple signal types with matrix conversion
- » High-powered stereo speakers (up to 100 dB output)



Marshall OR-701A
7" Dual-input Audio/Video Monitor

The OR-701A offers real-time waveform and vectorscope monitoring with built-in audio speakers and vertical audio bar layout for real-time audio monitoring as well. The OR-701A comes standard with auto-sensing HD-SDI inputs, re-clocked output, and an open modular slot for additional input options.

- » Built-in waveform, vectorscope, and adjustable clipping indicator
- » Full range stereo speakers
- » Sixteen 64-segment audio meter display
- » On-screen time code
- » 7 assignable GPI inputs Adjustable color temperature
- » Front panel headphone jacks
- » Rear balanced +4 stereo outputs
- » HD-SDI inputs & outputs with additional modular input slot
- » Tri-color tally

RACKMOUNT & CAMERA-TOP MONITORS

CAMERA-TOP MONITORS



Marshall OR-434

Quad 4.3" Rackmount Monitor

This 4.3" rackmount monitor has built-in waveform and vectorscope functions with adjustable white and black clip level indicators that can be displayed in three different aspect ratios including full screen.

- » Quad 800 x 480 4.3" displays
- » Built-in waveform, vectorscope
- » Adjustable clipping indicator
- » On-screen time code
- » Sixteen 64-segment audio meter display
- » On-screen time code
- » 7 assignable GPI inputs
- » Adjustable color temperature
- » Front panel headphone jacks
- » Rear balanced +4 stereo outputs
- » HD-SDI/SDI inputs & outputs
- » Tri-color tally



Marshall V-R653-IMD-3GTE

Triple 6.5" Rackmount Truck Monitor

This triple-screen 5.6" monitor is designed to save rack space, with features including on-screen video time code, three-color "soft" tallies, audio presence indicator, and RotoMenu™ for easy menu navigation.

- » Triple 6.5" 1024 x 768 displays
- » 3G-SDI input with loop-through
- » 16-channel audio bar display
- » Designed specifically to save rackspace in broadcast trucks
- » Tri-color tally
- » Intuitive Rotomenu™ control for fast and easy menu navigation



Marshall M-LYNX-702

Dual 7" Rackmount Monitor

The M-LYNX-702 Dual 7" LCD display is a feature-packed, economical solution perfect for fly-packs, control rooms, routing rooms, and countless other video system applications. It has multiple video inputs including HDMI and 3GSDI with loop-through.

- » Dual 1024 x 600 displays
- » Supports 3G-SDI, HDMI, composite and component inputs with loop-through
- » Selectable markers, 1:1 pixel mapping, over scan and H/V delay modes
- » Audio de-embedding and monitoring via front panel headphone jacks
- » Tri-color tally



Marshall M-LYNX-702W

Dual 7" Rackmount Monitor with Built-in Analytics Display

The M-LYNX-702W provides maximum versatility with multiple inputs and waveform and vectorscope displays. All functions are available through front panel buttons as well as remote control via an RJ-45 Ethernet port.

- » Dual 1200 x 800 displays
- » Supports 3G-SDI, HDMI, composite and component inputs with loop-through
- » Built-in waveform and vectorscope
- » Selectable markers, 1:1 pixel mapping, over scan and H/V delay modes
- » Audio de-embedding and monitoring via front panel headphone jacks
- » Tri-color tally



Marshall V-LCD70W-SH

7" Camera-top Monitor

The Marshall V-LCD70W-SH packs convenience and power into one lightweight package. Optimized for DSLR or video camera tops at only 1.2 lbs. (544 grams) with built-in features like conversion between HDMI and SDI inputs and waveform and audio metering.

- » Convenient, streamlined design
- » Intuitive controls and menus
- » Waveform display
- » Vectorscope display
- » Peaking & false-color filter
- » 16-Channel audio level meters
- » HDMI & SDI inputs with loop-out
- » Lightweight (less than 1.2Lb/ 544g)



Marshall V-LCD101MD-3G

10" Full-HD Field Monitor with Modular Inputs/Outputs

This 10.1" monitor offers a large, high-resolution LED backlit panel with standard features including a wide variety of formats and markers. It has four user-configurable front panel function buttons, RGB check field / field detect, RGB gain and bias control, and polycarbonate screen protection.

- » 1920 x 1200 LCD panel
- » HDMI & 3GSDI outputs with loop-through
- » High brightness 700-nit display
- » DSLR ratio adjustment
- » Waveform, peaking filter, false color
- » & audio bar display
- » Clip guide (zebra filter)
- » 1/4"-20 mounts on all sides
- » Stereo headphone output
- » Custom screen markers
- » Scratch-resistant screen



Marshall V-LCD71MD-3G

7" Full-HD Camera-Top Monitor with Modular Inputs/Outputs

The V-LCD71MD-3G includes the base unit with a preinstalled MD-3GE module providing an additional 3G/HD/SD-SDI input with loop-through. Modular design allows the user to determine I/O combinations.

- » 1920 x 1080 LCD panel
- » HDMI & 3GSDI outputs with loop-through
- » High brightness 700-nit display
- » DSLR ratio adjustment
- » Waveform, peaking filter, false color
- » & audio bar display
- » Clip guide (zebra filter)
- » 1/4"-20 mounts on all sides
- » Stereo headphone output
- » Custom screen markers
- » Scratch-resistant screen



Marshall V-LCD70-AFHD

7" Camera-Top Monitor with Multiple Inputs/Outputs

The V-LCD70-AFHD includes a wide range of professional features including multiple inputs, picture-in-picture, image flip, screen markers, peaking filter, false color, and zebra filters. The menu is fully accessible from the front of the monitor.

- » HDMI, 3GSDI, component and composite Inputs
- » Tri-color tally
- » 1/4"-20 mounting on 4 sides plus VESA mount
- » Light weight for comfortable camera top use
- » Audio level display
- » On-screen framing marks

POV CAMERAS

Marshall's versatile and high-performance HD cameras are designed in miniature and compact sizes offering professional feature sets, are remote controllable, and feature convenient full-size connectors at affordable prices. Widely used in sports, house of worship, broadcast television, news and weather vans, and a variety of ProAV applications.

For a complete listing of available lens options, visit www.marshall-usa.com



BEST SELLER

Marshall CV502

Miniature POV Camera

- » 2.5 Megapixel HD sensor
- » Easily changeable lenses (comes with 3.7mm)
- » 3G/HD-SDI & CVBS (composite) outputs

HDMI **3G-SDI**

- » Resolutions: 1920x1080p, 1920x1080i, 1280x720p
- » Fast frame rates (determined by model):
 - » CV502-MB outputs 59.94/29.97 fps
 - » CV502-M outputs 50/60/25/30 fps
- » Remote adjust & match via RS485 (Visca)



BEST SELLER

Marshall CV345

Compact POV Camera + HDMI

- » 2.5 Megapixel HD sensor
- » CS-mount Varifocal lens flexibility (sold separately)
- » 3G/HD-SDI & HDMI outputs
- » Resolutions: 1920x1080p, 1920x1080i, 1280x720p

HDMI **3G-SDI**

- » Fast frame rates (determined by model):
 - » CV345-CSB outputs 59.94/29.97 fps
 - » CV345-CS outputs 50/60/25/30 fps
- » Remote adjust & match via RS485 (Visca) commands
- » TRS Audio input (2.5V phantom power)
- » Line or Mic Level selectable



Marshall CV365-CGB

Compact Genlock CS/C Camera

- » 2.5 Megapixel HD sensor
- » Genlock Tri-Level Sync (up to 3G signal @ 1080p59.94/50/60fps)
- » CS-mount varifocal lens flexibility (sold separately)

HDMI **3G-SDI**

- » 3G/HD-SDI & HDMI outputs
- » Resolutions: 1920x1080p, 1920x1080i, 1280x720p
- » Fast frame rates: 59.94, 60, 50, 29.97, 30, 25 fps
- » Remote adjust & match via RS485 (Visca) commands
- » TRS Audio input (2.5V phantom power)



Marshall CV502-WP

Miniature Weatherproof Camera

- » 2.5 Megapixel HD sensor
- » Weatherproof IP67 rated body
- » Easily changeable lenses
- » 2.8mm, 3.7mm (stock), 6.0mm options

3G-SDI

- » 3G/HD-SDI & CVBS (composite) outputs
- » Resolutions: 1920x1080p, 1920x1080i, 1280x720p
- » Fast frame rates (determined by model):
 - » CV502-WPMB outputs 59.94/29.97 fps
 - » CV502-WPM outputs 50/60/25/30 fps
- » Remote adjust & match via RS485 (Visca)



NEW!

Marshall CV-225

Full-HD Weatherproof Lipstick Camera

- » 2.5 Megapixel HD sensor with 3.7mm lens (72° AOV)
- » Weatherproof IP67 rated body with 10' (3 m) breakout cable
- » 3G/HD-SDI output with compact & lightweight body

3G-SDI

- » Resolutions: 1920x1080p, 1920x1080i, 1280x720p
- » Fast frame rates (determined by model):
 - » CV225-MB outputs 59.94/29.97 fps
 - » CV225-M outputs 50/60/25/30 fps
- » Remote adjust & match via RS485 (Visca) commands



BEST SELLER

Marshall CV505

Miniature POV Camera + HDMI

- » 2.5 Megapixel HD sensor
- » Easily changeable lenses (comes with 3.7mm)
- » 3G/HD-SDI & HDMI outputs
- » Resolutions: 1920x1080p, 1920x1080i,

HDMI **3G-SDI**

- » 1280x720p
- » Fast frame rates (determined by model):
 - » CV505-MB outputs 59.94/29.97 fps
 - » CV505-M outputs 50/60/25/30 fps
- » Remote adjust & match via RS485 (Visca)
- » TRS audio input (2.5V phantom power)
- » Line or mic level selectable



NEW!

Marshall CV-RCP-100

Touchscreen RCP Unit

- » Remote adjust and match cameras from long distances with OSD Menu
- » RS485/232 setup over 3-pin XLR Cable run 2,000+ feet (600 meters)
- » Touchscreen display control with fine-tune adjustment dials

Broadcast adjustment settings:

- » Camera model dependent with capability to adjust zoom, focus, pan / tilt, white balance, gain (red / blue), exposure, iris, pedestal (black level), shutter, and brightness

- » USB memory capable for saves and firmware updates
- » Intuitive menus and submenus with HELP feature and favorites page
- » Global or individual adjustments for up to 7 (seven) cameras per RCP



Marshall CV565-MGB

Miniature Genlock Camera

- » 2.5 Megapixel HD Sensor
- » Easily interchangeable M12 lens
- » Genlock Tri-Level 3G/HD-SDI Sync (1080p59.94/1080i59.94)

HDMI **3G-SDI**

- » Accepts any Tri-Level Sync Generator
- » 3G/HD-SDI & HDMI
- » 1920x1080p, 1920x1080i, 1280x720p
- » Frame-rates up to 59.94/50/60 fps
- » Remote adjustable via RS485 (Visca)
- » TRS audio input & embed (2.5V)



NEW!

Marshall CV350-10X

Compact 10x Zoomblock Camera

- » 2.5 Megapixel HD sensor
- » 10x Optical Zoom (4.7~47mm) Block Lens (built-in)
- » Remote control and adjust Zoom, Focus, Iris, Exposure
- » 3G/HD-SDI & HDMI outputs

HDMI **3G-SDI**

- » Resolutions: 1920x1080p, 1920x1080i, 1280x720p
- » Fast frame rates (determined by model):
 - » CV350-10XB outputs 59.94/29.97 fps
 - » CV350-10X outputs 50/60/25/30 fps
- » Remote adjust & match via RS485 (Visca) commands
- » Comes with IR Remote

CAMERA MOUNTS



Marshall CVM-8
Tripod Mount



Marshall CVM-10
Tripod Mount



Marshall CVM-13
Gooseneck Mount



Marshall CV612HT-4K

4K HDBaseT™ PTZ Camera

- » Captures up to 3840x2160p @ 29.97/25 fps
- » Enables one cable to camera setup via HDBaseT™
- » Up to 12X optical zoom with 12X digital zoom
- » 74° panoramic angle of view (AOV) at 3.9mm
- » 340° pan, 120° tilt with variable transition speeds
- » 128 PTZ preset locations
- » Simultaneous HDBaseT™ and HDMI outputs
- » Supports RS422/RS232 interfaces
- » Compatible with most integrated video conferencing systems via VISCA/PELCO
- » Built-in tally light
- » Mountable via table, wall or ceiling

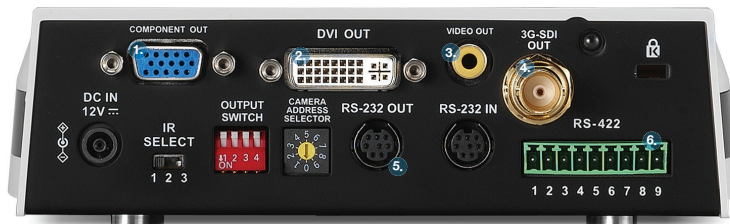


1. HDBaseT carries uncompressed video, power and control
2. HDMI output
3. RS-232 input/output with loopthrough
4. RS-422 interface

Marshall CV620

Full-HD PTZ Camera

- » Captures up to 1920x1080p @ 59.94/60/50 fps
- » Up to 20X optical/ 12x digital zoom
- » 340° pan, 120° tilt with variable transition speeds
- » 3G-SDI, component-VGA, DVI, and composite video outputs
- » Supports RS422/RS232 Interfaces
- » Mountable via table, wall or ceiling
- » Available in black and white models



1. Component VGA output
2. DVI output
3. Composite video output
4. 3G-SDI output
5. RS232 input/output with loopthrough
6. RS 422 interface

Marshall VS-PTC-200

Compact PTZ Joystick Controller

- » 4D Joystick allows for synchronous control over pan, tilt, zoom & focus
- » 128 Presets with adjustable speeds for slow to fast transitions
- » One touch control of brightness, freeze capture, flip/mirror, etc.
- » Full-duplex RS232 & RS485 communication (Visca or Pelco)
- » Can operate 1~255 cameras from one controller



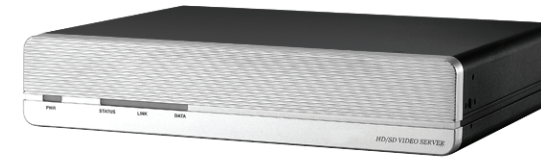
HD STREAMING SOLUTIONS

Marshall VS-104

Full-HD Encoder/ Decoder

The VS-104-3GSDI can be used as either an encoder or decoder, and features quad streaming, two-way audio communication, and over 30 types of PTZ protocol support.

- » Supports up to 1080p at 50/60 fps
- » Supports 4:2:2 and 4:2:0 Signal Structures
- » Accepts HDMI and HD-SDI inputs, analog, and embedded audio inputs
- » Dual LAN and USB ports
- » Supports H.264 and MJPEG codecs



Marshall VS-102

Full-HD Encoder/ Decoder

The Marshall VS-102-HDSDI is a high-definition video server that allows real-time transmission of an SD/HD-SDI, HDMI, or NTSC/PAL composite video signal along with bi-directional AAC encoded high-definition stereo audio over standard IP networks and the internet.

- » Accepts HDMI and HD-SDI inputs, analog, embedded audio inputs
- » Dual streaming
- » USB recording
- » Supports H.264 and MJPEG codecs



Marshall VS-104D

Full-HD Decoder

The VS-104D-3GSDI is a cost-effective decoder based on H.264 with 3GSDI, HDSDI, HDMI and CVBS Outputs. It is capable of decoding the RTSP stream generated by most IP cameras or encoders as well as Onvif compliant high-end cameras from Axis, Bosch, Sony, Pelco and many more.

- » Supports up to 1080p at 50/60 fps
- » Supports up to 1080p at 50/60 fps
- » Supports 4:2:2 and 4:2:0 Signal Structures
- » Accepts HDMI and HD-SDI inputs, analog, and embedded audio inputs
- » Dual LAN ports
- » Dual USB ports
- » Supports H.264 and MJPEG codecs



Marshall VS-103E

Full-HD Encoder

The VS-103E encodes two channels of embedded audio from HDMI or HDSDI input, and supports 60 fps at 1920 x 1080 resolution. It features dual-streaming and supports MPEG2-TS.

- » Accepts HDMI and HD-SDI inputs, analog, embedded audio inputs
- » Dual streaming
- » USB recording
- » Supports H.264 and MJPEG codecs



Marshall VS-SW-100

24-Port IPTV Switch

The VS-SW-100 is a 26-port 10/100/1000Mbps Power over Ethernet switch, which consists of 24 PSE/PoE ports with an additional 2 SFP uplink port. The VS-SW-100 has been designed specifically for use with IP cameras, encoders and decoders.

- » Provides 24 10/100/1000 Mbps switching ports and 2 gigabit SFP ports
- » Supplies up to 30 watts for each port
- » Broadcast traffic storm control
- » Status LED display
- » Complies with IEEE 802.3 10Base-T, IEEE 802.3u 100Base-TX, IEEE 802.3ab 1000Base-T, IEEE 802.3x Flow control, IEEE-802.3af/at



www.marshall-usa.com/broadcast

For sales inquiries, contact:

Bernie Keach

Global Sales Manager, Marshall Broadcast

bernie.keach@marshallelectronics.net

(310) 333-0606 x 1165

A Division of

Marshall Electronics

US Headquarters:

20608 Madrona Ave., Torrance, CA, 90503 USA

Toll Free: (800) 800-6608

support@marshall-usa.com