

# **PROFESSIONAL** **LOUDSPEAKERS** **& MICROPHONES**

PORTABLE SPEAKERS



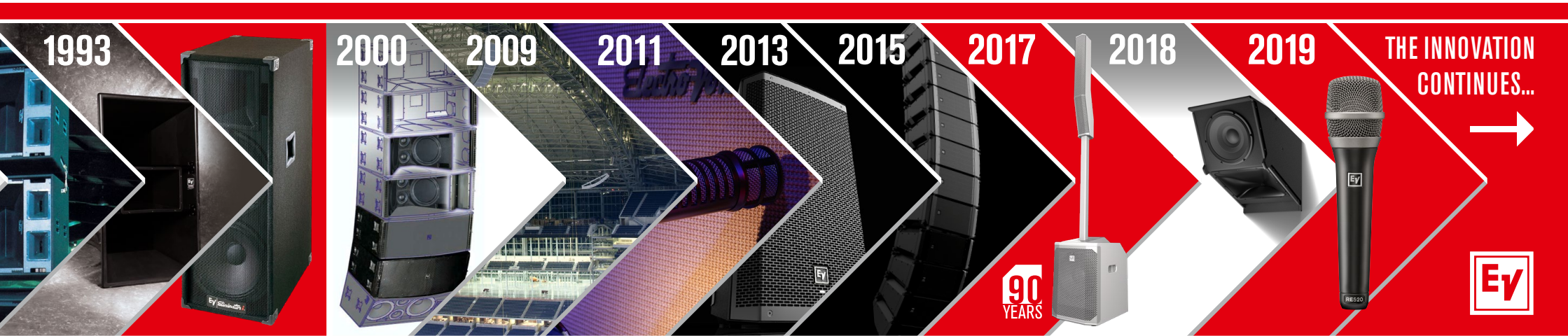
**Electro-Voice**



Electro-Voice stands apart as one of the few companies to design all components in-house – enclosures, waveguides, drivers – ensuring excellent quality for every audio application, from a standalone loudspeaker to a networked sound system. Our products literally speak for themselves: we strive for complete transparency and linearity in our transducers, so the need for external processing is minimized. Ultimately, it's our track record of patents that proves the point: we invent, others imitate.

We're devoted to the art and science of audio, always focused upon innovative ways to create a sensory experience that is second to none. We know our users can hear, feel and appreciate the difference.

## THAT IS WHY WE LIVE FOR SOUND.





# PORTABLE LOUDSPEAKERS

Each member of the award-winning Electro-Voice portable loudspeaker family is designed and engineered in the USA to deliver best-in-class performance across every detail. The components inside EV loudspeakers are manufactured and tested to the industry's highest standards, to ensure years of superior sound quality and reliability. EV stands apart from other portable speaker manufacturers because we also build bigger systems for concert sound – a pro audio heavyweight with a proven track record on the world stage. Everything we've learned at this most competitive and critical level of the industry is condensed into our compact systems to bring you equally uncompromising performance at a smaller scale. No other equivalently priced speaker will sound as good, work as hard, or last as long.

Whatever the application, there's an EV speaker with a set of features to precisely fit your needs and your budget: from the unbeatable value and power-to-weight ratio offered by ZLX up to the benchmark performance and advanced technology of our top-of-the-line ETX and EVOLVE column loudspeakers.

# THE **MOST POWERFUL** FAMILY IN PORTABLE SOUND



**ZXA1/ZX1**



**ZLX**



**ELX200**



**EKX**



**ETX**



**EVOLVE 50**

<b>Woofer size</b>	8"	12", 15"	10", 12", 15"	12", 15"	10", 12", 15"	Array: 8x 3.5" Subwoofer: 1x 12"
<b>Type</b>	2 way	2 way	2 way	2 way	ETX-35P: 3-way ETX-10P/12P/15P: 2-way	Column
<b>Power rating (peak)</b>	800 W	1000 W	1200 W	1500 W	2000 W	1000 W
<b>SPL max range*</b>	126 dB (121 dB)	126-127 dB (125-126 dB)	130-132 dB (127-130 dB)	132-134 dB (131-132 dB)	134-136 dB	127 dB
<b>Coverage (H x V)</b>	90° x 50°	90° x 60°	90° x 60°	90° x 60°	90° x 60° / 60° x 40°	120° x 40°
<b>Material</b>	ABS	Polypropylene	Polypropylene	Plywood	Birch plywood	Composite, aluminum, plywood
<b>Digital signal processing</b>	<input type="checkbox"/>	<input checked="" type="checkbox"/>	<input checked="" type="checkbox"/>	<input checked="" type="checkbox"/>	<input checked="" type="checkbox"/>	<input checked="" type="checkbox"/>
<b>Remote control and monitoring</b>	<input type="checkbox"/>	<input type="checkbox"/>	<input checked="" type="checkbox"/>	<input type="checkbox"/>	<input type="checkbox"/>	<input checked="" type="checkbox"/>
<b>BT audio streaming**</b>	<input type="checkbox"/>	<input checked="" type="checkbox"/> BT models only	<input type="checkbox"/>	<input type="checkbox"/>	<input type="checkbox"/>	<input checked="" type="checkbox"/>
<b>Subwoofer models</b>	12"	-	12", 18"	15", 18"	15", 18"	12"
<b>Passive models</b>	<input checked="" type="checkbox"/>	<input checked="" type="checkbox"/>	<input checked="" type="checkbox"/>	<input checked="" type="checkbox"/>	<input type="checkbox"/>	<input type="checkbox"/>
<b>Warranty</b>	3 years	3 years	3 years	3 years	3 years	3 years

\* (xx) for passive model.

\*\* BlueTooth control is subject to certification. Bluetooth® is available in select countries. Please contact your local sales representative.



# EVOLVE 50

SLEEK SOUNDS STUNNING



Designed to deliver an uncompromising combination of light weight, low-profile looks and superior Electro-Voice audio quality, the EVOLVE 50 sets the performance standard for powered column systems.



## Main Features

### Clean, compact design — built to blend in

Pure, accurate Electro-Voice audio performance in a sleek new form factor. The perfect choice for DJs, mobile entertainers, bands, singer/songwriters and any venue where high-output portable sound is needed — no other column system currently available sounds as good, looks as good, or is as easy to use. Acoustically powerful, aesthetically discreet: column sound evolves to the next level.

### Easy transport and setup

Ergonomically designed handles on both the array and the sub enhance portability. Integrated speaker wires allow quick, clean connection. Angled interface gives user easy access to make adjustments and connections on input panel.

### Professional PA performance

Legendary EV audio quality via eight 3.5" full-range neodymium drivers and a 12" subwoofer, powered by a three-channel amp for high output. Cutting-edge components and tuning provide full-sized sound in a super-streamlined, plug-and-play format.

### Wide, even coverage

Fill the room. Proprietary waveguides provide ultra-wide 120° horizontal coverage and array-formed 40° asymmetrical vertical pattern control. No energy is wasted — exceptional audience coverage and clarity from front to back.

### Single-knob QuickSmart DSP control with LCD display and application and location presets — optimize performance to suit your style and space.

### Wireless control and monitoring

New Bluetooth®\* QuickSmart Mobile makes it easy to dial-in settings in real-time from in front of the system. Quickly configure, control and monitor of up to six EVOLVE 50 systems simultaneously, and receive immediate notification during critical performance conditions.

**High-quality Bluetooth®\* audio** for convenient streaming of background music or musical accompaniment direct from any mobile device.

Available in black or white



**PORTABILITY**

**CLICK 1**

**CLICK 2**

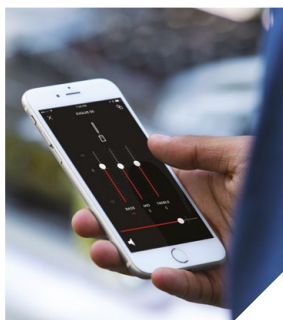


\*Bluetooth control is subject to certification. Bluetooth® is available in select countries. Please contact your local sales representative.



# EVOLVE 50

SLEEK SOUNDS STUNNING



## POWERED

## EVOLVE 50

<b>Application</b>	Column speaker
<b>HF transducer</b>	Array: 8x 3.5"
<b>LF transducer</b>	Subwoofer: 1x 12"
<b>Power rating (peak)</b>	1000 W
<b>SPL max</b>	127 dB
<b>Coverage (H x V)</b>	120° x 40°
<b>Frequency range (-10 dB)</b>	37 Hz-20 kHz
<b>Material</b>	Subwoofer: 15 mm plywood Column: composite Pole: aluminum
<b>Digital signal processing</b>	Best-in-class processing via EV's signature single-knob user interface with LCD. Easy operation via four presets (Music, Live, Speech, Club), three-band EQ, five user-programmable presets, output delay, phantom power, input level control and metering and master volume control to optimize gain structure.
<b>Remote control and monitoring</b>	EV Quick Smart Mobile application: quickly and wirelessly configure, control and monitor up to six EVOLVE 50 systems simultaneously, and receive immediate notification during critical performance conditions.
<b>BT audio streaming*</b>	<input checked="" type="checkbox"/>
<b>Crossover frequency</b>	200 Hz
<b>Connectors</b>	2x XLR/TRS combo jack input, 1x 3.5 mm input, 1x stereo RCA input, 1x Bluetooth wireless audio input, 1x XLR THRU output, 1x XLR MIX OUT output
<b>Weight</b>	Subwoofer: 20.3 kg (44.66 lbs) Column: 4.7 kg (10.34 lbs) Pole: 1.25 kg (2.75 lbs) Subwoofer cover: 0.4 kg (0.9 lbs) Bag for column and pole: 0.85 kg (1.87 lbs)
<b>Dimensions (W x H x D)</b>	Subwoofer: 345 mm x 530 mm x 471 mm (13.6" x 20.9" x 18.5") Column: 102 mm x 825 mm x 172 mm (4.0" x 32.5" x 6.9") Pole: 48.5 mm x 929 mm x 55 mm (1.9" x 36.6" x 2.2")
<b>Colors</b>	Black or white
<b>Accessories</b>	EVOLVE50-SUBCVR subwoofer cover EVOLVE50-CASE column speaker carrying case, wheels EVOLVE50-PL-SB/W column speaker pole, short, black/white

\*BlueTooth control is subject to certification. Bluetooth® is available in select countries. Please contact your local sales representative.





# EVOLVE 50

SLEEK SOUNDS STUNNING

**120°**  
WIDE, EVEN  
COVERAGE



# ETX

THE FULLY LOADED FLAGSHIP



ETX powered loudspeakers are the top-of-the-line members of the EV portable sound family. They are engineered from the ground up to be the highest-specification products in their class, designed to deliver an exceptional combination of advanced audio performance and all-around versatility.

The ETX series combines intelligent FIR-Drive technology with innovative industrial design to deliver stunning performance and unbeatable versatility in the most demanding applications. EV-engineered components ensure superior sound quality and the utmost reliability.

They are ideal for pro musicians, DJs, mobile entertainers and rental companies looking for high-end compact sound reinforcement and will ensure concert quality finesse in small-to-medium permanent installations. Each model provides sound quality, power and features beyond the reach of other similarly sized professional grade powered speakers — tour-quality sound in a tidy, easy-to-use package.



**QUICKSMART DSP PRO MAKES IT EASY TO OPTIMIZE YOUR ETX SYSTEM FOR ANY APPLICATION**



## Main Features

**State-of-the-art components** deliver breathtaking sonic power and clarity and maximum reliability: 1800 W (subs) and 2000 W (full range) class-D power amplifiers with integrated DSP produce high SPLs utilizing high sensitivity, low-distortion transducers (including DVX and SMX series woofers and precision DH3-B HF titanium compression drivers).

**Lightweight, ergonomic, durable and compact** 18 mm, 13-ply birch plywood enclosures finished with EVCoat. Eight mounting points for permanent installations (full-range models). Custom die-cast aluminum pole cups, handles and hardware.

**EV's FIR-Drive** utilizes the latest Finite Impulse Response (FIR) filter technology to optimize transducer linearity. Advanced limiter algorithms provide independent peak and thermal transducer protection.

**Single-knob QuickSmart DSP control with LCD display and application and location presets** – optimize performance to suit your style and space.

**EV-patented SST (Signal Synchronized Transducer) waveguide design** for superior driver time alignment, enhancing audio impact and intelligibility.



# ETX

THE FULLY LOADED FLAGSHIP



**ETX-10P**



**ETX-12P**



**ETX-15P**

## POWERED

<b>Application</b>	Pole-mounted / monitor	Pole-mounted / monitor	Pole-mounted / monitor
<b>HF transducer</b>	DH3-B 1.25 titanium compression driver	DH3-B 1.25 titanium compression driver	DH3-B 1.25 titanium compression driver
<b>LF transducer</b>	SMX2100 254 mm (10")	SMX2120 300 mm (12")	SMX2150 380 mm (15")
<b>Power rating (peak)</b>	2000 W	2000 W	2000 W
<b>SPL max</b>	134 dB	135 dB	135 dB
<b>Coverage (H x V)</b>	90° x 60°	90° x 60°	90° x 60°
<b>Frequency range (-10 dB)</b>	65 Hz-20 kHz	43 Hz-20 kHz	40 Hz-20 kHz
<b>Material</b>	18 mm, 13-ply Birch plywood with EVCoat	18 mm, 13-ply Birch plywood with EVCoat	18 mm, 13-ply Birch plywood with EVCoat
<b>Digital signal processing</b>	Complete full-function DSP control via a single-knob interface. LCD screen easy system setup and monitoring: location/application EQ presets, limiter status, input level controls/meters and master volume control to ensure optimal gain structure. Parametric EQ allows for more precise configuration. Subs feature a preset for true cardioid performance.		
<b>Crossover frequency</b>	1700 Hz	1600 Hz	1500 Hz
<b>Connectors</b>	2x XLR/TRS combo jack. 1x XLR link output	2x XLR/TRS combo jack. 1x XLR link output	2x XLR/TRS combo jack. 1x XLR link output
<b>Suspension</b>	(8) M10 suspension points	(8) M10 suspension points	(8) M10 suspension points
<b>Weight</b>	20.3 kg (44.8 lbs)	23.6 kg (52.0 lbs)	27.7 kg (61.1 lbs)
<b>Dimensions (W x H x D)</b>	330 mm x 526 mm x 365 mm (13" x 21" x 14")	381 mm x 613 mm x 400 mm (15" x 24" x 16")	431 mm x 691 mm x 447 mm (17" x 27" x 18")
<b>Colors</b>	Black	Black	Black
<b>Accessories</b>	ETX-10P wall-mount bracket ETX-10P truss adaptor ETX-10P cover EBK-M10 eyebolt attachment kit	ETX-12P wall-mount bracket ETX-12P, ETX-15P and ETX-35P truss adaptor ETX-12P cover EBK-M10 eyebolt attachment kit	ETX-15P wall-mount bracket ETX-12P, ETX-15P and ETX-35P truss adaptor ETX-15P cover EBK-M10 eyebolt attachment kit





**ETX-15SP**



**ETX-18SP**



**ETX-35P**

## POWERED

<b>Application</b>	Subwoofer	Subwoofer	3-way loudspeaker
<b>HF transducer</b>	-	-	DH3-B 1.25 titanium compression driver
<b>MF transducer</b>	-	-	EVS-6C 165 mm (6.5")
<b>LF transducer</b>	DVX3159A 380 mm (15")	DVX3180A 457 mm (18")	SMX2151 380 mm (15")
<b>Power rating (peak)</b>	1800 W	1800 W	2000 W
<b>SPL max</b>	134 dB	135 dB	136 dB
<b>Coverage (H x V)</b>	-	-	60° x 40°
<b>Frequency range (-10 dB)</b>	32 Hz-180 Hz	28 Hz-180 Hz	38 Hz-20 kHz
<b>Material</b>	18 mm, 13-ply Birch plywood with EVCoat	18 mm, 13-ply Birch plywood with EVCoat	18 mm, 13-ply Birch plywood with EVCoat
<b>Digital signal processing</b>	Complete full-function DSP control via a single-know interface. LCD screen easy system setup and monitoring: location/application EQ presets, limiter status, input level controls/ meters and master volume control to ensure optimal gain structure. Parametric EQ allows for more precise configuration. Subs feature a preset for true cardioid performance.		
<b>Crossover frequency</b>	-	-	700 Hz, 2900 Hz
<b>Low-pass frequency</b>	ETX full range speakers, 80/100/120/150 Hz	ETX full range speakers, 80/100/120/150 Hz	-
<b>Connectors</b>	2x XLR/TRS combo jack, 2x XLR link output	2x XLR/TRS combo jack, 2x XLR link output	2x XLR/TRS combo jack, 1x XLR link output
<b>Suspension</b>	-	-	(8) M10 suspension points
<b>Weight</b>	41.7 kg (91.9 lbs)	51.8 kg (114.2 lbs)	38.2 kg (84.2 lbs)
<b>Dimensions (W x H x D)</b>	576 mm x 471 mm x 825 mm (23" x 19" x 32")	675 mm x 550 mm x 910 mm (27" x 22" x 36")	469 mm x 1023 mm x 426 mm (18" x 40" x 17")
<b>Colors</b>	Black	Black	Black
<b>Accessories</b>	ETX-15SP cover	ETX-18SP cover	ETX-35P array bracket ETX-35P cover EBK-M10 eyebolt attachment kit



# EKX

MAXIMUM SONIC IMPACT.  
MINIMUM EFFORT.



With Electro-Voice engineering and innovation working together for maximum sonic impact, the EKX series makes it easy to optimize the power of your performance.

EKX combines renowned Electro-Voice sound quality and reliability – all in a compact package suitable for a wide range of sound reinforcement scenarios, including musicians, DJs and small-to-medium live, club and installed sound applications. The EKX series is equipped with professional features not usually found at its price point, making it an incredible value.



**QUICKSMART DSP PLUS  
FOR BEST-IN-CLASS  
VISUAL CONTROL AND  
MONITORING**





## Main Features

**Single-knob QuickSmart DSP control with LCD display and application and location presets** – optimize performance to suit your style and space.

**High-efficiency Class-D power amplifiers**

(up to 1500 W) deliver up to 134 dB peak SPL via high-sensitivity transducers designed and engineered by EV (powered models only).

**Intelligent thermal management**

with a variable-speed fan controlled by multiple onboard sensors, ensuring superior performance and reliability in demanding environmental conditions (powered models only).

**EV-patented SST (Signal Synchronized Transducer)**

**waveguide design** for superior driver time alignment, enhancing audio impact and intelligibility.



# EKX

MAXIMUM SONIC IMPACT.  
MINIMUM EFFORT.



**EZX-12P**



**EZX-15P**



**EZX-15SP**



**EZX-18SP**

## POWERED

<b>Application</b>	Pole-mounted / monitor	Pole-mounted / monitor	Subwoofer	Subwoofer
<b>HF transducer</b>	DH-1M 1" titanium compression driver	DH-1M 1" titanium compression driver	-	-
<b>LF transducer</b>	EVS-12M 300 mm (12")	EVS-15M 381 mm (15")	EVS-15C 381 mm (15")	EVS-18C 457 mm (18")
<b>Power rating (peak)</b>	1500 W	1500 W	1300 W	1300 W
<b>SPL max</b>	132 dB	134 dB	133 dB	134 dB
<b>Coverage (H x V)</b>	90° x 60°	90° x 60°	-	-
<b>Frequency range (-10 dB)</b>	50 Hz-20 kHz	48 Hz-20 kHz	40 Hz-180 Hz	35 Hz-180 Hz
<b>Material</b>	15 mm Plywood with EVCoat	15 mm Plywood with EVCoat	15 mm Plywood with EVCoat	15 mm Plywood with EVCoat
<b>Digital signal processing</b>	Quicksmart DSP features best-in-class processing, EV's signature single-knob user interface and intuitive menu navigation via LCD Visual, monitoring of limiter status, input level control and meters, and master volume control to ensure optimal gain structure		Quicksmart DSP features best-in-class processing, EV's signature single-knob user interface and intuitive menu navigation via LCD Cardioid Control Technology feature for subwoofers allows output to be steered towards the audience with up to 35 dB reduction on stage when multiple subs are deployed	
<b>Crossover frequency</b>	1700 Hz	1700 Hz	-	-
<b>Low-pass frequency</b>	-	-	Electro-Voice full range speakers, 80/100/120/150 Hz	Electro-Voice full range speakers, 80/100/120/150 Hz
<b>Connectors</b>	1x Stereo RCA input, 2x XLR/TRS combo jack, 1x XLR link output	1x Stereo RCA input, 2x XLR/TRS combo jack, 1x XLR link output	2x XLR/TRS combo jacks, 2x XLR link outputs	2x XLR/TRS combo jacks, 2x XLR link outputs
<b>Suspension</b>	(8) M10 suspension points	(8) M10 suspension points	-	-
<b>Weight</b>	18.8 kg (41.4 lbs)	24.4 kg (53.9 lbs)	26.2 kg (57.7 lbs)	32.8 kg (72.4 lbs)
<b>Dimensions (W x H x D)</b>	375 mm x 607 mm x 356 mm (15" x 24" x 14")	432 mm x 685 mm x 429 mm (17" x 27" x 17")	530 mm x 455 mm x 551 mm (21" x 18" x 22")	606 mm x 520 mm x 612 mm (24" x 20" x 24")
<b>Colors</b>	Black	Black	Black	Black
<b>Accessories</b>	EZX-12/12P wall-mount bracket EZX-TCA truss adaptor EZX-12 cover EBK-M10 eyebolt attachment kit	EZX-15/15P wall-mount bracket EZX-TCA truss adaptor EZX-15 cover EBK-M10 eyebolt attachment kit	EZX-15S cover	EZX-18S cover





# PASSIVE



**EZX-12**



**EZX-15**



**EZX-15S**



**EZX-18S**

<b>Application</b>	Pole-mounted / monitor	Pole-mounted / monitor	Subwoofer	Subwoofer
<b>HF transducer</b>	DH-1M 1" titanium compression driver	DH-1M 1" titanium compression driver	-	-
<b>LF transducer</b>	EVS-12M 300 mm (12")	EVS-15M 381 mm (15")	EVS-15C 381 mm (15")	EVS-18C 457 mm (18")
<b>Power handling</b>	350 W continuous, 1400 W peak	400 W continuous, 1600 W peak	400 W continuous, 1600 W peak	400 W continuous, 1600 W peak
<b>SPL max</b>	131 dB	132 dB	133 dB	134 dB
<b>Coverage (H x V)</b>	90° x 60°	90° x 60°	-	-
<b>Frequency range (-10 dB)</b>	55 Hz-20 kHz	50 Hz-20 kHz	40 Hz-300 Hz	35 Hz-300 Hz
<b>Material</b>	15 mm Plywood with EVCoat	15 mm Plywood with EVCoat	15 mm Plywood with EVCoat	15 mm Plywood with EVCoat
<b>Crossover frequency</b>	1600 Hz	1600 Hz	-	-
<b>Recommended high-pass frequency</b>	55 Hz	50 Hz	35 Hz	30 Hz
<b>Connectors</b>	Dual NL4	Dual NL4	Dual NL4	Dual NL4
<b>Suspension</b>	(8) M10 suspension points	(8) M10 suspension points	-	-
<b>Weight</b>	17.4 kg (38.3 lbs)	23.2 kg (51.2 lbs)	24.9 kg (55.0 lbs)	31.8 kg (70.0 lbs)
<b>Dimensions (W x H x D)</b>	375 mm x 607 mm x 356 mm (15" x 24" x 14")	432 mm x 685 mm x 429 mm (17" x 27" x 17")	530 mm x 455 mm x 551 mm (21" x 18" x 22")	606 mm x 520 mm x 612 mm (24" x 20" x 24")
<b>Colors</b>	Black	Black	Black	Black
<b>Accessories</b>	EZX-12/12P wall-mount bracket EZX-TCA truss adaptor EZX-12 cover	EZX-15/15P wall-mount bracket EZX-TCA truss adaptor EZX-15 cover	EZX-15S cover	EZX-18S cover
<b>Recommended Dynacord amplifier</b>	L1800FD, L2800FD	L1800FD, L2800FD	L1800FD, L2800FD	L1800FD, L2800FD



# ELX200

DOES MORE. WEIGHS LESS.



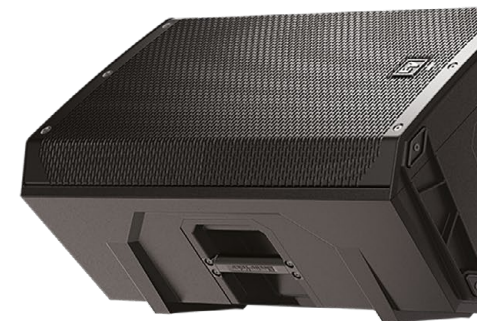
The ELX200 series offers professional Electro-Voice audio quality, precision control and robust, EV-engineered components in an ultra-lightweight package – a truly potent blend of performance and portability.

Get the smooth clarity of the EV sound in the right size to suit your needs: with 10", 12" and 15" two-way models, and 12" and 18" subwoofers available in both powered and passive versions, ELX200 is a flexible, feature-rich choice for DJs, mobile entertainers, bands and musicians.



**LIGHTWEIGHT  
DESIGN WITH NO  
COMPROMISES**

**REMOTE CONTROL  
AND MONITORING  
WITH MOBILE APP**





## Main Features

**Wireless control and monitoring via the new Bluetooth® QuickSmart Mobile app\*** to control your sound while in front of your system. Quickly configure up to six ELX200 loudspeakers simultaneously and receive immediate notification during critical performance conditions.

**Heavyweight performance in a lightweight package** which makes it easy to carry, its tough construction and components ensure legendary EV durability and sound quality, night after night. Super-efficient Class-D power amplifiers deliver distortion-free maximum SPLs utilizing high-sensitivity transducers – all designed and engineered by Electro-Voice.

**Single-knob QuickSmart DSP control with LCD display and application and location presets** – optimize performance to suit your style and space.

**EV-patented SST (Signal Synchronized Transducer) waveguide design** for superior driver time alignment, enhancing audio impact and intelligibility.

\*Bluetooth control is subject to certification. Bluetooth® is available in select countries. Please contact your local sales representative.



# ELX200

DOES MORE. WEIGHS LESS.

All ELX200 models are available in black or white



## POWERED

**ELX200-10P**

**ELX200-12P**

**ELX200-15P**

**ELX200-12SP**

**ELX200-18SP**

<b>Application</b>	Pole-mounted / monitor	Pole-mounted / monitor	Pole-mounted / monitor	Subwoofer	Subwoofer
<b>HF transducer</b>	DH-1C 1" titanium compression driver	DH-1C 1" titanium compression driver	DH-1C 1" titanium compression driver	-	-
<b>LF transducer</b>	EVS-10M 254 mm (10")	EVS-12M 300 mm (12")	EVS-15M 381 mm (15")	EVS-12L 300 mm (12")	EVS-18L 457 mm (18")
<b>Power rating (peak)</b>	1200 W	1200 W	1200 W	1200 W	1200 W
<b>SPL max</b>	130 dB	130 dB	132 dB	129 dB	132 dB
<b>Coverage (H x V)</b>	90° x 60°	90° x 60°	90° x 60°	-	-
<b>Frequency range (-10 dB)</b>	53 Hz-20 kHz	51 Hz-20 kHz	48 Hz-19 kHz	41 Hz-165 Hz	40 Hz-145 Hz
<b>Material</b>	Polypropylene	Polypropylene	Polypropylene	15 mm Plywood with EVCcoat	15 mm Plywood with EVCcoat
<b>Digital signal processing</b>	Quicksmart DSP features best-in-class processing. Easy setup via four presets, sub/top system-match, three-band EQ, five user-programmable presets, visual monitoring of limiter status, input level control and meters, and master volume control to optimize gain structure, all via LCD.				
<b>Remote control and monitoring</b>	EV Quick Smart Mobile application: quickly and wirelessly configure, control and monitor up to six ELX200 loudspeakers simultaneously, and receive immediate notification during critical performance conditions.				
<b>Crossover frequency</b>	1800 Hz	1700 Hz	1600 Hz	-	-
<b>Low-pass frequency</b>	-	-	-	Electro-Voice full range speakers, 80/100/120/150 Hz	Electro-Voice full range speakers, 80/100/120/150 Hz
<b>Connectors</b>	1x Stereo RCA input, 2x XLR/TRS combo jack, 1x XLR	1x Stereo RCA input, 2x XLR/TRS combo jack, 1x XLR	1x Stereo RCA input, 2x XLR/TRS combo jack, 1x XLR	2x XLR/TRS combo jacks and 2x XLR link outputs	2x XLR/TRS combo jacks and 2x XLR link outputs
<b>Suspension</b>	(3) M10 suspension points	(3) M10 suspension points	(3) M10 suspension points	-	-
<b>Weight</b>	13.5 kg (29.9 lbs)	15.6 kg (34.4 lbs)	18.9 kg (41.7 lbs)	19.1 kg (42.2 lbs)	29.0 kg (64 lbs)
<b>Dimensions (W x H x D)</b>	330 mm x 531 mm x 319 mm (13.0" x 21.0" x 12.6")	363 mm x 629 mm x 344 mm (14.3" x 24.8" x 13.6")	423 mm x 710 mm x 384 mm (16.7" x 28.0" x 15.2")	445 mm x 397 mm x 457 mm (17.6" x 16.7" x 18.0")	507 mm x 600 mm x 574 mm (20.0" x 23.7" x 22.6")
<b>Colors</b>	Black or white	Black or white	Black or white	Black or white	Black or white
<b>Accessories</b>	ELX200-10-CVR padded cover ELX200-BRKT wall-mount bracket EBK1-M10-3PACK forged M10 3pack short shank eyebolt kit	ELX200-12-CVR padded cover ELX200-BRKT wall-mount bracket EBK1-M10-3PACK forged M10 3pack short shank eyebolt kit	ELX200-15-CVR padded cover ELX200-BRKT wall-mount bracket EBK1-M10-3PACK forged M10 3pack short shank eyebolt kit	ELX200-12S-CVR padded cover	ELX200-18S-CVR padded cover



# ELX200

DOES MORE. WEIGHS LESS.

All ELX200 models are available in black or white



**ELX200-10**



**ELX200-12**



**ELX200-15**



**ELX200-12S**



**ELX200-18S**

## PASSIVE

Application	Pole-mounted / monitor	Pole-mounted / monitor	Pole-mounted / monitor	Subwoofer	Subwoofer
HF transducer	DH-1C 1" titanium compression driver	DH-1C 1" titanium compression driver	DH-1C 1" titanium compression driver	-	-
LF transducer	EVS-10M 254 mm (10")	EVS-12M 300 mm (12")	EVS-15M 381 mm (15")	EVS-12L 300 mm (12")	EVS-18L 457 mm (18")
Power handling	300 W continuous, 1200 W peak	300 W continuous, 1200 W peak	300 W continuous, 1200 W peak	400 W continuous, 1600 W peak	400 W continuous, 1600 W peak
SPL max	127 dB	128 dB	130 dB	129 dB	133 dB
Coverage (H x V)	90° x 60°	90° x 60°	90° x 60°	-	-
Frequency range (-10 dB)	49 Hz-22 kHz	51 Hz-20 kHz	52 Hz-19 kHz	33 Hz-300 Hz	28 Hz-300 Hz
Material	Polypropylene	Polypropylene	Polypropylene	15 mm Plywood with EVCcoat	15 mm Plywood with EVCcoat
Crossover frequency	2000 Hz	1700 Hz	1600 Hz	-	-
Recommended high-pass frequency	55 Hz	50 Hz	42 Hz	42 Hz	35 Hz
Connectors	Dual NL4	Dual NL4	Dual NL4	Dual NL4	Dual NL4
Suspension	(3) M10 suspension points	(3) M10 suspension points	(3) M10 suspension points	-	-
Weight	13.4 kg (29.6 lbs)	15.2 kg (33.4 lbs)	18.7 kg (41.2 lbs)	17.2 kg (38.0 lbs)	26.6 kg (58.7 lbs)
Dimensions (W x H x D)	330 mm x 531 mm x 319 mm (13.0" x 21.0" x 12.6")	363 mm x 629 mm x 344 mm (14.3" x 24.8" x 13.6")	423 mm x 710 mm x 384 mm (16.6" x 28.0" x 15.1")	445 mm x 397 mm x 457 mm (17.6" x 16.7" x 18.0")	507 mm x 600 mm x 574 mm (20.0" x 23.7" x 22.6")
Colors	Black or white	Black or white	Black or white	Black or white	Black or white
Accessories	ELX200-10-CVR padded cover ELX200-BRKT wall-mount bracket EBK1-M10-3PACK forged M10 3pack short shank eyebolt kit	ELX200-12-CVR padded cover ELX200-BRKT wall-mount bracket EBK1-M10-3PACK forged M10 3pack short shank eyebolt kit	ELX200-15-CVR padded cover ELX200-BRKT wall-mount bracket EBK1-M10-3PACK forged M10 3pack short shank eyebolt kit	ELX200-12S-CVR padded cover	ELX200-18S-CVR padded cover
Recommended Dynacord amplifier	L1300FD, L1800FD	L1300FD, L1800FD	L1300FD, L1800FD	L1800FD, L2800FD	L1800FD, L2800FD



# ZLX

THE BEST-SELLING PRO AUDIO  
SPEAKERS IN THE WORLD



The ZLX series brings class-leading sound quality, power and overall performance and reliability to a price point that positions them as the best-value lightweight pro audio speakers available today.

Its combination of streamlined industrial design, compact size, user-friendly operation and portability and plentiful power have made it the go-to choice for DJ/musician applications across the globe. Perfect for practice spaces and small clubs, and great for basic installations and portable multi-purpose sound.



**CUSTOM-BUILT  
1000 W CLASS-D  
AMPLIFIER**

**VISUAL CONTROL  
AND MONITORING  
WITH PRESETS**



The ZLX-12BT (12" 2-way) and ZLX-15BT (15" 2-way) are both Bluetooth®\* equipped for audio streaming. The BT models combine the superior components, coverage and clarity of the regular ZLX models with the latest Bluetooth technology.

\*Bluetooth control is subject to certification. Bluetooth® is available in select countries. Please contact your local sales representative.



## Main Features

**EV-engineered components** matched with a 1000-W Class-D amplifier for best-in-class sound.

**Single-knob QuickSmart DSP control with LCD display** and application and location presets — optimize performance to suit your style and space.

**Input level meters and independent amplifier control** — ensure optimal gain structure in seconds.

**Lightweight, super-durable composite construction** with unique hi/lo grip design for effortless pole mounting and portability.

**EV-patented SST (Signal Synchronized Transducer) waveguide design** for superior driver time alignment, enhancing audio impact and intelligibility.



# ZLX

THE BEST-SELLING PRO AUDIO  
SPEAKERS IN THE WORLD



**ZLX-12P**



**ZLX-12BT**



**ZLX-15P**



**ZLX-15BT**

## POWERED

<b>Application</b>	Pole-mounted / monitor	Pole-mounted / monitor	Pole-mounted / monitor	Pole-mounted / monitor
<b>HF transducer</b>	DH-1K	DH-1K	DH-1K	DH-1K
<b>LF transducer</b>	EVS-12K 300 mm (12") Woofer	EVS-12K 300 mm (12") Woofer	EVS-15L 380 mm (15") Woofer	EVS-15L 380 mm (15") Woofer
<b>Power rating (peak)</b>	1000 W	1000 W	1000 W	1000 W
<b>SPL max</b>	126 dB	126 dB	127 dB	127 dB
<b>Coverage (H x V)</b>	90° x 60°	90° x 60°	90° x 60°	90° x 60°
<b>Frequency range (-10 dB)</b>	50 Hz-20 kHz	50 Hz-20 kHz	42 Hz-20 kHz	42 Hz-20 kHz
<b>Material</b>	Polypropylene	Polypropylene	Polypropylene	Polypropylene
<b>Digital signal processing</b>	QuickSmartDSP features best-in-class processing. Easy setup via four presets, sub/top system-match, two-band EQ, five user-programmable presets, visual monitoring of limiter status, input level control and meters, and master volume control to optimize gain structure, all via LCD.			
<b>BT audio streaming*</b>	<input type="checkbox"/>	<input checked="" type="checkbox"/>	<input type="checkbox"/>	<input checked="" type="checkbox"/>
<b>Connectors</b>	2x XLR/TRS combo jack, 1x 3.5 mm input, 1x XLR link output	2x XLR/TRS combo jack, 1x 3.5 mm input, 1x XLR link output	2x XLR/TRS combo jack, 1x 3.5 mm input, 1x XLR link output	2x XLR/TRS combo jack, 1x 3.5 mm input, 1x XLR link output
<b>Weight</b>	15.6 kg (34.3 lbs)	15.6 kg (34.3 lbs)	17.3 kg (38.0 lbs)	17.3 kg (38.0 lbs)
<b>Dimensions (W x H x D)</b>	356 mm x 610 mm x 356 mm (14" x 24" x 14")	356 mm x 610 mm x 356 mm (14" x 24" x 14")	423 mm x 685 mm x 383 mm (17" x 27" x 15")	426 mm x 685 mm x 383 mm (17" x 27" x 15")
<b>Colors</b>	Black	Black	Black	Black
<b>Accessories</b>	ZLX-12-CVR ZLX padded cover ZLX-BRKT ZLX wall-mount bracket	ZLX-12-CVR ZLX padded cover ZLX-BRKT ZLX wall-mount bracket	ZLX-15-CVR ZLX padded over ZLX-BRKT ZLX wall-mount bracket	ZLX-15-CVR ZLX padded over ZLX-BRKT ZLX wall-mount bracket

\*Bluetooth control is subject to certification. Bluetooth® is available in select countries. Please contact your local sales representative.





**ZLX**THE BEST-SELLING PRO AUDIO  
SPEAKERS IN THE WORLD.**ZLX-12****ZLX-15**

## PASSIVE

<b>Application</b>	Pole-mounted / monitor	Pole-mounted / monitor
<b>HF transducer</b>	DH-1K	DH-1K
<b>LF transducer</b>	EVS-12K 300 mm (12") Woofer	EVS-15L 380 mm (15") Woofer
<b>Power handling</b>	250 W continuous, 1000 W peak	250 W continuous, 1000 W peak
<b>SPL max</b>	125 dB	126 dB
<b>Coverage (H x V)</b>	90° x 60°	90° x 60°
<b>Frequency range (-10 dB)</b>	55 Hz-20 kHz	44 Hz-20 kHz
<b>Material</b>	Polypropylene	Polypropylene
<b>Crossover frequency</b>	2100 Hz	1700 Hz
<b>Recommended high-pass frequency</b>	40 Hz	40 Hz
<b>Connectors</b>	Dual NL4	Dual NL4
<b>Weight</b>	14.9 kg (32.8 lbs)	16.6 kg (36.5 lbs)
<b>Dimensions (W x H x D)</b>	356 mm x 610 mm x 356 mm (14" x 24" x 14")	423 mm x 685 mm x 383 mm (17" x 27" x 15")
<b>Colors</b>	Black	Black
<b>Accessories</b>	ZLX-12-CVR ZLX padded cover ZLX-BRKT ZLX wall-mount bracket	ZLX-15-CVR padded cover ZLX-BRKT ZLX wall-mount bracket
<b>Recommended Dynacord amplifier</b>	L1300FD	L1300FD



# ZXA1 & ZX1

PUNCHES ABOVE ITS WEIGHT



Designed for top-notch quality with amazing versatility, the ZX1/ZXA1 series stands for performance and practicality in sound reinforcement. The ZX1 and ZXA1 are at home in any installed or portable application, from commercial sound to clubs, house of worship, stages, retail stores or sports facilities. The high-power woofers and drivers ensure full-range sound with awesome richness and clarity. Sleek contemporary styling fits in anywhere. Light weight makes transport easy while enabling a multitude of flying and mounting options.

**FULL-RANGE SOUND  
WITH AWESOME  
RICHNESS AND CLARITY**

**SLEEK CONTEMPORARY  
STYLING FITS IN  
ANYWHERE**





## Main Features ZXA1

**Best performance to weight ratio** in portable sound – massive power with a minimal footprint. Weighing-in at just 8.6 and 20.9 kg (19 and 46 pounds) respectively and equipped with the latest EV-engineered components, the ZXA1 and ZXA1-Sub combine to deliver crisp, clean highs and larger-than-life lows in an unbelievably compact, self-powered package.



**An incredibly versatile solution for mobile and small-venue sound reinforcement**, ZXA1 features the latest professional-grade Electro-Voice drivers and a powerful 800 W amplifier, all presented in a stylish, super-durable ABS enclosure to create a lightweight loudspeaker that looks as good as it sounds.



## Main Features ZX1

**Compact, lightweight and high performance**  
ZX1 shines in monitor wedge applications, especially where the reproduction of vocal frequencies is crucial. It's a symmetrical cabinet design which means you simply have to put ZX1 on its side to achieve a 45° monitor angle. And with the ability to rotate its 90° x 50° horn, you can adjust the dispersion pattern to suit your unique application.



**Wide array of mounting options** including an integrated pole mount and removable rubber feet that hide M8 mounting studs. Dual NL4 connectors and an ergonomically molded carrying slot make ZX1 perfect for portable music, AV rental and mobile audio applications.



# ZXA1

PUNCHES ABOVE ITS WEIGHT



**ZXA1**



**ZXA1-SUB**

## POWERED

<b>Application</b>	Pole-mounted / monitor	Subwoofer
<b>HF transducer</b>	DH-2005 25.4 mm (1") exit compression driver	-
<b>LF transducer</b>	EV-8L 204 mm (8") Woofer	EVS-12S 305 mm (12") Woofer
<b>Power rating (peak)</b>	800 W	700 W
<b>SPL max</b>	126 dB	126 dB
<b>Coverage (H x V)</b>	90° x 50°	-
<b>Frequency range (-10 dB)</b>	48 Hz-20 kHz	44 Hz-118 Hz
<b>Material</b>	ABS	9-ply 15 mm Plywood, internally braced, with textured paint
<b>Crossover frequency</b>	1800 Hz	100 Hz
<b>Connectors</b>	1x XLR mic input with gain control, 1x XLR/TRS combo jack, 1x XLR link output	2x XLR stereo input, 2x XLR stereo output
<b>Weight</b>	8.6 kg (19.0 lbs)	20.9 kg (46.0 lbs)
<b>Dimensions (W x H x D)</b>	282 mm x 457 mm x 264 mm (11.10" x 17.99" x 10.39")	444.5 mm x 400 mm x 457.2 mm (17.50" x 15.75" x 18.00")
<b>Colors</b>	Black and white	Black
<b>Accessories</b>	MP1-B mounting plate kit CB1 carrying bag, convertible TSS-1 tripod speaker stand TSP-1 (2) TSS-1 tripod speaker stands with carrying case	ASP-1 height adjustable steel subwoofer stand





# PASSIVE

## ZX1

## ZX1-SUB

<b>Application</b>	Pole-mounted / monitor	Subwoofer
<b>HF transducer</b>	DH-2005 25.4 mm (1") exit compression driver	-
<b>LF transducer</b>	EV-8L 203 mm (8") Driver	EVS-12S 305 mm (12") Woofer
<b>Power handling</b>	200 W continuous, 800 W peak	400 W continuous, 1600 W peak
<b>SPL max</b>	121 dB	127 dB
<b>Coverage (H x V)</b>	90° x 50°	-
<b>Frequency range (-10 dB)</b>	48 Hz-20 kHz	42 Hz-200 Hz
<b>Material</b>	High impact Polymer	9-ply 15 mm Plywood, internally braced, with textured paint
<b>Crossover frequency</b>	1700 Hz	-
<b>Recommended high-pass frequency</b>	40 Hz	38 Hz
<b>Connectors</b>	Neutrik speakon NL4	2x NL4
<b>Weight</b>	8.4 kg (18.5 lbs)	19.8 kg (43.6 lbs)
<b>Dimensions (W x H x D)</b>	282 mm x 457 mm x 264 mm (11.12" x 17.98" x 10.38")	444.5 mm x 400 mm x 457.2 mm (17.50" x 15.75" x 18.00")
<b>Colors</b>	Black or white	Black
<b>Accessories</b>	MP1-B mounting plate kit CB1 carrying bag SC-ZX1 slip cover for ZX1 CA-ZX truss clamp adapter for ZX1 100BK tripod speaker stand	ASP-1 adjustable subwoofer pole-mount ZXA1-SUB-CVR slip cover

<b>Recommended Dynacord amplifier</b>	L1300FD	L1800FD, L2800FD
---------------------------------------	---------	------------------



# ZX1

PUNCHES ABOVE ITS WEIGHT





**North America Global HQ**  
Bosch Security Systems, Inc.  
Burnsville, MN  
+1-952-884-4051

**Asia Pacific Regional HQ**  
Robert Bosch (SEA) Pte Ltd  
Singapore  
+65 6571 2808

**Latin America Regional HQ**  
Robert Bosch, Limitada  
Security Systems  
Campinas, SP, Brasil  
+55 19 2103-4282

**Europe Regional HQ**  
Bosch Sicherheitssysteme GmbH  
(EVI Audio GmbH)  
Straubing, Germany  
+49 9421 706-0

**China Regional HQ**  
Bosch (Shanghai)  
Security Systems Ltd.  
IBP, Changning District  
Shanghai, P.R. China  
400-8310-669