

ChamSys

Inspiring Performance



QuickQ

ChamSys QuickQ Lighting Console

Quick is the keyword for this easy-to-use, intuitive console, perfect for smaller lighting systems and programmers of all skill levels.



Quickly Learn.

There's no need to have any experience with lighting. With a large 9.7-inch touch screen, helpful prompts and videos, and a smart phone-like interface, you can learn the console quickly, design a light show, save it and play it again and again.

Quickly Program.

The console has easy-to-understand buttons and faders, simple colour selection and intensity control tools, a large touch screen with zooming and scrolling at your fingertips, as well as a simple cue/chase system for playback. The QuickQ interface easily leads you through setup, programming and operation of the console.

The console has free downloadable offline programming software available for Mac and Windows that includes the fully rendered MagicVis visualiser. You can program your show using the QuickQ Designer software on your computer, save it onto a flash drive and load it onto the QuickQ console.

Quickly Connect.

The console can automatically detect, patch and configure RDM compliant fixtures such as the CHAUVET Professional Ovation, COLORado and COLORdash ranges.

QuickQ features in-built wifi capabilities enabling remote connection to the free QuickQ Remote app available on iOS, Android and Windows tablets and phones. Begin to plug and play by simply scanning the QR code on the console display.

Quickly See The Quality.

QuickQ is powered by the world renowned ChamSys operating system and cue engine, and comes with the support you've come to expect from an industry leader. The console uses ChamSys' extensive and continuously updated personality library with over 26,000 personalities.

Quickly Progress.

With core ChamSys philosophies at the heart of the product, QuickQ consoles are show compatible with our more advanced MagicQ line of consoles, enabling users to progress freely throughout the ChamSys range.





QuickQ Key Features

Design

- Simple user interface
- Easy navigation
- Large touch screen with easy to understand and intuitive graphical interface
- User prompts through setup, programming and operation



User Interface

- Modeled on smart phone icon interface and gesture support
- Intuitive interface allowing simple control of all fixture attributes
- Supports pinching for zooming and scrolling
- The remote app is identical to that on the console display so that you can easily swap between the two

Playback Faders

- Dedicated Grand Master fader
- Dedicated Cue Stack Control section
- QuickQ 10 has one Cue Stack and two Chase faders
- QuickQ 20 and QuickQ 30 have 10 multi-purpose Cue Stack/Chase faders
- Playbacks compatible with and aid progression towards MagicQ

Fixture Faders

- Fader for Intensity Control
- Flash button
- Fixture, Group and Cue modes
- RGB LED shows current mode/state
- 20 fixture faders on QuickQ 10 and QuickQ 20
- 40 fixture faders on QuickQ 30

Networking

- QuickQ supports output of DMX over network via ArtNet/sACN/Pathport

Colour Control

- A dedicated "colour control area" with Hue and Saturation encoders, and a pair of additional buttons for colour control
- Select from in-built palettes and gel libraries using the touch screen

Console Output Capacity

- No limit on number of fixtures, only by number of universes supported

Ports

- 2 USB ports for loading and saving shows
- Audio input and output
- In-built WIFI port for simple connection of tablets and smart phones

Software Features

QuickQ 10, QuickQ 20 and QuickQ 30

- RDM Autopatch
- HSV Colour Mixing
- Colour Picker
- Built-in FX
- Chase and Cue Support
- Execute Window
- Audio Triggering
- Tap to Time
- Software Upgrade/Downgrade
- Easy Fixture Personality Update



QuickQ 20 and QuickQ 30

- Attribute Encoders
- Multiple Cue Stacks
- MIDI and OSC Triggers
- MIDI Timecode Input
- Pixel based FX

Android and Apple iOS App

Plug and play by taking a picture of the console display QR code to get started.



Offline Software

- Offline editor available for both Windows and Mac
- Easy Upgrades
- Includes MagicVis visualiser
- Replicates entire QuickQ console software excluding output



*Shown with included tablet holder.
*Tablet not included with console.

Visit ChamsysQuickQ.com to download the offline software

QuickQ Compare

	QuickQ 10	QuickQ 20	QuickQ 30
Touch Screen	9.7"	9.7"	9.7"
Universes Supported	1	2	4
DMX Outputs 5-Pin XLR	1	2	3
Fixtures Supported	512	1024	2048
Fixture Faders	20	20	40
Bump Buttons	Y	Y	Y
Dedicated Hue/Saturation Encoders	Y	Y	Y
Attribute Encoders	0	4	4
Master Faders	2 Chase 1 Cue Stack	10 Multiple Function Playbacks	10 Multiple Function Playbacks
Cue Stacks	1	Multiple	Multiple
Dedicated Home Button	Y	Y	Y
USB	2	2	2
Network	Y	Y	Y
External Monitor	1920x1080 HDMI	1920x1080 HDMI	1920x1080 HDMI
Audio In/Out	Y	Y	Y
sACN	Y	Y	Y
ArtNet	Y	Y	Y
Pathport	Y	Y	Y
OSC	N	Y	Y
MIDI	N	Y	Y
MIDI Timecode	N	Y	Y
Fixture Types Supported	LEDs and Dimmers	LEDs, Dimmers and Moving Lights	LEDs, Dimmers and Moving Lights
Size (WDH)	520x350x106	560x350x106	760x350x106
Weight	4.7 kg	5.2 kg	6.1 kg
Product Code	CHAMQUICKQ10	CHAMQUICKQ20	CHAMQUICKQ30

For complete specifications, visit chamsysquickq.com. Specifications are subject to change without notice.

QuickQ Rack

QuickQ Rack is a small rack mountable version of the QuickQ console designed for installations. It features the same operating system as QuickQ series consoles, but is designed to operate as a remote system without physical user control.

Supporting four universes, QuickQ Rack is ideal for installations, control rooms and bars. The unit can be used as a desktop box or rack mounted with the included rack ears.

Features

- Ten Scene Buttons
- Four Universes
- Two RDM 5-pin DMX Outputs
- Inbuilt Wi-Fi for programming and remote control
- Four 10 scene ports for connection of up to forty 10 Scene wall plates
- Four remote input ports
- Same software as QuickQ Consoles
- Simple Hot-Takeover mode allowing external console to take control of connected fixtures



Shown with included rack ears.

QuickQ Training Library

There's no need to have any prior experience with lighting to use QuickQ. Explore the ChamSys QuickQ Training Library at: <http://bit.ly/QuickQTraining> to access informative prompts and videos that will help you start programming in no time!



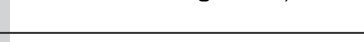
1 QuickQ: Console Layout
ChamSys



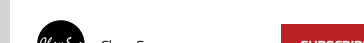
2 QuickQ: Starting new Shows and Patching
ChamSys



3 QuickQ: Auto-Patching with RDM
ChamSys



4 QuickQ: Recording
ChamSys



5 QuickQ: How to Record a snapshot
ChamSys



6 QuickQ: Editing Cues, cue stacks, and chases
ChamSys



7 QuickQ: Editing Cues, cue stacks, and chases
ChamSys



8 QuickQ: Editing Cues, cue stacks, and chases
ChamSys



9 QuickQ: Editing Cues, cue stacks, and chases
ChamSys



10 QuickQ: Editing Cues, cue stacks, and chases
ChamSys



ChamSys

ChamSys U.S.

5200 NW 108 Avenue
Sunrise, FL 33351, USA

ChamSys Ltd - U.K.

Brooklands Courtyard,
First Avenue,
Southampton,
SO15 0LJ
United Kingdom

sales@chamsys.co.uk
Tel: +44 (0) 2380 238666

Find out more about QuickQ consoles at:
ChamSysQuickQ.com

