

Par Z Move



Light Efficiency:



Light Quality:



Color Temperature:



Output: 5053 lm

Peak: 235188 cd

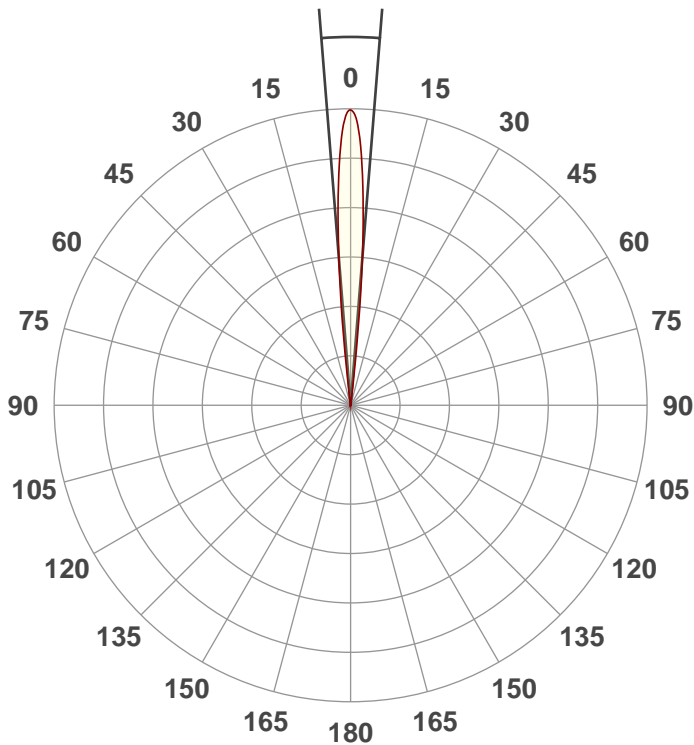
Power: 232.9 W

PF: 0.98



Beam Angle

9.1°



Test:

Zoom In

Date:

2/19/2019

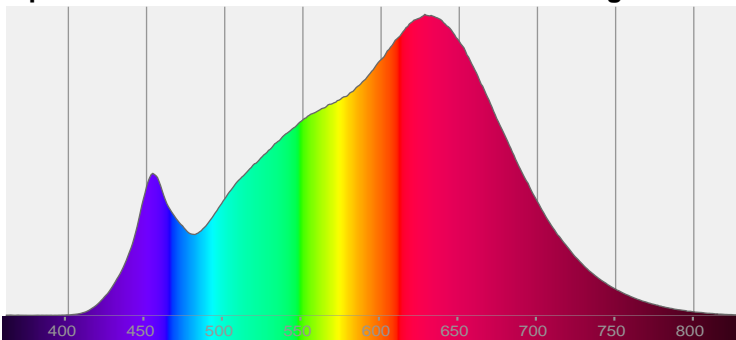
Note:



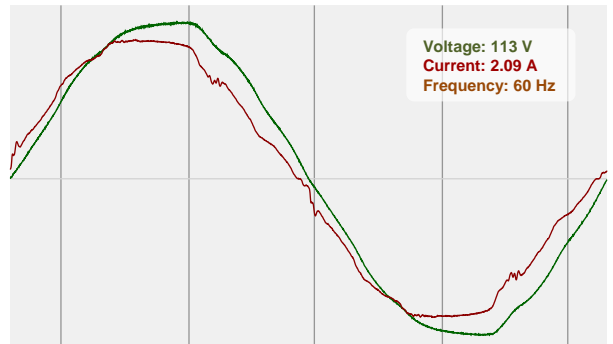
CIE 1931
x: 0.430
y: 0.399

Spectra

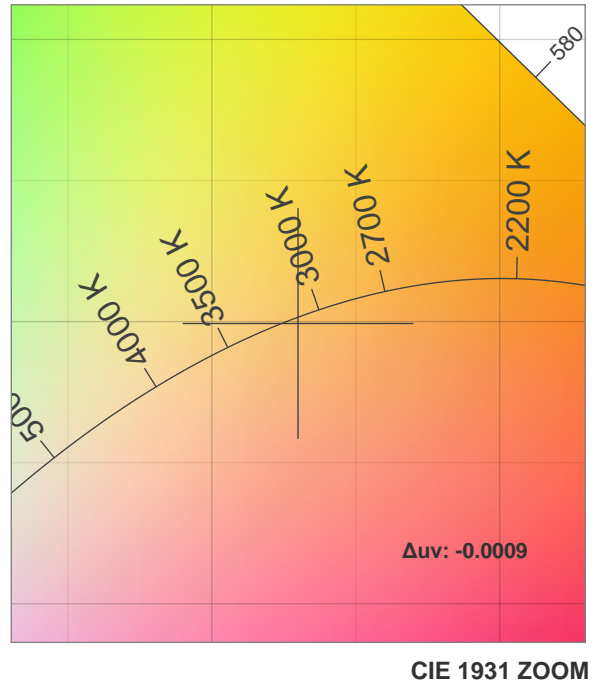
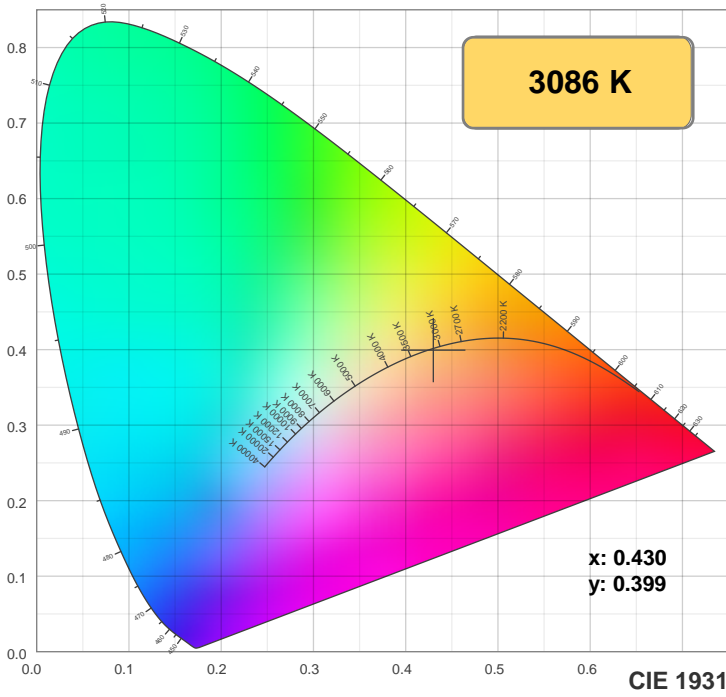
Dominant Wavelength: 584nm



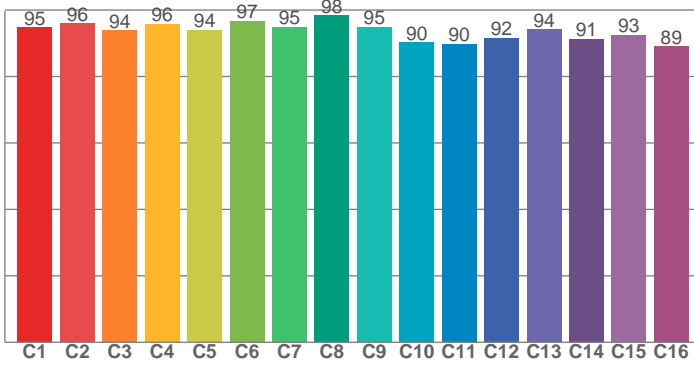
Power



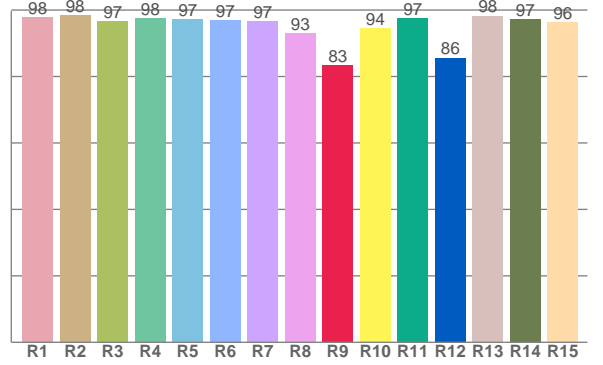
Color Details



TM30: 93.7



CRI: 96.8 (R1-R8)



CRI R values, only R1-R8 are used to calculate final CRI value

R1	R2	R3	R4	R5	R6	R7	R8	R9	R10	R11	R12	R13	R14	R15
97.9	98.4	96.6	97.5	97.2	97.0	96.6	92.9	83.3	94.5	97.5	85.6	98.2	97.2	96.3

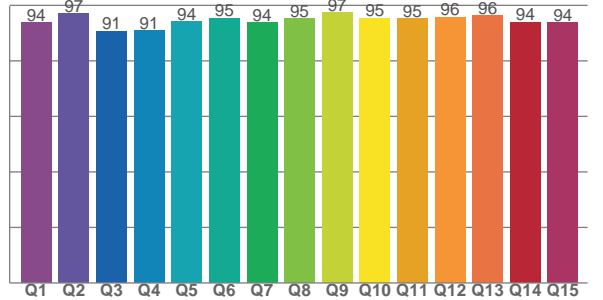
TM30 C values, 16 binned values out of total of 99 C values

C1	C2	C3	C4	C5	C6	C7	C8	C9	C10	C11	C12	C13	C14	C15	C16
94.7	96.0	93.9	95.8	94.0	96.7	94.9	98.4	94.9	90.3	89.8	91.6	94.2	91.4	92.6	89.1

CQS Q values

Q1	Q2	Q3	Q4	Q5	Q6	Q7	Q8	Q9	Q10	Q11	Q12	Q13	Q14	Q15
93.8	97.0	90.8	90.9	94.1	95.3	93.7	95.3	97.4	95.3	95.2	95.7	96.2	93.9	93.8

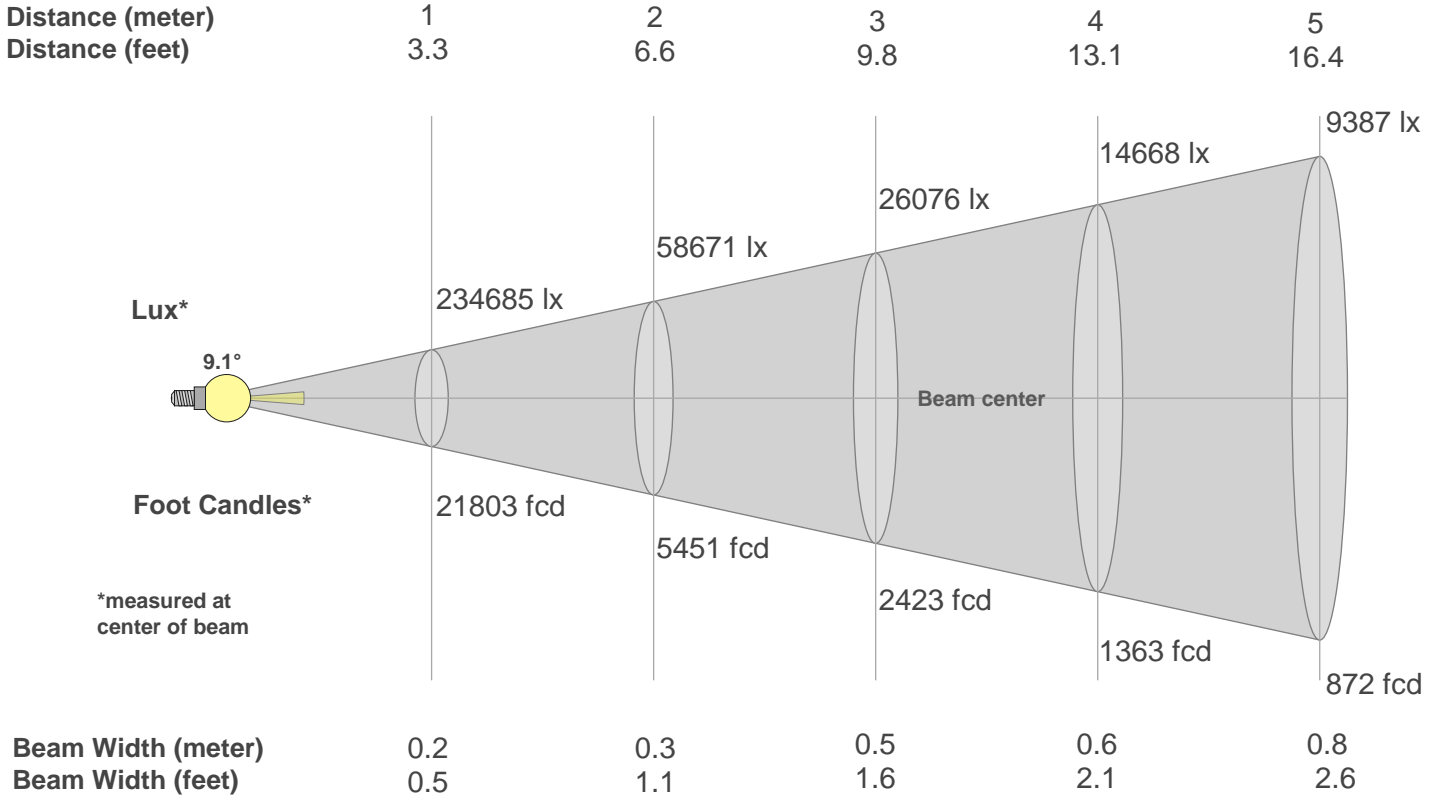
CQS: 94.2



Color Parameters

Color Temperature	Color Rendering Index	Red Component	Color Fidelity	Color Gamut	Color Quality Scale	Color Coordinate CIE 1931	Color Coordinate CIE 1931	Color Coordinate	Color Coordinate	Color Deviation from Black Body
CCT	CRI	CRI R9	TM30 Rf	TM30 Rg	CQS	x	y	u	v	Δuv
3086 K	96.8	83.3	93.7	100.5	94.2	0.430	0.399	0.248	0.346	-0.0009

Beam Details



Beam Intensities from 1-20m

m	1	2	3	4	5	6	7	8	9	10	11	12	13	14	15	16	17	18	19	20
ft	3.3	6.6	9.8	13.1	16.4	19.7	23	26.2	29.5	32.8	36.1	39.4	42.7	45.9	49.2	52.5	55.8	59.1	62.3	65.6
lx	234685	58671	26076	14668	9387	6519	4789	3667	2897	2347	1940	1630	1389	1197	1043	917	812	724	650	587
fcd	21802.9	5450.7	2422.5	1362.7	872.1	605.6	445	340.7	269.2	218	180.2	151.4	129	111.2	96.9	85.2	75.4	67.3	60.4	54.5

Intensities in 0° C-plane

0°	1°	2°	3°	4°	5°	6°	7°	8°	9°	10°	11°	12°	13°	14°	15°	16°	17°	18°	19°	
235K	229K	211K	181K	142K	97K	50K	14K	1K	0K	0K	0K	0K	0K	0K	0K	0K	0K	0K	0K	0K
100%	98%	90%	77%	61%	41%	21%	6%	1%	0%	0%	0%	0%	0%	0%	0%	0%	0%	0%	0%	0%

Intensities in 90° C-plane

0°	1°	2°	3°	4°	5°	6°	7°	8°	9°	10°	11°	12°	13°	14°	15°	16°	17°	18°	19°	
235K	229K	211K	181K	142K	97K	50K	14K	1K	0K	0K	0K	0K	0K	0K	0K	0K	0K	0K	0K	0K
100%	98%	90%	77%	61%	41%	21%	6%	1%	0%	0%	0%	0%	0%	0%	0%	0%	0%	0%	0%	0%

Intensities in 180° C-plane

0°	1°	2°	3°	4°	5°	6°	7°	8°	9°	10°	11°	12°	13°	14°	15°	16°	17°	18°	19°	
235K	229K	212K	182K	143K	97K	45K	9K	1K	0K	0K	0K	0K	0K	0K	0K	0K	0K	0K	0K	0K
100%	98%	90%	77%	61%	41%	19%	4%	1%	0%	0%	0%	0%	0%	0%	0%	0%	0%	0%	0%	0%

Intensities in 270° C-plane

0°	1°	2°	3°	4°	5°	6°	7°	8°	9°	10°	11°	12°	13°	14°	15°	16°	17°	18°	19°	
235K	229K	212K	182K	143K	97K	45K	9K	1K	0K	0K	0K	0K	0K	0K	0K	0K	0K	0K	0K	0K
100%	98%	90%	77%	61%	41%	19%	4%	1%	0%	0%	0%	0%	0%	0%	0%	0%	0%	0%	0%	0%

Beam Angle 50%	Field Angle 10%	Cutoff Angle 2,5%	Intensity Ratio in 120° Cone	Intensity Ratio in 90° Cone
9.1°	13.1°	14.5°	100.0%	100.0%