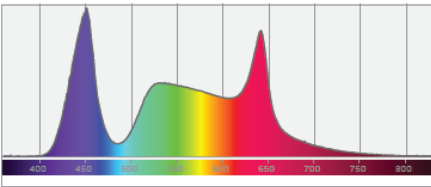
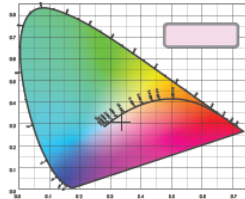


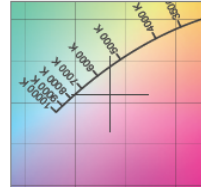
**Spectral distribution**



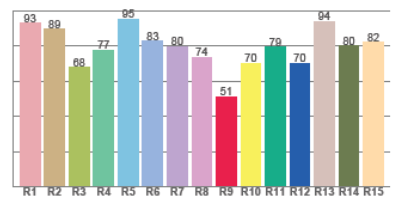
**Color coordinates**



**Zoom color point**



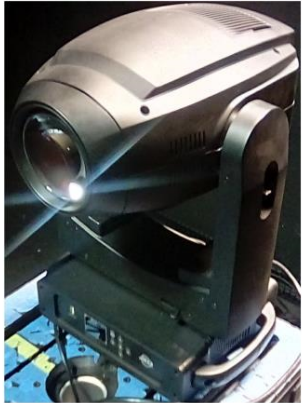
**CRI R values**



# Photometric Test Report

\*Due to additional product enhancements, an updated version of this report may be available online. Please check [www.adj.com](http://www.adj.com) for the latest revision/update of this report.

# Focus Spot 6Z



Light Efficiency:



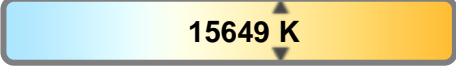
Output: 10549 lm

Light Quality:



Peak: 61842 cd

Color Temperature:

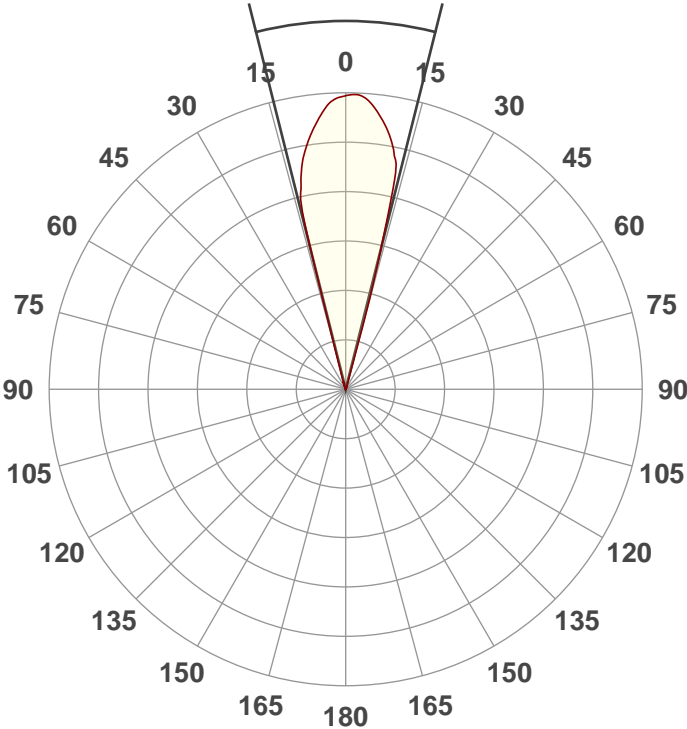


Power: 420 W

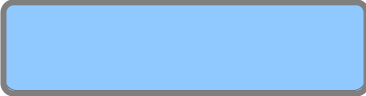
PF: 1.0

Beam Angle

28.2°



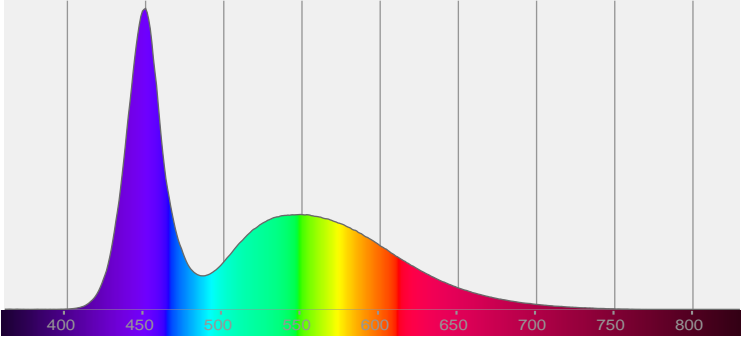
Test:  
Zoom Out  
Date:  
12/5/2019  
Note:



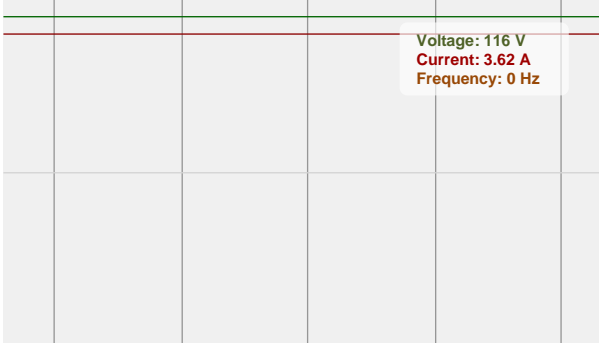
CIE 1931  
x: 0.266  
y: 0.261

Spectra

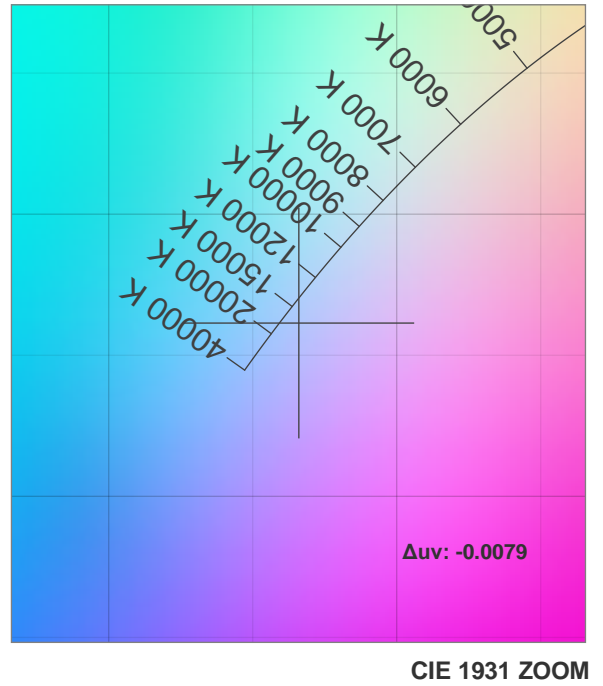
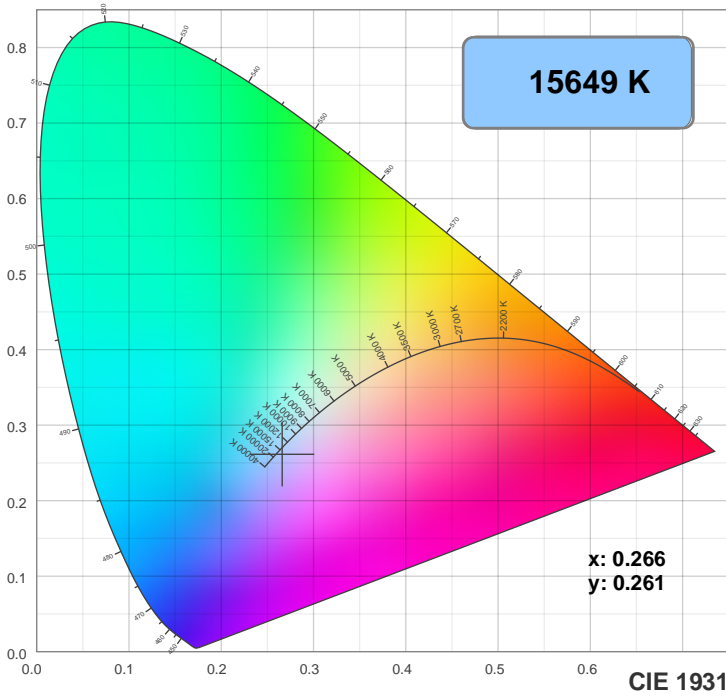
Dominant Wavelength: 470nm



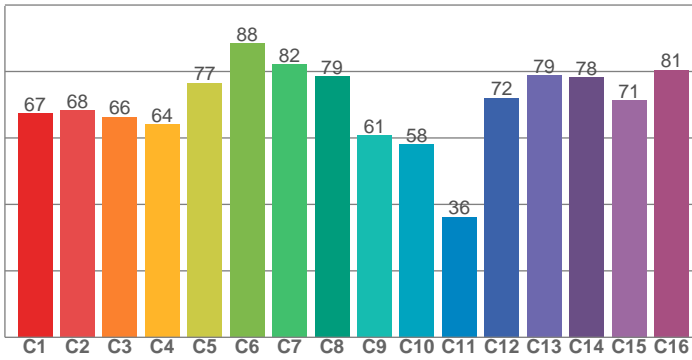
Power



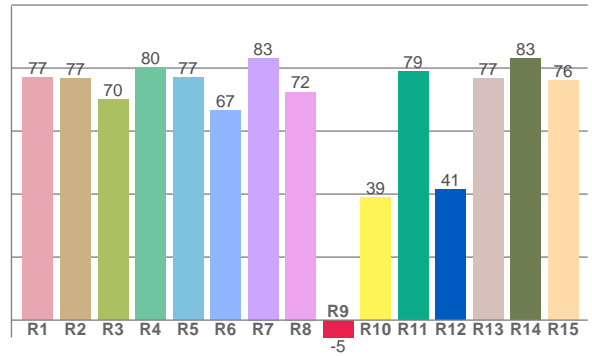
# Color Details



**TM30: 71.4**



**CRI: 75.4 (R1-R8)**



**CRI R values, only R1-R8 are used to calculate final CRI value**

R1	R2	R3	R4	R5	R6	R7	R8	R9	R10	R11	R12	R13	R14	R15
76.9	76.8	69.9	80.3	77.0	66.5	83.2	72.4	-5.5	38.8	78.8	41.3	76.7	83.1	76.0

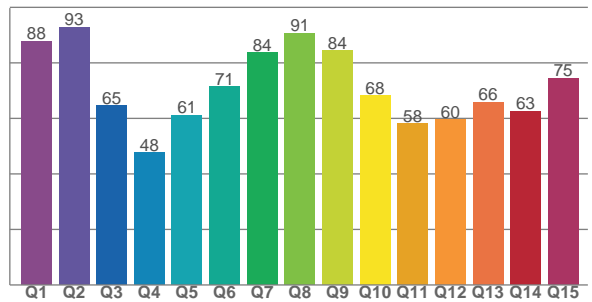
**TM30 C values, 16 binned values out of total of 99 C values**

C1	C2	C3	C4	C5	C6	C7	C8	C9	C10	C11	C12	C13	C14	C15	C16
67.4	68.3	66.3	64.0	76.5	88.4	82.1	78.5	60.7	58.1	36.2	72.0	78.9	78.2	71.4	80.5

**CQS Q values**

Q1	Q2	Q3	Q4	Q5	Q6	Q7	Q8	Q9	Q10	Q11	Q12	Q13	Q14	Q15
87.8	92.8	64.6	47.7	61.2	71.4	83.7	90.7	84.4	68.2	58.2	59.6	65.8	62.6	74.6

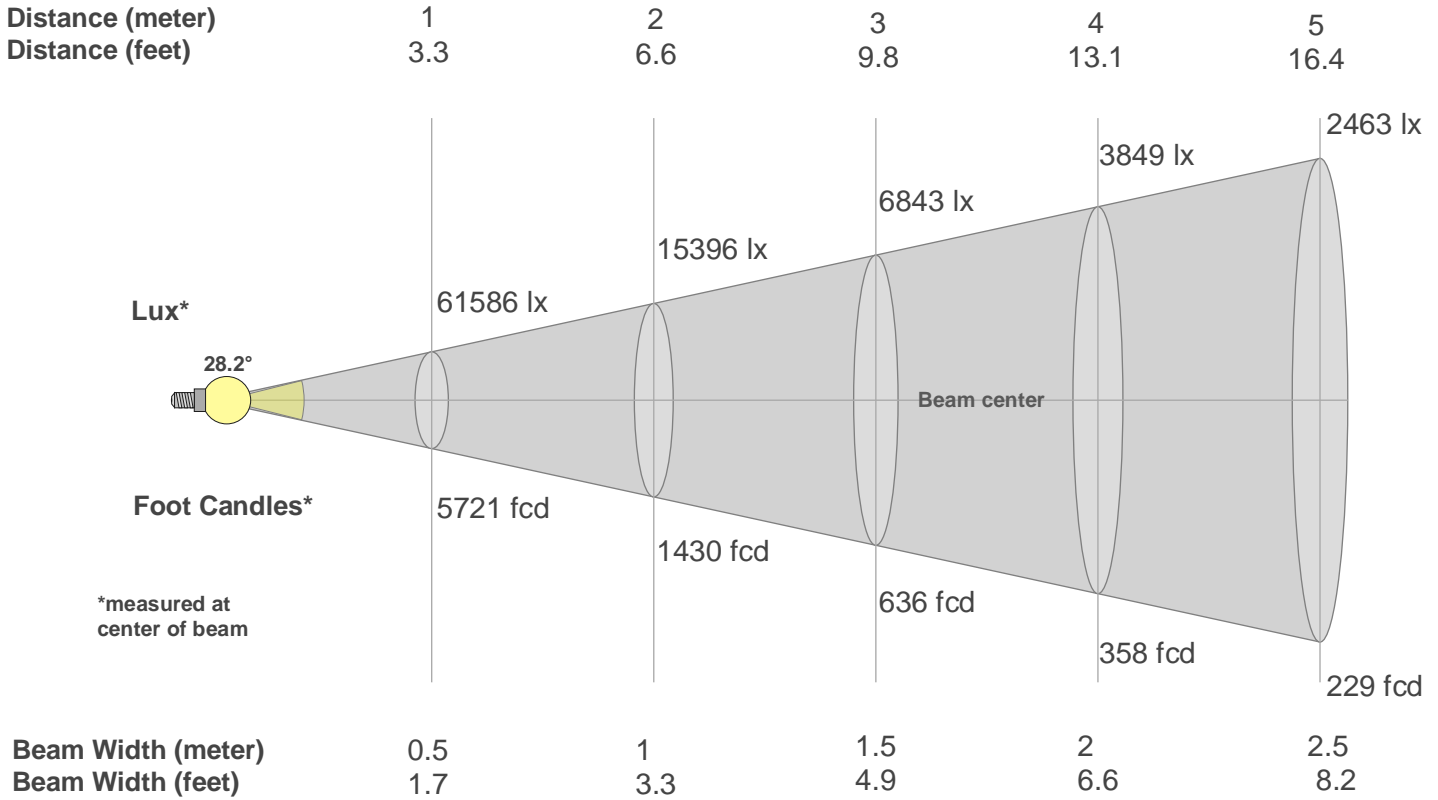
**CQS: 68.7**



## Color Parameters

Color Temperature	Color Rendering Index	Red Component	Color Fidelity	Color Gamut	Color Quality Scale	Color Coordinate CIE 1931	Color Coordinate CIE 1931	Color Coordinate	Color Coordinate	Color Deviation from Black Body
CCT	CRI	CRI R9	TM30 Rf	TM30 Rg	CQS	x	y	u	v	$\Delta uv$
15649 K	75.4	-5.5	71.4	92.9	68.7	0.266	0.261	0.190	0.280	-0.0079

# Beam Details



## Beam Intensities from 1-20m

m	1	2	3	4	5	6	7	8	9	10	11	12	13	14	15	16	17	18	19	20
ft	3.3	6.6	9.8	13.1	16.4	19.7	23	26.2	29.5	32.8	36.1	39.4	42.7	45.9	49.2	52.5	55.8	59.1	62.3	65.6
lx	61586	15396	6843	3849	2463	1711	1257	962	760	616	509	428	364	314	274	241	213	190	171	154
fcd	5721.5	1430.4	635.7	357.6	228.9	158.9	116.8	89.4	70.6	57.2	47.3	39.7	33.9	29.2	25.4	22.3	19.8	17.7	15.8	14.3

## Intensities in 0° C-plane

0°	1°	2°	3°	4°	5°	6°	7°	8°	9°	10°	11°	12°	13°	14°	15°	16°	17°	18°	19°
61.6K	61.3K	61.0K	60.3K	59.3K	58.0K	56.6K	55.1K	53.6K	51.9K	50.0K	47.9K	44.9K	40.4K	32.7K	11.8K	3.4K	1.5K	0.7K	0.2K
100%	100%	99%	98%	96%	94%	92%	90%	87%	84%	81%	78%	73%	66%	53%	19%	5%	2%	1%	0%

## Intensities in 90° C-plane

0°	1°	2°	3°	4°	5°	6°	7°	8°	9°	10°	11°	12°	13°	14°	15°	16°	17°	18°	19°
61.6K	61.3K	61.0K	60.3K	59.3K	58.0K	56.6K	55.1K	53.6K	51.9K	50.0K	47.9K	44.9K	40.4K	32.7K	11.8K	3.4K	1.5K	0.7K	0.2K
100%	100%	99%	98%	96%	94%	92%	90%	87%	84%	81%	78%	73%	66%	53%	19%	5%	2%	1%	0%

## Intensities in 180° C-plane

0°	1°	2°	3°	4°	5°	6°	7°	8°	9°	10°	11°	12°	13°	14°	15°	16°	17°	18°	19°
61.6K	61.8K	61.8K	61.6K	61.1K	60.2K	59.2K	58.0K	56.7K	55.3K	53.7K	51.7K	49.1K	45.6K	32.2K	17.9K	4.7K	1.5K	0.4K	0.1K
100%	100%	100%	100%	99%	98%	96%	94%	92%	90%	87%	84%	80%	74%	52%	29%	8%	2%	1%	0%

## Intensities in 270° C-plane

0°	1°	2°	3°	4°	5°	6°	7°	8°	9°	10°	11°	12°	13°	14°	15°	16°	17°	18°	19°
61.6K	61.8K	61.8K	61.6K	61.1K	60.2K	59.2K	58.0K	56.7K	55.3K	53.7K	51.7K	49.1K	45.6K	32.2K	17.9K	4.7K	1.5K	0.4K	0.1K
100%	100%	100%	100%	99%	98%	96%	94%	92%	90%	87%	84%	80%	74%	52%	29%	8%	2%	1%	0%

Beam Angle 50%	Field Angle 10%	Cutoff Angle 2,5%	Intensity Ratio in 120° Cone	Intensity Ratio in 90° Cone
28.2°	31.2°	33.9°	100.0%	99.9%